

## ACALYPHA CAPERONIOIDES

Plateau and montane grassland; *Brachystegia* woodland; sometimes on dambo margins; particularly noticeable after grass fires; 915-2230 m alt.

Somewhat variable in leaf characters.

S. Africa (in this area the species shows intermediates with *A. peduncularis*, *A. punctata* and *A. wilmsii*).

**A. ceraceopunctata** Pax

Shrub to 1,5 m tall with angular branches; fruits hidden by the enlarged pale bracts, 3-lobed and dotted with yellow scale-like glands.

Sandy wooded savanna or fringing forest; swampy spiny forests; 300 m alt.

**A. chirindica** S. Moore

Deciduous, much-branched, straggling or scrambling, slender-stemmed shrub or tree to 5 m tall; branches over-arching and pendant, terete; young branchlets twiggy.

Mixed evergreen rain-forest; dense evergreen riverine forest; in gully and escarpment ravine forest; in closed canopy *Brachystegia* woodlands and dense kopje vegetation; in understorey thicket of dry deciduous forest on Kalahari Sand (mutemwa); termite mounds and pemba thicket; rocky hills; (275-) 500-1675 m alt.

In Malawi, this species hybridizes with *A. ornata* (= *A. x malawiensis*).

**A. ciliata** Forssk.; Kew Bull. 44: 441, 1989.

Erect, simple or slightly branched annual herb 15-50(-100) cm tall; stems grooved.

Disturbed areas in deciduous woodland and riverine forest; often in shade; sometimes weed of cultivation; hydromorphic hollow; on sand; alluvial soils; pan margins in floodplain mopane; lakeshore thicket vegetation; wooded grassland; deciduous and coastal bushland; often in rocky places; 0-1700 m alt.

Caprivi Strip, Namibia, Botswana; tropical Arabia, Pakistan, India, Sri Lanka.

See under *A. fimbriata* and *A. bussei*.

**A. clutioides** Radcl.-Smith; Bull. Jard. Bot. Natl. Belgique 65: 131, 1996.

Densely caespitose perennial herb or suffrutex to 50 cm tall, from a stout woody rootstock; stems many red-brown, simple, or with 1-2 ramifications near the base, densely leafy.

Watershed grassland plains, on Kalahari sand; sandy dambos; moist deep black soil; *Uapaca* woodland; 1200-1490 m alt. Angola? (East Moxico).

Near *A. dikuluwensis*.

**A. crenata** Hochst. ex A. Rich.

syn.: *A. abortiva* Hochst. ex Baill.; *A. indica* L. var. *abortiva* (Hochst. ex Baill.) Müll. Arg.; *A. indica* L. "lusus" *abortiva* (Baill.) Müll. Arg.; *Ricinocarpus vahlianus* (Oliv.) Kuntze; *Acalypha vahliana* Oliv., non Müll. Arg.

Similar to *A. indica* but rarely exceeding 40 cm height and leaves more uniformly distributed along the stem; very similar to *A. segetalis* in habit, but the leaves are more rounded at the base and the muricate allomorphic female flowers are usually

## ACALYPHA CRENATA

subsessile and may be terminal or lateral on the inflorescence, and are glabrous except for a single white hair at the apex of each tubercle.

Weed of cultivation; mopane woodland on damp black clay soils; moist grassland; sandy river banks; often on waste ground; sandy-clayey soils; rice-fields; 510-2000 m alt.

Cape Verde Islands; Botswana.

See under *A. lanceolata*.

**A. deltoidea** Robyns & Lawalrée

Erect shrub, ±1 m tall; base unknown; branches rounded, elongated, 3-4 mm Ø, simple, reddish with lines of white lenticels at the base, internode to 3 cm long.

Savanna; 1100-1200 m alt.

**A. dikuluwensis** P. A. Duvign. & Dewit

syn.: *A. cupricola* Robyns, nom. nud.

Very similar to *A. clutioides*, but distinguished by: stems not more than 25 cm tall, more densely pilose, less densely leafy, lower leaves more broadly ovate to almost suborbicular; fruit unknown.

Polycuprophyte on substrate where the copper content is above 2,500 ppm., and it can tolerate concentrations of up to 50,000 ppm. In Katanga observed on 10 outcrops (Geo-Eco-Trop. 23: 42, 1999); rocky grassland with *Xerophyta*; colluvial meadow with *Ascolepis metallorum*, at base of slope; watershed grassland, on termite mounds in open at edge of boggy dambos.

**A. dumetorum** Müll. Arg., non Pax (= *A. ambigua*).

syn.: *Ricinocarpus dumetorum* (Müll. Arg.) Kuntze

Shrub 0,5-2 m tall with ramose or subsimple stems.

Forest understorey or clearing; forest edges; thickets; rocks; 1760 m alt.

**A. echinus** Pax & K. Hoffm.

Many-stemmed straggling shrub to 4 m tall, sometimes developing short shoots; older branches sometimes spinescent.

Riverine forest; 60-300 m alt.

*A. aff. echinus* is reported from Rwanda (Runyinya 949).

**A. engleri** Pax

Much-branched shrub to 3 m tall; short shoots absent.

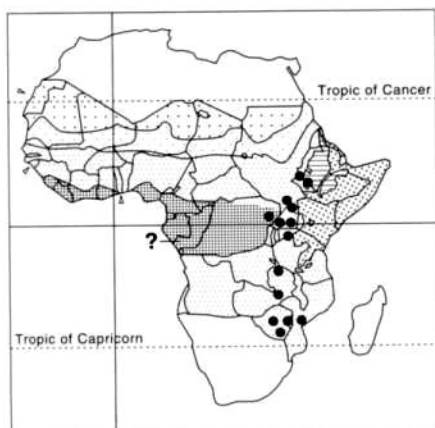
Forest undergrowth, edges and associated bushland; (100)-400-500 m alt.

*A. sigensis* Pax & K. Hoffm. is probably a synonym (type destroyed: Braun 1503).

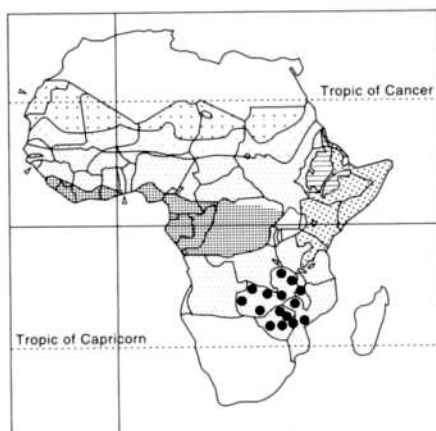
**A. eriophylla** Hutch.

Stems arising from a woody rhizome, erect, simple, to 30 cm tall, deeply channelled or sulcate; monoecious. – Very remarkable by the large trilobed stipules, which enclose the female flower at the base of each male axis.

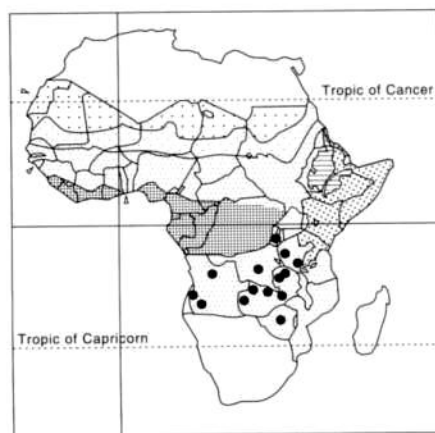
Edge of forest with low timber trees, on sandy soil; 1200 m alt. Only known from two collections made in 1899 and 1964.



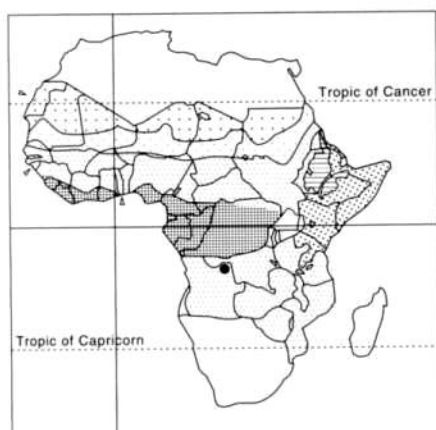
*Acalypha acrogyna*



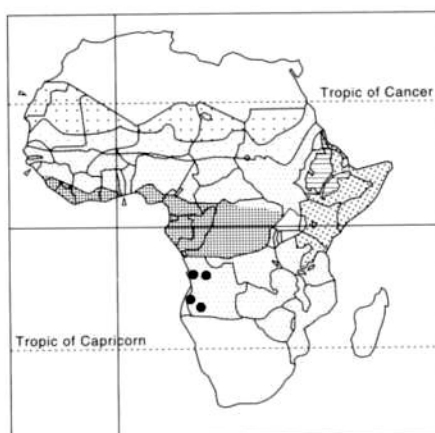
*Acalypha allenii*



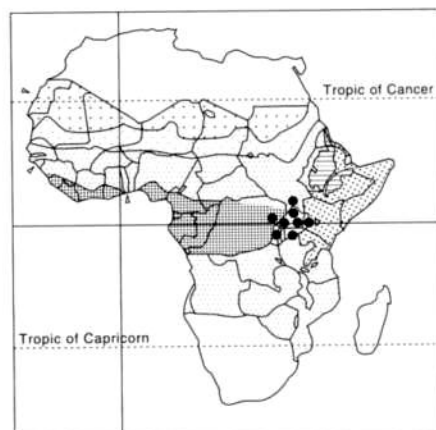
*Acalypha ambigua*



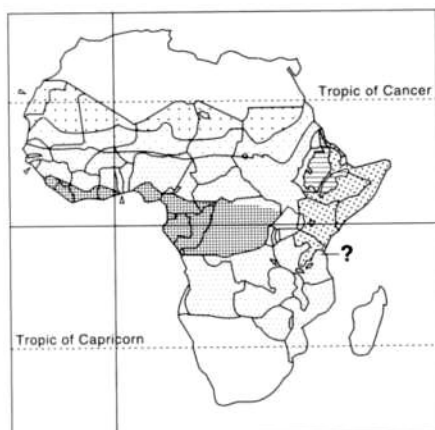
*Acalypha angustissima*



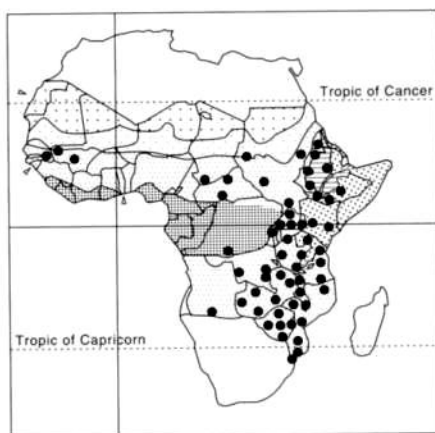
*Acalypha benguelensis*



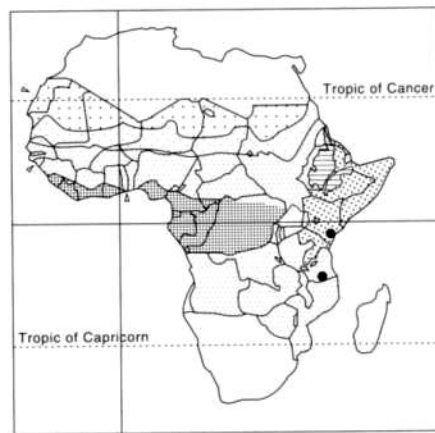
*Acalypha bipartita*



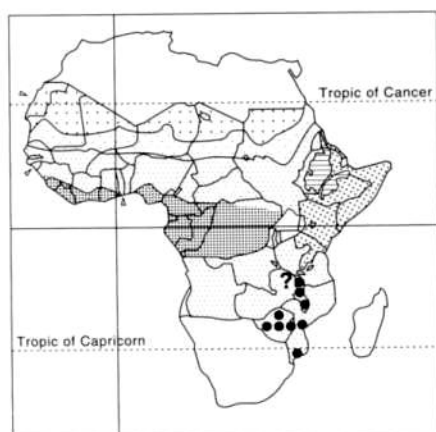
*Acalypha boiviniana*



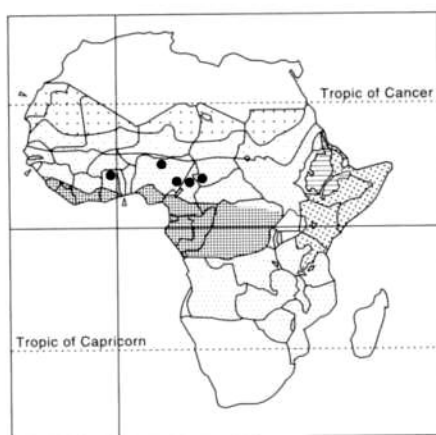
*Acalypha brachiata*



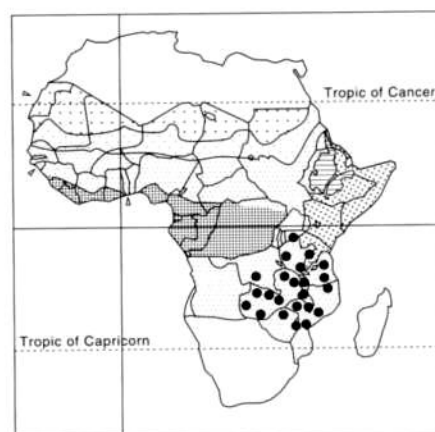
*Acalypha bussei*



*Acalypha caperonioides*



*Acalypha ceraceopunctata*



*Acalypha chirindica*