



Figure 12.20A.—*Hypoxis nivea* (Singh 888).





Figure 12.20B.—*Hypoxis nivea*.





*Hypoxis obliqua* Jacq.  
Det./Conf. Y. Singh 2006/01/13

**NATAL HERBARIUM (NH)** NH 129127.0

32° 14' 52" S 27° 16' 40" E [3227AB]	Grid ref.	Region	Eastern Cape, South Africa
Singh, Y. 512	Legit & no.	Date	27/11/1999
		Alt.	1200 m

*Hypoxis zeyheri* Baker

Stutterheim. Farm Undula. Along secondary road from Cathcart to Toise via Bitterne. c. 850m before turnoff to Stutterheim.

Point data correct to 0-10m.  
Solitary cormous erect herb. Corm yellow within. Tepals yellow. Intermingled with Y. Singh 511 and Y. Singh 513. Plant height: 6cm. Vegetation type: rocky grassland. Substrate: soil. Moisture regime: well-drained. Lithology: dolerite. Exposure: full sun. Aspect: North-East. Slope: steep. Local abundance: frequent, often many plants in a clump. Altitude: c. 1200m.

Det. Y. Singh Genspec no. 1230000 55

Figure 12.21A.—*Hypoxis obliqua* (Singh 512).





Figure 12.21B, C.—*Hypoxis obliqua*.





Figure 12.22A.—*Hypoxis obtusa* (Singh 517).



Figure 12.22B.—*Hypoxis obtusa*.





Figure 12.23A.—*Hypoxis parvifolia* (Singh 470).



Figure 12.23B.—*Hypoxis parvifolia*.





Figure 12.24A.—*Hypoxis parvula* var. *albiflora* (Williams 1185).



Figure 12.25A.—*Hypoxis parvula* var. *parvula* (Singh 545).





Figure 12.25B.—*Hypoxis parvula* var. *parvula*.

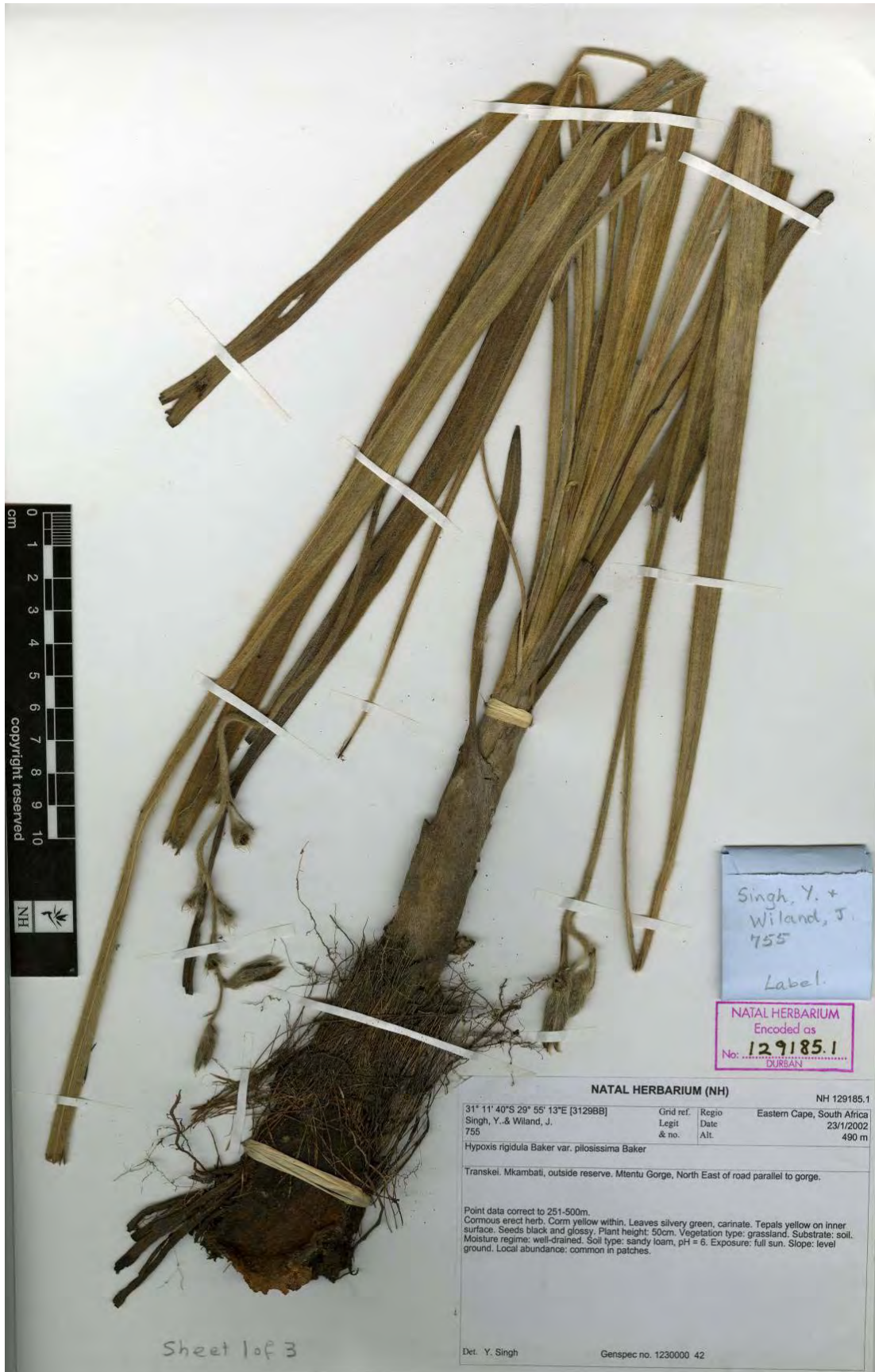


Figure 12.26A.—*Hypoxis rigidula* var. *pilosissima* (Singh & Wiland 755).





Figure 12.26B.—*Hypoxis rigidula* var. *pilosissima*.





Figure 12.27A.—*Hypoxis rigidula* var. *rigidula* (Singh & Wiland 660).





Figure 12.27B.—*Hypoxis rigidula* var. *rigidula*.





0096109 == 3325CA  
SCHARF, H.T.  
01644 == 1074



NATIONAL HERBARIUM  
NATIONALE HERBAARU

3325 CA	Grid Ref./ Ruitverw.	Regio	Cape
Port Elizabeth			
H.T.SCHARF	Legit & No.	Anno	18.12.74
1074		Alt.	1700'

*Hypoxis rooperii* S. Moore

Watered Ravine West of Nounek; Groendal  
Wilderness Area; Uitenhage district; Kwa  
Zunga (Upper Zwartkops) catchmt. basin.  
Riverine Ravine; S.slope 80°; Fynbos/Grass-  
land; Fair amount of organic material on  
this mesoclone.  
Herb; Leaves- hairy; Flower-yellow.  
Not prominent in the landscape.

Det. Ref./Verw.

GPS-(F)-8

LTD 1506

*Hypoxis sobolifera* Jacq. var. *pannosa* (Baker) Nel

Det./Conf. Y. Singh 20.06/01/13

92021/249

1230-000-0434

Figure 12.28A.—*Hypoxis sobolifera* var. *pannosa* (Scharf 1074).





Figure 12.28B.—*Hypoxis sobolifera* var. *pannosa*.





NATAL HERBARIUM (NH) NH 129355.0

33° 24'S 26° 23'E [3326AD]	Grid ref.	Region	Eastern Cape, South Africa
Singh, Y. 622	Legit & no.	Date	24/5/2000
		Alt.	400 m

*Hypoxis villosa* L.f.

Grahamstown. Along N2 between Grahamstown and Port Elizabeth in vicinity of Lockerville, 20km from Grahamstown, 300m after turnoff to Aliceedale.

Point data correct to 501-1000m.  
Cormous erect, clump forming herb. Flowers yellow, lower surface of tepals with red midrib. Plant height: 20cm. Vegetation type: rocky grassland. Substrate: soli. Moisture regime: well-drained. Exposure: full sun. Slope: level ground. Local abundance: abundant. Altitude: c. 400m.

Det. Y. Singh Genspec no. 1230000 51

Figure 12.29A—*Hypoxis sobolifera* var. *sobolifera* (Singh 622).





Figure 12.29B.—*Hypoxis sobolifera* var. *sobolifera*.





Figure 12.30A.—*Hypoxis stellipilis*. A. Habit x 0.55; B, Leaf section x 3; C, Leaf hairs x 30; D, Half flower x 4.5; E, Outer tepal, abaxial view x 4; F, Inner tepal, abaxial view x 4; G, Tepal hair x 14; H, Fruit x 1, I, Seed, side view x 30; J, Seed, front view x 30. A–G, *Menne s.n.*; H–J, *Deacon s.n.* (GRA). Artist: A.J. Beaumont.





Figure 12.30B.—*Hypoxis stellipilis* (Singh 621).





Figure 12.30C.—*Hypoxis stellipilis*.





Figure 12.31.—*Hypoxis tetramera* (Hilliard & Burt 16798).



Figure 12.32.—*Hypoxis villosa* (Singh 627).





Figure 12.33.—*Hypoxis zeyheri* (Singh 534).



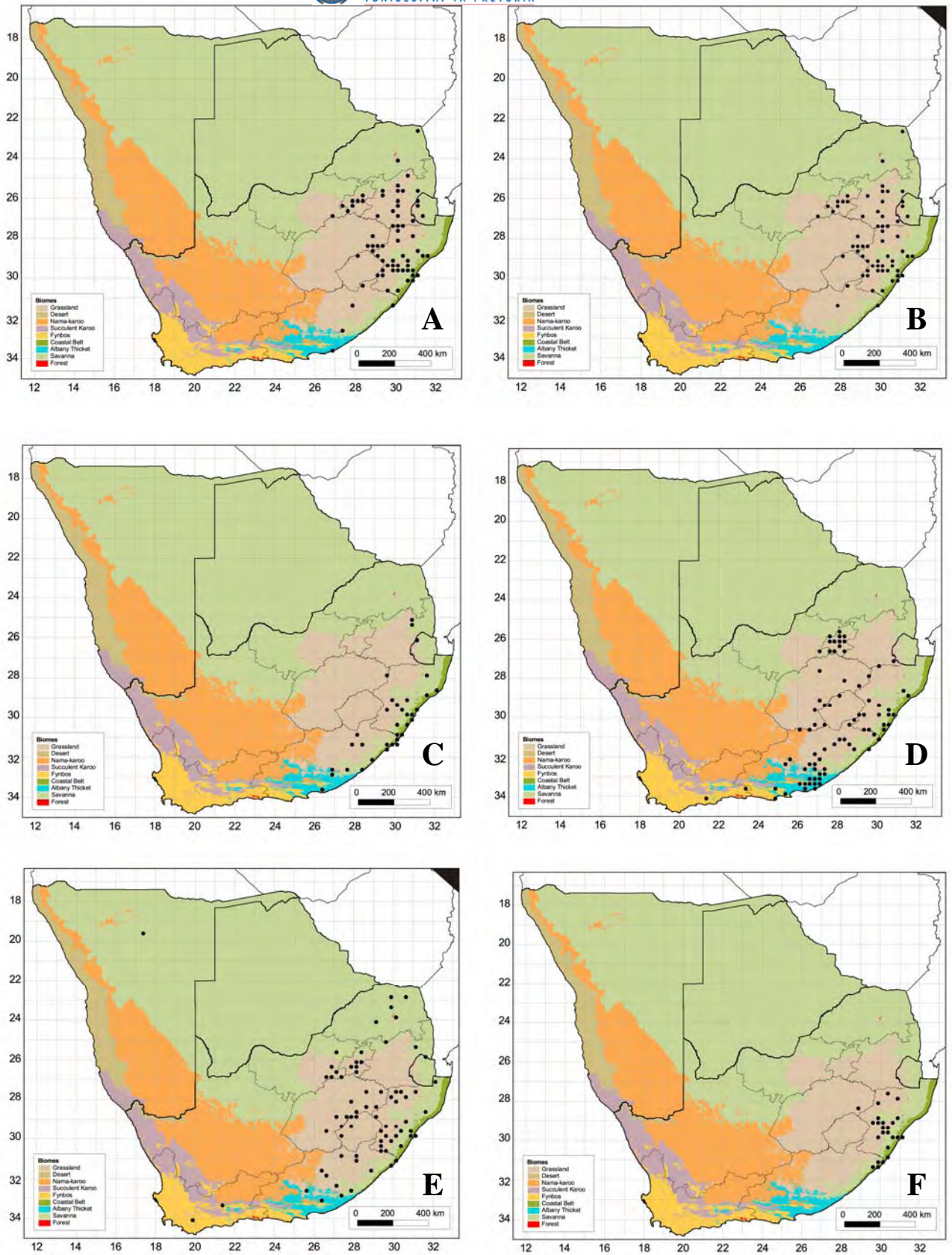


Figure 12.34.—Known distribution of *Hypoxis*. A, *H. acuminata*; B, *H. angustifolia* var. *angustifolia*; C, *H. angustifolia* var. *buchananii*; D, *H. argentea* var. *argentea*; E, *H. argentea* var. *sericea*; F, *H. colchicifolia*. Arrow indicates distribution into Tropical Africa.



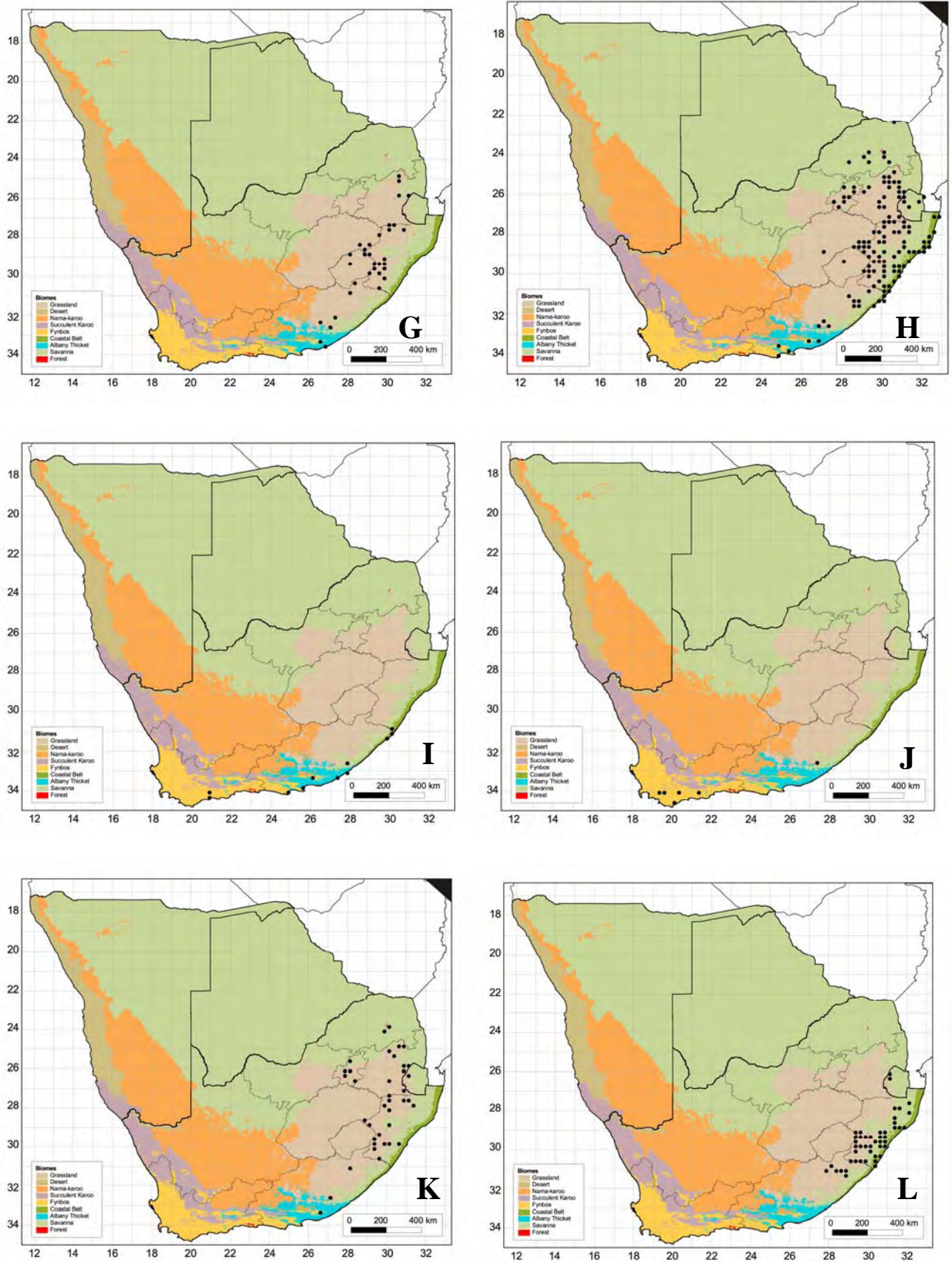


Figure 12.34 cont.—Known distribution of *Hypoxys*. G, *H. costata*; H, *H. filiformis*; I, *H. flanaganii*; J, *H. floccosa*; K, *H. galpinii*; L, *H. gerrardii*. Arrow indicates distribution into Tropical Africa.



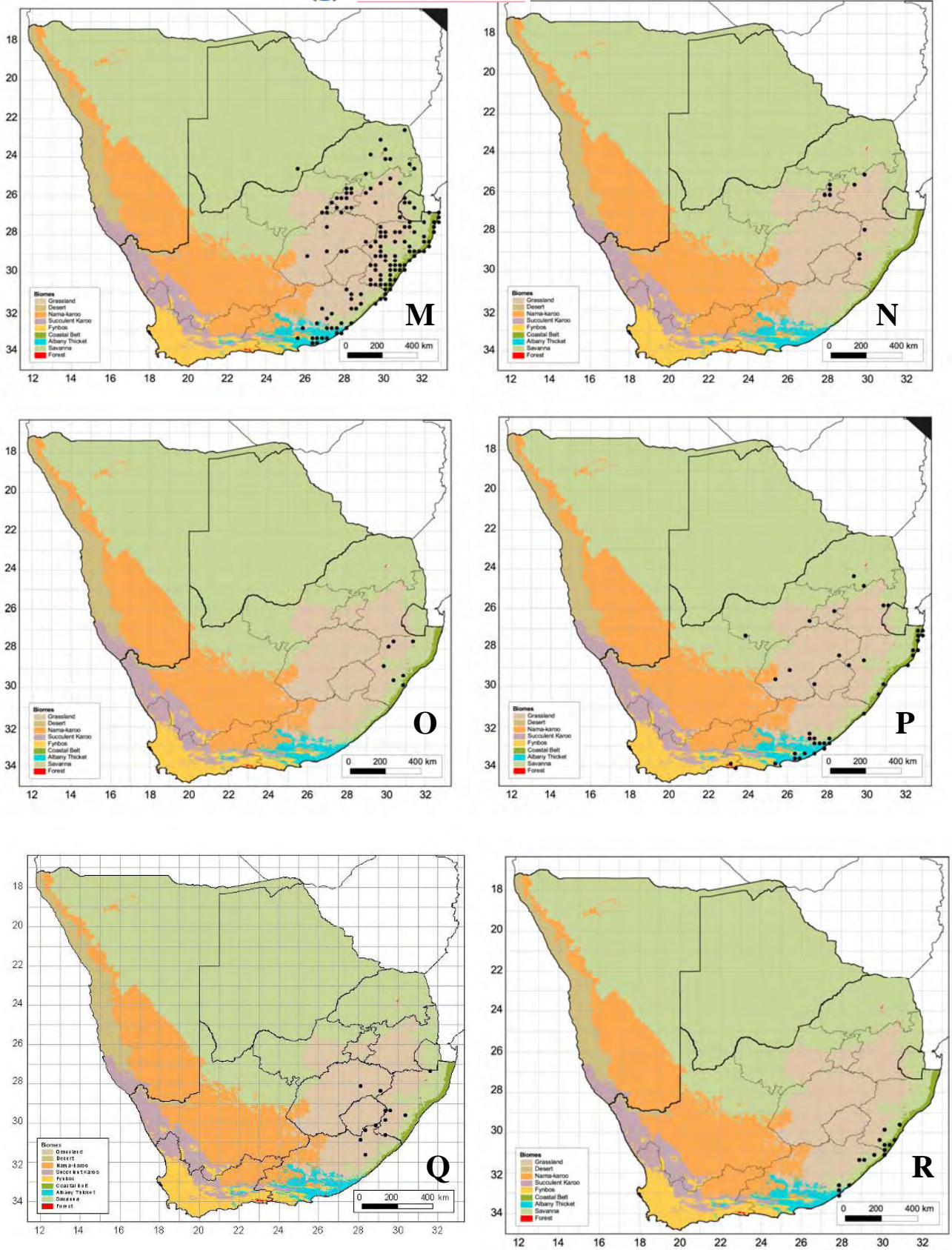


Figure 12.34 cont.—Known distribution of *Hypoxias*. M, *H. hemerocallidea*; N, *H. interjecta*; O, *H. kraussiana*; P, *H. longifolia*, Q, *H. ludwigii*; R, *H. membranacea*. Arrow indicates distribution into Tropical Africa.



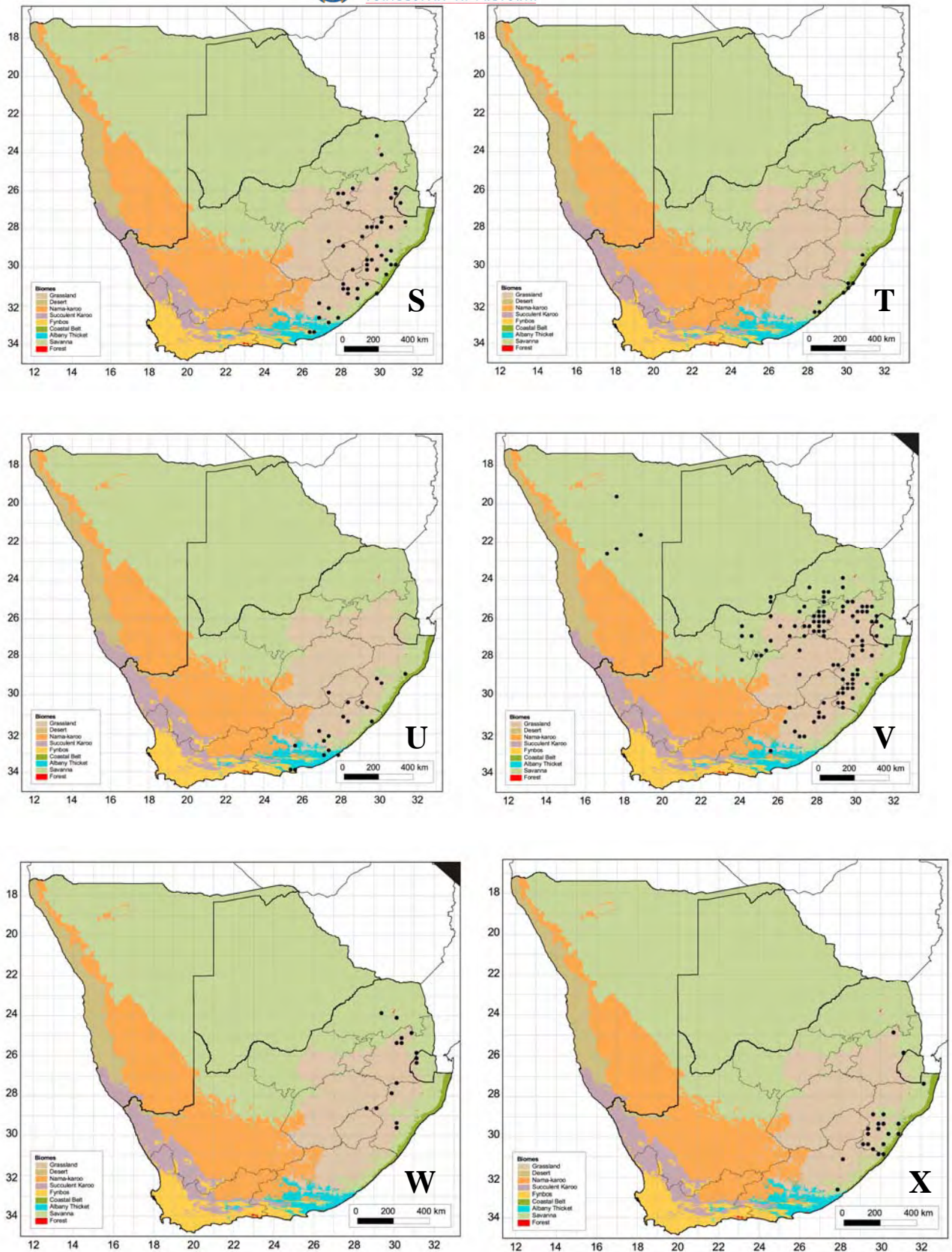


Figure 12.34 cont.—Known distribution of *Hypoxias*. S, *H. multiceps*; T, *H. nivea*; U, *H. obliqua*; V, *H. obtusa*; W, *H. parvifolia*; X, *H. parvula* var. *albiflora*; Arrow indicates distribution into Tropical Africa.



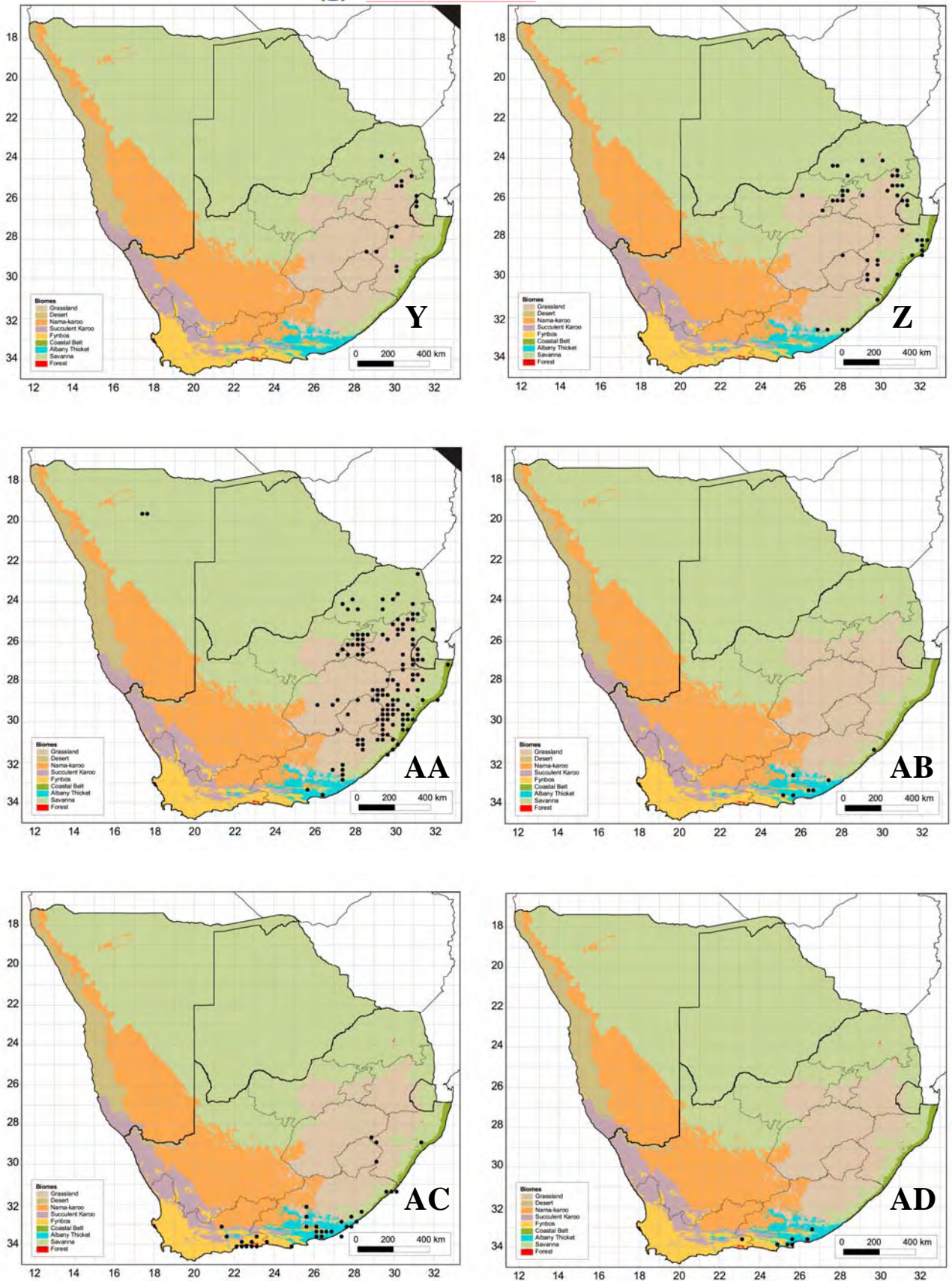


Figure 12.34 cont.—Known distribution of *Hypoxys*. Y, *H. parvula* var. *parvula*; Z, *H. rigidula* var. *pilossissima*; AA, *H. rigidula* var. *rigidula*; AB, *H. sobolifera* var. *pannosa*; AC, *H. sobolifera* var. *sobolifera*; AD, *H. stellipilis*. Arrow indicates distribution into Tropical Africa.



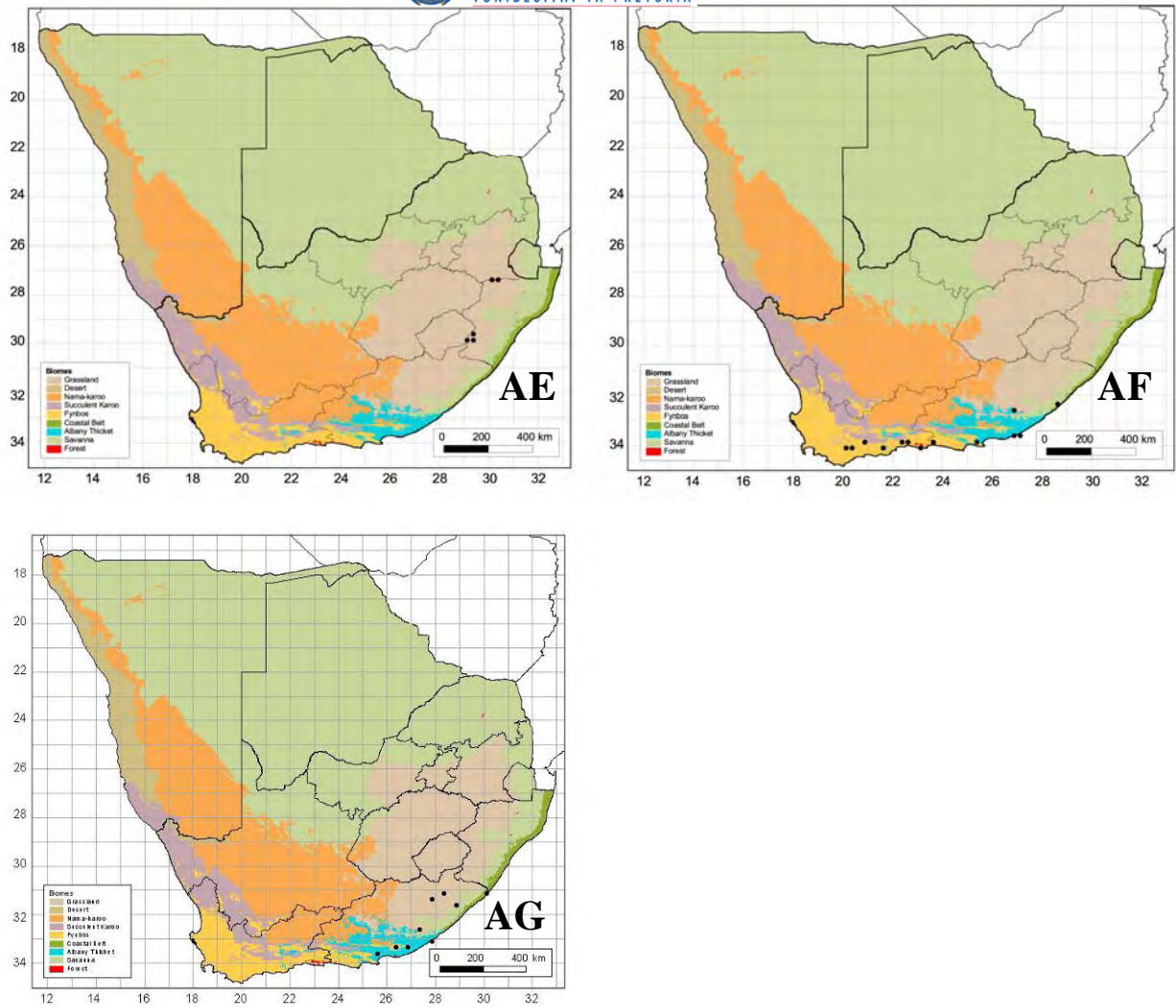


Figure 12.34 cont.—Known distribution of *Hypoxis*. AE, *H. tetramera*; AF, *H. villosa*; AG, *H. zeyheri*.