

Sunset Ridge Park

City of Newport Beach

March 13th, 2012

| | |
|---|----|
| Planting Design Narrative..... | 2 |
| Overall Planting Diagram..... | 3 |
| Comprehensive Tree, Shrub, Grass and Groundcover Planting List..... | 4 |
| Site Sections..... | 5 |
| Expanded CSS Zone..... | 6 |
| Water Infiltration / Native Buffer Zone..... | 7 |
| Residential Buffer Zone..... | 8 |
| Active Area Zone..... | 9 |
| Butterfly Garden Zone..... | 10 |
| Streetscape Slope Zone..... | 11 |
| Trees..... | 12 |

Overall Park Conceptual Planting Design Narrative

The landscape character of Sunset Ridge park has been designed to function as an active recreational facility with field sports, play areas and picnic areas while at the same time, providing a unique setting on the site by reestablishing a native Coastal Sage planting into the design. The approximately 13.70 acres of non-active zones of the park, will be designed to support wildlife habitat. The additional acreage of Coastal Sage Scrub (CSS) within the park will significantly expand the area of native habitat to the site. Based on the existing ESHA area, the establishment of such a large re-vegetation effort will greatly increase the acreage of viable native habitat for the California Gnat Catcher bird species. In the active, recreational areas of the park the landscape character will blend with the CSS plantings but rely on a wider range plant material to include native and other drought tolerant plant material that can withstand the rigors of public park environments. The man made landscape will take direct cues from native Coastal Sage community, and will respond accordingly to the site planning, circulation and various interface conditions. The landscape concept is described below, in the various conditions throughout the site.

Expanded C.S.S (Coastal Sage Scrub):

The Coastal Sage Scrub zone, is comprised of native species found in the CSS community. The forms of these plants are low growing in nature, ranging from between one foot and three feet tall, with a mounding character. The foliage colors are gray green, olive and dark green tones. Flower colors range from whites to yellows. Seasonal changes to the plants will provide density and color variations between the winter and summer seasons. Most of the plants tend to be aromatic and the branches soft and flexible. Characteristic plants of C.S.S are Artemesia, Atriplex, Enceila, Eriogonum, Leymus, Lupinus, Opuntia Rhamnus and Rhus. The larger species can eventually grow into small trees – the Toyon, Rhus and Sambucus will provide height relief to an otherwise uniform cover of shrubs. Supplemental native trees to be introduced in the expanded habitat and residential buffer areas are the California Buckeye, Chitalpa, Manzanita, Scrub Oak and Ceanothus.

Water Infiltration / Native Buffer:

The water infiltration / native buffer zone of the park, serves a functional purpose by collecting first flush run-off in the park, collecting and filtering the polluted water, and cleansing the water before it is diverted to the storm water system. The forms of the plants in this zone are low growing and mounding or upright in nature, ranging from one foot to two feet in height. Native species are used in this zone in that the role of the water infiltration zone is serving a dedicated purpose, and the plant material must be tolerant and supportive of that function. The foliage color of these plants range from dark and medium green to grey and blue green. A select few plants are shrubs, providing accent form and color within the framework of grasses. Flower colors are mostly in the white and cream range with an occasional orange or yellow. Additionally, gravel and large boulders will be utilized for structure and infiltration function in this zone, and also aid in creating a barrier between the existing ESHA zone and the park. Characteristic plants in this zone are Baccharis, Carex, Encelia, Juncus, Muhlenbergia and Leymus, with Salvia and Eriogonum as accent plantings. Tree plantings will be used in this area, but sparingly. The trees have been selected for adaptation to climate, water and soil adaptability. Tree selection has been made to include evergreen and deciduous species.

Residential Buffer:

The residential buffer plant zone is comprised of all native species, mostly all of which are endemic to the C.S.S plant community. This planting zone provides a foreground planting to the adjacent multi-family residential property to the north, and a backdrop planting to the fields and active area of the park. The forms of these plants are low growing in nature, ranging from between one foot and five feet tall, with a mounding character, with two species reaching eight to ten feet tall. The foliage colors are gray green, olive and dark green tones. Flower colors range from whites an blues to yellows and oranges. Seasonal changes to the plants will provide density and color variations between the winter and summer seasons. Most of the plants tend to be aromatic and the branches soft and flexible. Characteristic plants of the residential buffer zone are Arctostaphylos, Baccharis, Ceanothus, Enceila, Opuntia, Rhamnus and Rhus.. The larger species can eventually grow into small trees – the Rhamnus and Rhus will provide height relief to an otherwise uniform cover of shrubs.

Active Area:

The active area of the park will be comprised of a variety of non-native and native species. These plants will be required to survive the intensity of human traffic and maintenance. A durable and hearty plant material for this zone is imperative. A high number of the plants in this zone are grass species, and most of the plants in this zone are drought tolerant. The character of this zone is also a low, mounding form with very few trees due to view preservation issues. The forms of these plants are one foot to four feet high with a mounding or upright character. The foliage colors vary from dark green to medium olive and yellow green to a light gray and blue gray. Flower colors tend to be primarily in the blue to purple range. The predominant species in the active zone are ornamental grasses, and have a clumping habit – Carex, Festuca, Muhlenbergia, Nassella and Pennisetum will provide the grassy character of the plating areas. Baccharis, Rosmarinus, Salvia and Westringia will provide the mounding structure for the active areas.

Butterfly Garden:

The butterfly garden is comprised of plant species who's primary purpose is to attract butterflies. The butterfly garden is located upon a knoll that overlooks the water. It is a special feature to the park that has a specialized plant palette. The butterfly garden contains some native species, which are attractive to butterflies. The butterfly garden has been designed to provide seasonal color and interest throughout the year. It is eclectic in nature and resembles a private garden with many flowering plants. The forms of these plants are diverse, but are predominantly low and mounding. Some plants have an upright form and shape but remain between one foot and three feet tall. The foliage colors in this zone are also very diverse in greens and grays. Flower colors run the gamut of the color spectrum. Seasonal changes to the plants will provide density and color variations throughout the entire year. In addition to being a very colorful array of plants, the butterfly garden will also provide an array of different fragrances, some releasing odors upon touch.

Streetscape Slope:

The streetscape slope plant zone is comprised of all native species, mostly all of which are endemic to the C.S.S plant community. The location of the PCH slope to the existing ESHA areas, make using a native palette desirable way to extend and grow the native habitat area, and create a contiguous CSS zone. The streetscape slope zone is comprised of almost all native species. The non native species are being introduced to provide an edge to the native massing at PCH and the internal park walkways. The streetscape slope zone is comprised of many native species found in the CSS community. The forms of these plants are low growing in nature, ranging from between one foot and three feet tall, with a mounding character. Forms of the non native species are also low growing shrubs and grasses, to harmonize with the native palette. The foliage colors are gray green, olive and dark green tones. Flower colors range from whites to yellows. Seasonal changes to the plants will provide density and color variations between the winter and summer seasons. Most of the plants tend to be aromatic and the branches soft and flexible. Characteristic plants of CSS are Atriplex, Enceila, Eriogonum, Opuntia Rhamnus and Rhus. The larger species can eventually grow into small trees – the Toyon, Rhus and Sambucus will provide height relief to an otherwise uniform cover of shrubs. The streetscape slope zone will have a variety of trees planted on the slope, in areas where the trees will not interrupt the view of the adjacent properties.

Overall Park Irrigation Design Narrative:

All landscape areas will be permanently irrigated using an automatic, reclaimed water system. The irrigation system will be divided into several sub-systems based on the water requirements of each hydrozone. Hydrozone separations are determined by the sun orientation and water requirements of the specified plant material. The irrigation system shall be designed to minimize overspray and use an automatic weather-based controller.



LEGEND

- Expanded CSS - Native
Acreage: .16 ac.
 - Water Infiltration / Native Buffer Area
Acreage: .52 ac.
 - Residential Buffer
Acreage: 2.21 ac.
 - Active Area - Ornamental Evergreen Grasses
Acreage: 1.41 ac.
 - Turf Area (Including Driveable Grass)
Acreage: 5.32 ac.
 - Butterfly Garden
Acreage: .10 ac.
 - Streetscape Slope
Acreage: 1.51 ac.
 - Existing - Not to Be Disturbed*
Acreage: .93 ac.
 - 16' Wide Maintenance Road
Acreage: .24 ac. (6" Gravel Base & Thickened Wood Header)
 - Hardscape (Including Tot Lot)
- *Areas are outside of Grading Limits and are Not to Be Disturbed as part of the Sunset Ridge Park Project.
- NOV Areas
 - Bndy. of Potentially Significant Vegetation
 - Offset from Boundary of SE NOV and Potentially Significant Vegetation
 - Caltrans Scenic Easement
 - New Chain Link Fencing
 - Site Sections
Refer to Page 3 for Sections A, B & C
- TOTAL PARK ACREAGE**
13.70 ac. + 1.50 ac. Existing Parking Lot = 15.20 ac.

Red Denotes Plant Nativity to Southwest California Floristic Province

*Refer to Jepson Manual Higher Plants of California for Floristic Province designations

■ Denotes Plant Nativity to Coastal Sage Scrub Plant Community

EXPANDED CSS

| | |
|---|--------------------------|
| ■ <i>Amsinckia menziesii</i> var. <i>intermedia</i> | Fiddleneck |
| ■ <i>Artemisia californica</i> | California Sagebrush |
| ■ <i>Atriplex lentiformis</i> | Big Saltbush |
| ■ <i>Baccharis pilularis</i> | Coyote Brush |
| ■ <i>Bromus carinatus</i> | California Brome Grass |
| ■ <i>Encelia californica</i> | Coast Sunflower |
| ■ <i>Eriogonum fasciculatum</i> | California Buckwheat |
| ■ <i>Eriophyllum confertiflorum</i> | Golden Yarrow |
| ■ <i>Isocoma menziesii</i> | Coastal Goldenbush |
| ■ <i>Isomeris arborea</i> | Bladderpod |
| ■ <i>Leymus condensatus</i> | Giant Wild Rye |
| ■ <i>Leymus triticoides</i> | Creeping Wild Rye |
| ■ <i>Lotus scoparus</i> | Deerweed |
| ■ <i>Lupinus succulentus</i> | Arroyo Lupine |
| ■ <i>Melica imperfecta</i> | California Melic |
| ■ <i>Mimulus aurantiacus</i> | Orange Bush Monkeyflower |
| ■ <i>Nassella lepida</i> | Foothill Needlegrass |
| ■ <i>Opuntia littoralis</i> | Coast Prickly Pear |
| ■ <i>Opuntia prolifera</i> | Coastal Cholla |
| ■ <i>Phacelia cicutaria</i> | Caterpillar Phacelia |
| ■ <i>Phacelia minor</i> | California Bells |
| ■ <i>Rhamnus californica</i> | Coffeeberry |
| ■ <i>Rhamnus ilicifolia</i> | Hollyleaf Redberry |
| ■ <i>Rhus integrifolia</i> | Lemonade Berry |
| ■ <i>Salvia mellifera</i> | Black Sage |

WATER INFILTRATION / NATIVE BUFFER AREA

| | |
|--|------------------------|
| ■ <i>Baccharis pilularis</i> | Coyote Brush |
| ■ <i>Bromus carinatus</i> | California Brome |
| ■ <i>Elymus glaucus</i> | Western Rye Grass |
| ■ <i>Encelia californica</i> | Coast Sunflower |
| ■ <i>Eriogonum fasciculatum</i> | Common Buckwheat |
| ■ <i>Juncus patens</i> | Rush |
| ■ <i>Leymus condensatus</i> 'Canyon Prince'..... | Canyon Prince Wild Rye |
| ■ <i>Leymus triticoides</i> | Creeping Wild Rye |
| ■ <i>Lupinus succulentus</i> | Arroyo Lupine |
| ■ <i>Muhlenbergia rigens</i> | Deergrass |
| ■ <i>Nassella lepida</i> | Foothill Needlegrass |
| ■ <i>Nassella pulchra</i> | Purple Needlegrass |
| ■ <i>Opuntia littoralis</i> | Coast Prickly Pear |
| ■ <i>Rhamnus californica</i> | Coffeeberry |
| ■ <i>Salvia apiana</i> | White Sage |
| ■ <i>Salvia leucophylla</i> | Purple Sage |
| ■ <i>Salvia mellifera</i> 'Terra Seca'..... | Black Sage |

RESIDENTIAL BUFFER

| | |
|--|----------------------|
| ■ <i>Arctostaphylos</i> 'Pacific Mist'..... | Manzanita |
| ■ <i>Arctostaphylos</i> u. 'Point Reyes'..... | Manzanita |
| ■ <i>Baccharis pilularis</i> 'Pigeon Point'..... | Dwarf Coyote Brush |
| ■ <i>Baccharis pilularis</i> 'Twin Peaks'..... | Dwarf Coyote Brush |
| ■ <i>Ceanothus</i> g.h. 'Carmel Creeper'..... | Wild Lilac |
| ■ <i>Ceanothus</i> 'Concha'..... | Wild Lilac |
| ■ <i>Encelia californica</i> | Coast Sunflower |
| ■ <i>Muhlenbergia rigens</i> | Deergrass |
| ■ <i>Nassella lepida</i> | Foothill Needlegrass |
| ■ <i>Opuntia littoralis</i> | Coast Prickly Pear |
| ■ <i>Opuntia prolifera</i> | Coastal Cholla |
| ■ <i>Rhamnus californica</i> | Coffeeberry |
| ■ <i>Rhamnus ilicifolia</i> | Hollyleaf Redberry |
| ■ <i>Rhus integrifolia</i> | Lemonade Berry |

STREETSCAPE SLOPE

| | |
|---|--------------------------|
| ■ <i>Amsinckia menziesii</i> var. <i>intermedia</i> | Fiddleneck |
| ■ <i>Acacia redolens</i> 'Low Boy'..... | Prostrate Acacia |
| ■ <i>Arctostaphylos</i> 'Pacific Mist'..... | Manzanita |
| ■ <i>Atriplex lentiformis</i> | Big Saltbush |
| ■ <i>Baccharis pilularis</i> 'Pigeon Point'..... | Dwarf Coyote Brush |
| ■ <i>Baccharis pilularis</i> 'Twin Peaks'..... | Dwarf Coyote Brush |
| ■ <i>Ceanothus</i> g.h. 'Carmel Creeper'..... | Wild Lilac |
| ■ <i>Ceanothus</i> 'Joyce Coulter'..... | Wild Lilac |
| ■ <i>Ceanothus</i> 'Concha'..... | Wild Lilac |
| ■ <i>Encelia californica</i> | Coast Sunflower |
| ■ <i>Eriogonum fasciculatum</i> | California Buckwheat |
| ■ <i>Eriophyllum confertiflorum</i> | Golden Yarrow |
| ■ <i>Isocoma menziesii</i> | Coastal Goldenbush |
| ■ <i>Isomeris arborea</i> | Bladderpod |
| ■ <i>Leymus condensatus</i> | Giant Wild Rye |
| ■ <i>Lotus scoparus</i> | Deerweed |
| ■ <i>Lupinus succulentus</i> | Arroyo Lupine |
| ■ <i>Melica imperfecta</i> | California Melic |
| ■ <i>Mimulus aurantiacus</i> | Orange Bush Monkeyflower |
| ■ <i>Festuca mairei</i> | Atlas Fescue |
| ■ <i>Muhlenbergia rigens</i> | Deergrass |
| ■ <i>Nassella lepida</i> | Foothill Needlegrass |
| ■ <i>Opuntia littoralis</i> | Coast Prickly Pear |
| ■ <i>Opuntia prolifera</i> | Coastal Cholla |
| ■ <i>Rhamnus californica</i> | Coffeeberry |
| ■ <i>Rhamnus ilicifolia</i> | Hollyleaf Redberry |
| ■ <i>Rhus integrifolia</i> | Lemonade Berry |

BUTTERFLY GARDEN

| | |
|--|-------------------------|
| ■ <i>Achillea clavennae</i> | Silvery Yarrow |
| ■ <i>Achillea millefolium</i> 'Rosea'..... | Common Yarrow |
| ■ <i>Anigozanthos flavidus</i> | Kangaroo Paw |
| ■ <i>Buddleja davidii</i> | Butterfly Bush |
| ■ <i>Carex pansa</i> | California Meadow Sedge |
| ■ <i>Ceanothus</i> g.h. 'Carmel Creeper'..... | Wild Lilac |
| ■ <i>Ceanothus</i> 'Joyce Coulter'..... | Wild Lilac |
| ■ <i>Ceanothus</i> 'Concha'..... | Wild Lilac |
| ■ <i>Echium candicans</i> | Pride of Madeira |
| ■ <i>Encelia californica</i> | Coast Sunflower |
| ■ <i>Eriogonum fasciculatum</i> | Common Buckwheat |
| ■ <i>Festuca</i> o. g. 'Siskiyou Blue'..... | Blue Fescue |
| ■ <i>Lavandula angustifolia</i> 'Hidcote'..... | Lavender |
| ■ <i>Lupinus succulentus</i> | Arroyo Lupine |
| ■ <i>Mimulus</i> spp..... | Monkey Flower |
| ■ <i>Penstemon centranthifolius</i> | Scarlet Bugler |
| ■ <i>Penstemon grinnellii</i> | Grinnell's Beardtongue |
| ■ <i>Romneya coulteri</i> | Matilija Poppy |
| ■ <i>Rosmarinus</i> 'Collingwood Ingram'..... | Rosemary |
| ■ <i>Salvia greggii</i> | Autumn Sage |
| ■ <i>Salvia leucophylla</i> | Purple Sage |
| ■ <i>Salvia mellifera</i> 'Terra Seca'..... | Dwarf Black Sage |
| ■ <i>Sedum spathulifolium</i> | Stonecrop |
| ■ <i>Senecio flaccidus</i> var. <i>monoensis</i> | Mono Groundsel |
| ■ <i>Senecio mandraliscae</i> | Blue Chalk Sticks |
| ■ <i>Sisyrinchium bellum</i> | Blue-Eyed Grass |
| ■ <i>Tagetes lemmonii</i> | Mexican Marigold |
| ■ <i>Teucrium chamaedrys</i> | Creeping Germander |
| ■ <i>Trichostema lanatum</i> | Woolly Blue Curls |

ACTIVE AREA

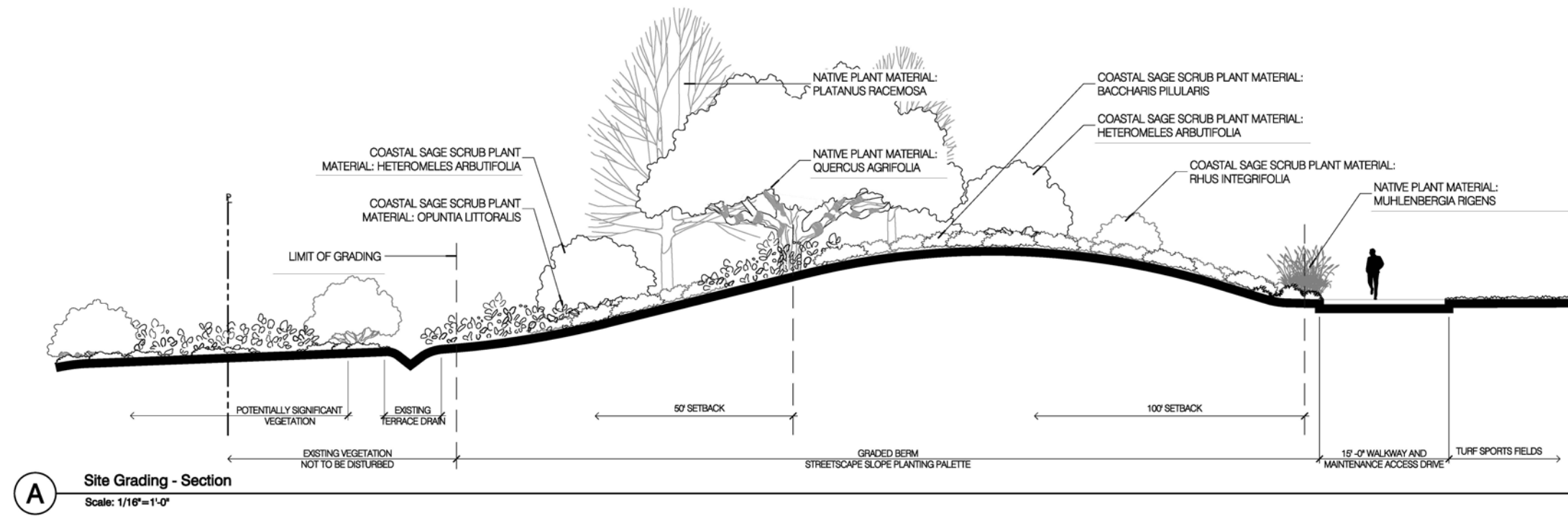
| | |
|--|-----------------------|
| ■ <i>Artemisia</i> 'Powis Castle'..... | Sagebrush |
| ■ <i>Baccharis pilularis</i> 'Pigeon Point'..... | Dwarf Coyote Brush |
| ■ <i>Baccharis pilularis</i> 'Twin Peaks'..... | Dwarf Coyote Brush |
| ■ <i>Carex divulsa</i> | Berkeley Sedge |
| ■ <i>Carex pansa</i> | Dune Sedge |
| ■ <i>Carex tumulicola</i> | Foothill Sedge |
| ■ <i>Carissa grandiflora</i> 'Green Carpet'..... | Natal Plum |
| ■ <i>Encelia californica</i> | Coast Sunflower |
| ■ <i>Festuca mairei</i> | Atlas Fescue |
| ■ <i>Festuca</i> o. g. 'Siskiyou Blue'..... | Blue Fescue |
| ■ <i>Leymus condensatus</i> 'Canyon Prince'..... | Giant Wild Rye |
| ■ <i>Leymus triticoides</i> | Creeping Wild Rye |
| ■ <i>Muhlenbergia capillaris</i> | Pink Muhlygrass |
| ■ <i>Muhlenbergia rigens</i> | Deergrass |
| ■ <i>Nassella cernua</i> | Nodding Needlegrass |
| ■ <i>Nassella lepida</i> | Foothill Needlegrass |
| ■ <i>Nassella pulchra</i> | Purple Needlegrass |
| ■ <i>Pennisetum alopecuroides</i> 'Little Bunny'..... | Fountain Grass |
| ■ <i>Rhapheolepis indica</i> 'Clara'..... | Inda Hawthorn |
| ■ <i>Rosmarinus officinalis</i> 'Huntington Carpet'..... | Rosemary |
| ■ <i>Rosmarinus officinalis</i> 'Tuscan Blue'..... | Rosemary |
| ■ <i>Salvia</i> 'Allen Chickering'..... | Allen Chickering Sage |
| ■ <i>Salvia greggii</i> | Autumn Sage |
| ■ <i>Wisteria sinensis</i> | Chinese Wisteria |

TREES

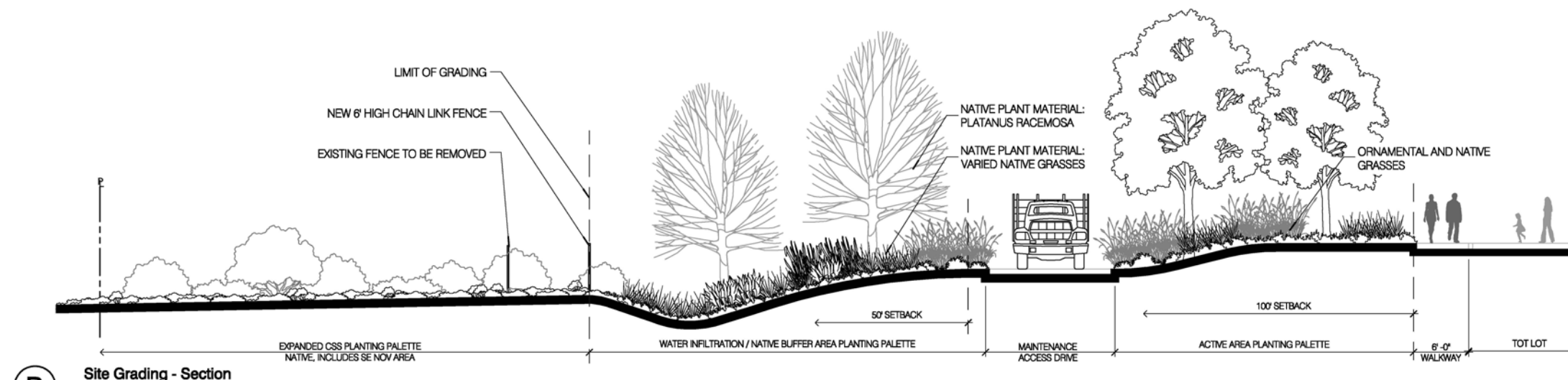
| | |
|--|---|
| ■ <i>Acacia pendula</i> | Weeping Myall - 15' TO 25' HEIGHT |
| ■ <i>Albizia julibrissin</i> | Silk Tree - 20' TO 30' HEIGHT |
| ■ <i>Arbutus</i> 'Marina'..... | Hybrid Strawberry Tree - 20' TO 30' HEIGHT |
| ■ <i>Bauhinia</i> x <i>blakeana</i> | Hong Kong Orchid Tree - 20' TO 25' HEIGHT |
| ■ <i>Ceanothus</i> 'Ray Hartman'..... | Ray Hartman Ceanothus - 15' TO 20' HEIGHT |
| ■ <i>Heteromeles arbutifolia</i> | Toyon - 15' TO 20' HEIGHT |
| ■ <i>Lyonothamus floribundus</i> spp. <i>floribundus</i> | Santa Catalina Ironwood - 20' TO 30' HEIGHT |
| ■ <i>Parkinsonia</i> 'Desert Museum'..... | Mexican Palo Verde - 20' TO 30' HEIGHT |
| ■ <i>Pinus torreyana</i> | Torrey Pine - 30' TO 50' HEIGHT |
| ■ <i>Platanus racemosa</i> | California Sycamore - 40' TO 60' HEIGHT |
| ■ <i>Prunus ilicifolia</i> spp. <i>ilicifolia</i> | Hollyleaf Cherry - 20' TO 30' HEIGHT |
| ■ <i>Quercus agrifolia</i> | Coast Live Oak - 30' TO 50' HEIGHT |
| ■ <i>Rhus integrifolia</i> | Lemonade Berry - 15' TO 25' HEIGHT |
| ■ <i>Rhus lancea</i> | African Sumac - 15' TO 25' HEIGHT |
| ■ <i>Rhus ovata</i> | Sugar Bush - 20' TO 30' HEIGHT |
| ■ <i>Sambucus mexicana</i> | Blue Elderberry - 15' TO 25' HEIGHT |



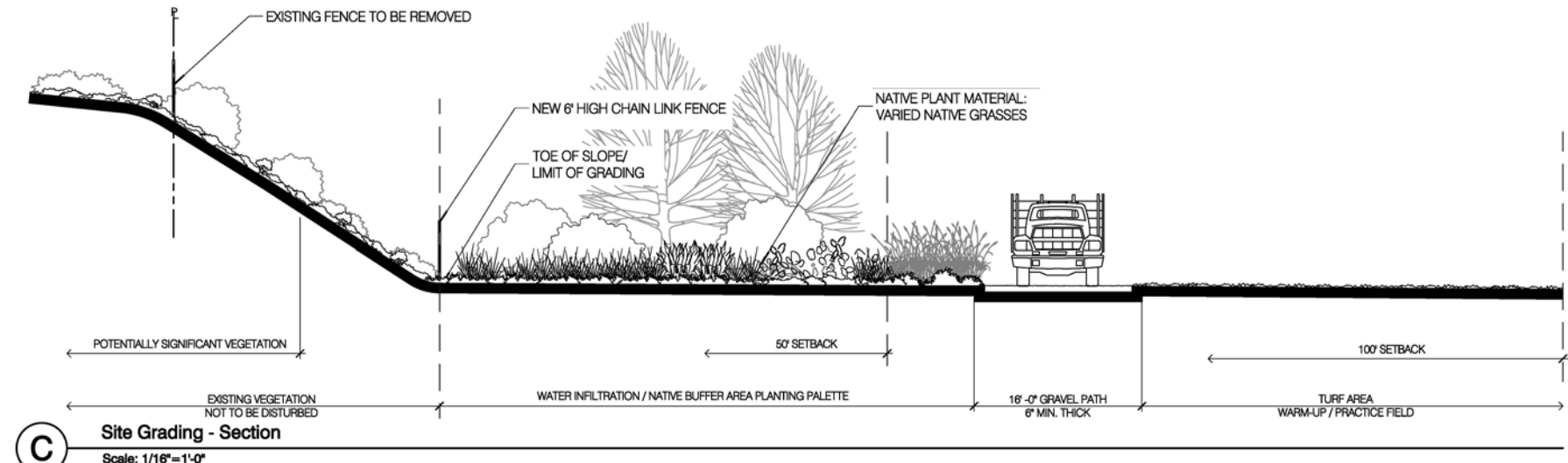
KEY MAP



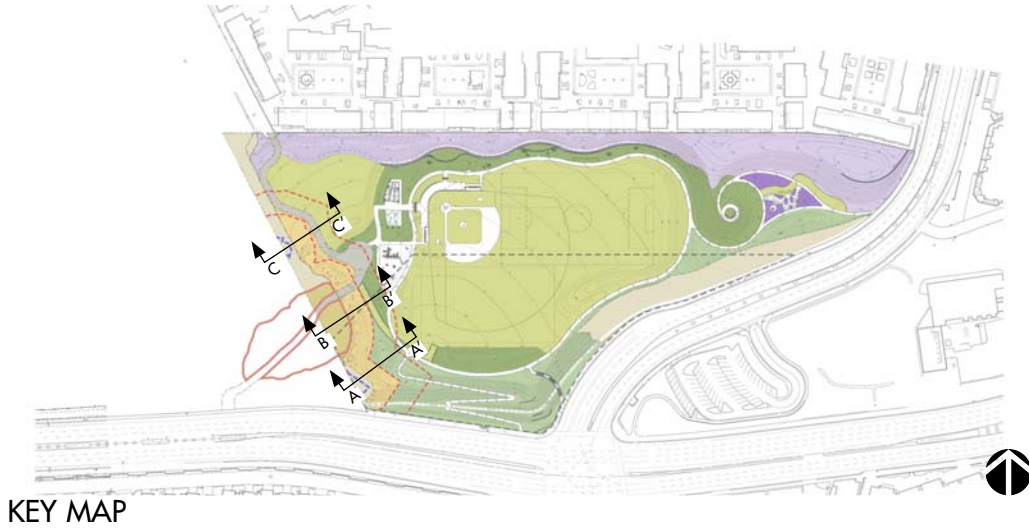
A Site Grading - Section
Scale: 1/16"=1'-0"



B Site Grading - Section
Scale: 1/16"=1'-0"



C Site Grading - Section
Scale: 1/16"=1'-0"



KEY MAP



ZONE CHARACTER



EXPANDED CSS

- Pure Coastal Sage plant material per southern California coastal zone for the existing CSS area
- Very informal, rustic and naturalistic character
- Low growing, mounding habit
- 1'-4' high shrubs or low ground covers
- Large shrub / small tree species such as Heteromeles and Rhamnus
- Supports existing adjacent ESHA



1



2



3



4

Shrubs, Grasses and Groundcover

The list below represents the backbone and character defining cross-section of shrubs, grasses and groundcover to be found in this area. To see the full plant list for this area please refer to page 09.

1. *Encelia californica*
2. *Eriogonum fasciculatum*
3. *Eriophyllum confertiflorum*
4. *Opuntia littoralis*
5. *Rhamnus ilicifolia*
6. *Salvia mellifera*
7. *Sambucus mexicana*



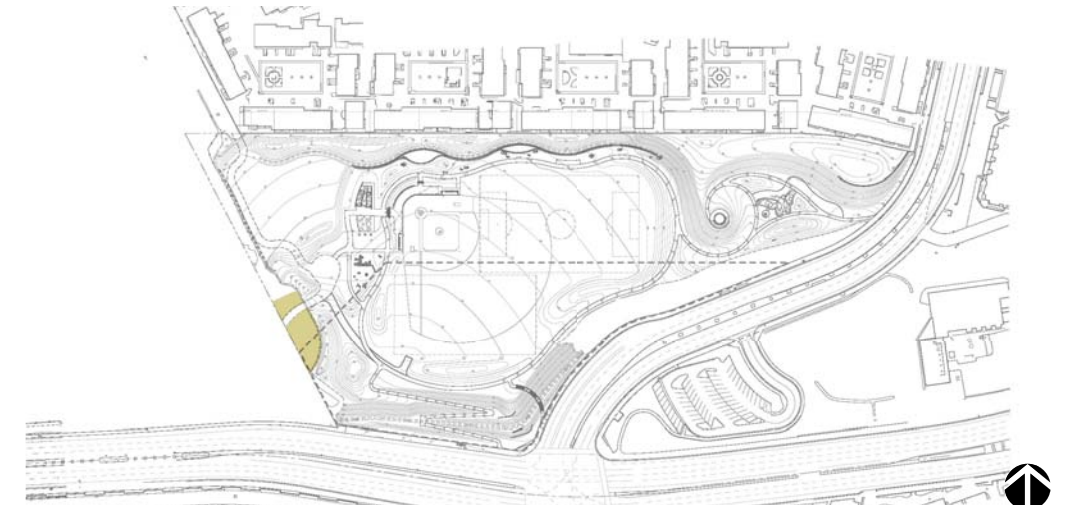
5



6



7



KEY MAP



ZONE CHARACTER



WATER INFILTRATION / NATIVE BUFFER AREA

- Plant material to function in seasonal water infiltration environment and act as a buffer
- 1'-3' high ornamental grasses and sedges with appropriate shrubs
- Informal and naturalistic character
- Plant material mixed with boulders and crushed stone
- Colors medium greens with some color and seasonal interest
- Mixed textures planted in masses
- To provide a defensible space from ESHA



1



2



3



4

Shrubs, Grasses and Groundcover

The list below represents the backbone and character defining cross-section of shrubs, grasses and groundcover to be found in this area. To see the full plant list for this area please refer to page 09.

1. Baccharis pilularis
2. Encelia californica
3. Juncus patens
4. Leymus condensatus 'Canyon Prince'
5. Leymus triticoides
6. Muhlenbergia rigens
7. Salvia mellifera



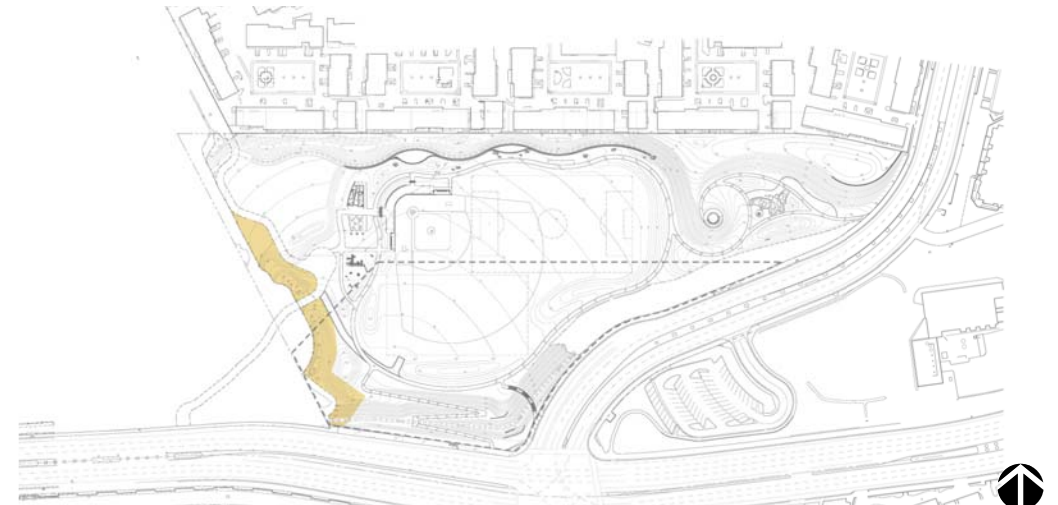
5



6



7



KEY MAP



ZONE CHARACTER



RESIDENTIAL BUFFER

- Informal, rustic and naturalistic character
- Low, mounding native plant material
- Dense foliage to buffer views from residential into park
- Sturdy, dense and thorny material to deter pedestrian movement from park to residential units
- Drought tolerant, no-maintenance plant material
- Introduction of Coastal Sage Scrub plants on slopes will extend CSS character and animal habitat further into the park.



1



2



3



4

Shrubs, Grasses and Groundcover

The list below represents the backbone and character defining cross-section of shrubs, grasses and groundcover to be found in this area. To see the full plant list for this area please refer to page 09.

1. *Arctostaphylos uva-ursi* 'Point Reyes'
2. *Baccharis pilularis*
3. *Encelia californica*
4. *Muhlenbergia rigens*
5. *Rhamnus ilicifolia*
6. *Rhus integrifolia*
7. *Salvia mellifera*



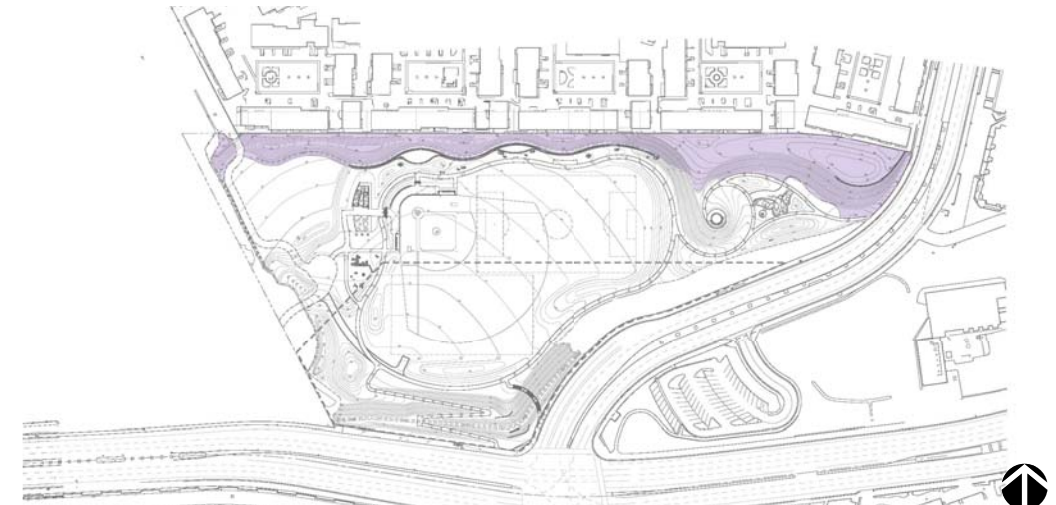
5



6



7



KEY MAP



ZONE CHARACTER



ACTIVE AREA

- Mixture of native and drought tolerant plant material
- Plants suitable for high traffic and high use in a recreational setting
- Color and seasonal interest with textural variation
- Low spreading evergreen trees shall be planted in strategic areas
- 1'-3' high ornamental grasses and sedges with appropriate shrubs
- Incorporation of Coastal Sage Scrub plant material to extend CSS character into the park.



Shrubs, Grasses and Groundcover

The list below represents the backbone and character defining cross-section of shrubs, grasses and groundcover to be found in this area. To see the full plant list for this area please refer to page 09.

1. Baccharis pilularis
2. Carissa grandiflora 'Green Carpet'
3. Festuca mairei
4. Muhlenbergia rigens
5. Salvia greggii
6. Wisteria sinensis



KEY MAP



ZONE CHARACTER



BUTTERFLY GARDEN

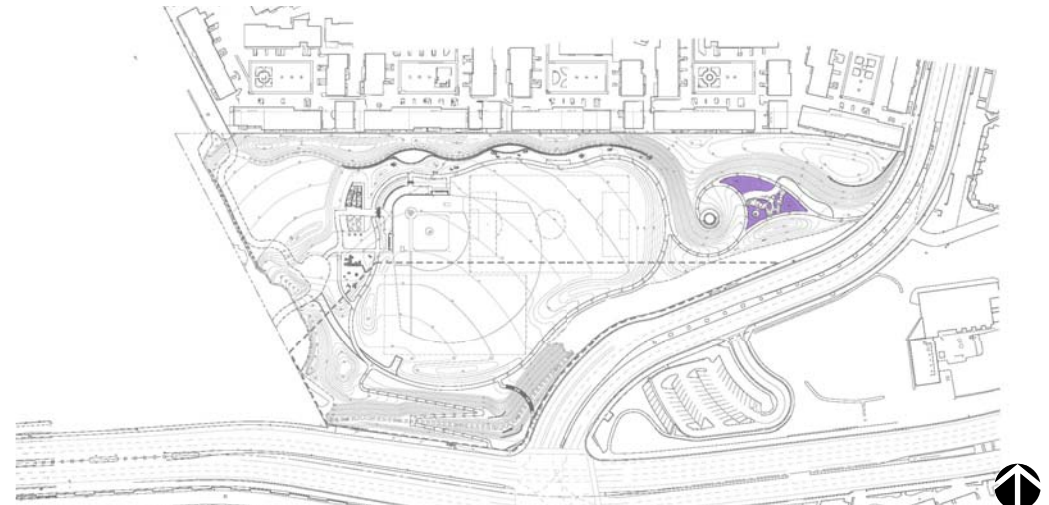
- Seasonally flowering plant material with low trees to allow unobstructed views
- Plant material to specifically attract Butterflies and Hummingbirds
- High interest zone with colorful blooms and foliage
- Plant selection to provide long overlapping blooming period
- Varied textures and forms with medium to bright green colored foliage
- Incorporation of native and Coastal Sage Scrub plant material



Shrubs, Grasses and Groundcover

The list below represents the backbone and character defining cross-section of shrubs, grasses and groundcover to be found in this area. To see the full plant list for this area please refer to page 09.

1. Ceanothus 'Joyce Coulter'
2. Echimium candicans
3. Eriogonum fasciculatum
4. Lupinus succulentus
5. Penstemon grinnellii
6. Rosmarinus spp.
7. Senecio flaccidus var. monoensis



KEY MAP

Butterfly Garden



STREETSCAPE SLOPE

- 20' to 25' high trees max, on middle to bottom of slope
- Medium to large drought tolerant shrubs such as Arbutus, Heteromeles and Rhus
- Mixture of native / drought tolerant shrubs and ground covers
- Introduction of Coastal Sage Scrub plants on slopes will extend CSS character and animal habitat further into the park.



1



2



3

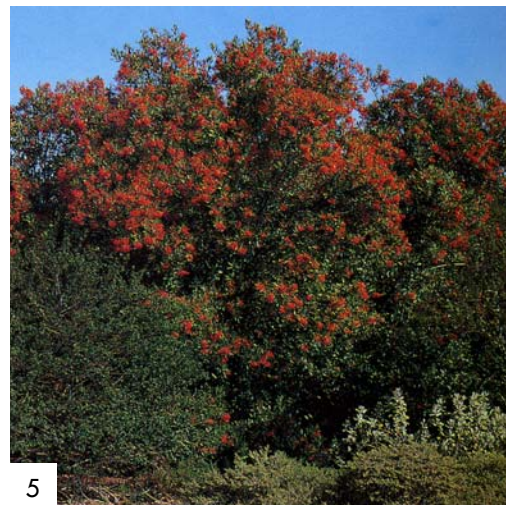


4

Shrubs, Grasses and Groundcover

The list below represents the backbone and character defining cross-section of shrubs, grasses and groundcover to be found in this area. To see the full plant list for this area please refer to page 09.

1. *Arctostaphylos uva-ursi* 'Point Reyes'
2. *Baccharis pilularis*
3. *Ceanothus* 'Joyce Coulter'
4. *Festuca mairei*
5. *Heteromeles arbutifolia*
6. *Muhlenbergia rigens*



5



6



KEY MAP

Streetscape Slope



1



2



3



4



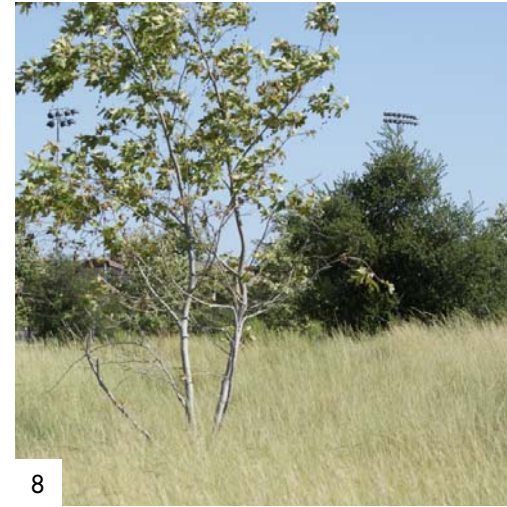
5



6



7



8



9



10



KEY MAP

TREES

- To provide shade and character definition throughout the park while preserving views for all.

The list below represents the backbone and character defining cross-section of shrubs, grasses and groundcover to be found in this area. To see the full plant list for this area please refer to page 10.

1. *Acacia pendula*
2. *Albizia julibrissin*
3. *Arbutus 'Marina'*
4. *Bauhinia x blakeana*
5. *Heteromeles arbutifolia*
6. *Parkinsonia 'Desert Museum'*
7. *Pinus torreyana*
8. *Platanus racemosa*
9. *Quercus agrifolia*
10. *Rhus ovata*