



Haritarium

Family Code: 1

Species code: 28- 2A

Naoroji Godrej Centre for Plant Research

Neuracanthus sphaerostachyus(Nees) Dalzell

Botanical name: Neuracanthus spaerostachyus (Nees) Dalzell
(=*Ledpidagathis spaerostachyus* Nees, = *N. lawii*)

Vernacular name: -

Family : Acanthaceae

Threatened category: Not evaluated.

Key characters: Stems not winged, Flowers in dense spherical or globose spikes. Bracts grandular hairy, Bractoles shorter than calyx, Calyx entire. Seeds glabrous, Bands on pollen grains not wavy.

Description: Perennial herbs, erect, 40-80 cm high. Stems many, obtusely quadrangular, more or less scabrous-pubescent. Leaves 6-10 X 3.5-5.5 cm, sessile. elliptic-oblong, lineolate on both sides, margins wavy. Apex obtuse, shortly acuminate. Flowers bluish or white with bluish tinge, surrounded by prominent, reddish, glandular bracts. Capsules c 1 X 0.5, ovoid subacute, shortly attenuated at base. Seeds c 0.4 cm across, orbicular, densely silky.

Flowering and fruiting: September -June.

Distribution: India – Endemic to Peninsular India.

Localities: - Through out state - Dhule, Kolhapur, Mumbai, Nasik, Pune, Raigad, Ratnagiri, Satara, Sindhudurg, districts.

Ecology: Common on gentle hill slopes, open grasslands and fringes of forests. Altitude ranges between 600-1200m above sea level,

Association: No specific plant association is observed.



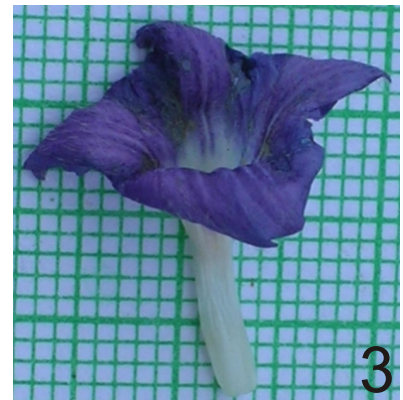
Haritarium

Family Code: 1

Species code: 28- 2B

Naoroji Godrej Centre for Plant Research

Neuracanthus sphaerostachyus(Nees) Dalzell



1.Habit, 2.&3. Flower 4. Bract., 5. Calyx, 6.Leaf- dorsal view, 7. Leaf- Ventral view.



Haritarium

Family Code: 1

Species code: 28- 2C

Naoroji Godrej Centre for Plant Research

Neuracanthus sphaerostachyus(Nees) Dalzell





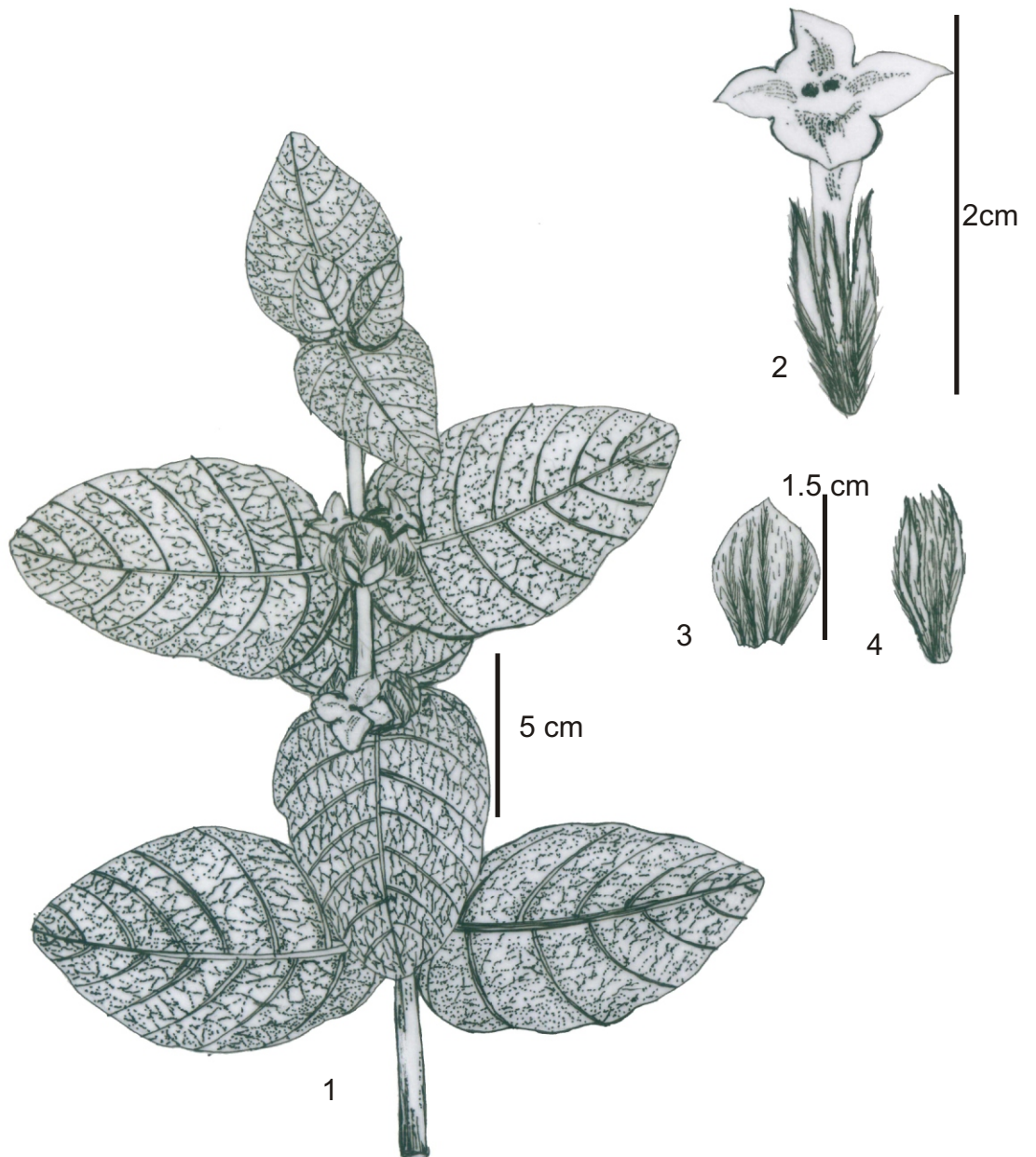
Haritarium

Family Code: 1

Species code: 28- 2D

Naoroji Godrej Centre for Plant Research

Neuracanthus sphaerostachyus(Nees) Dalzell



1. Habit, 2. Flower, 3.Bract, 4: Two lipped calyx.



Haritarium

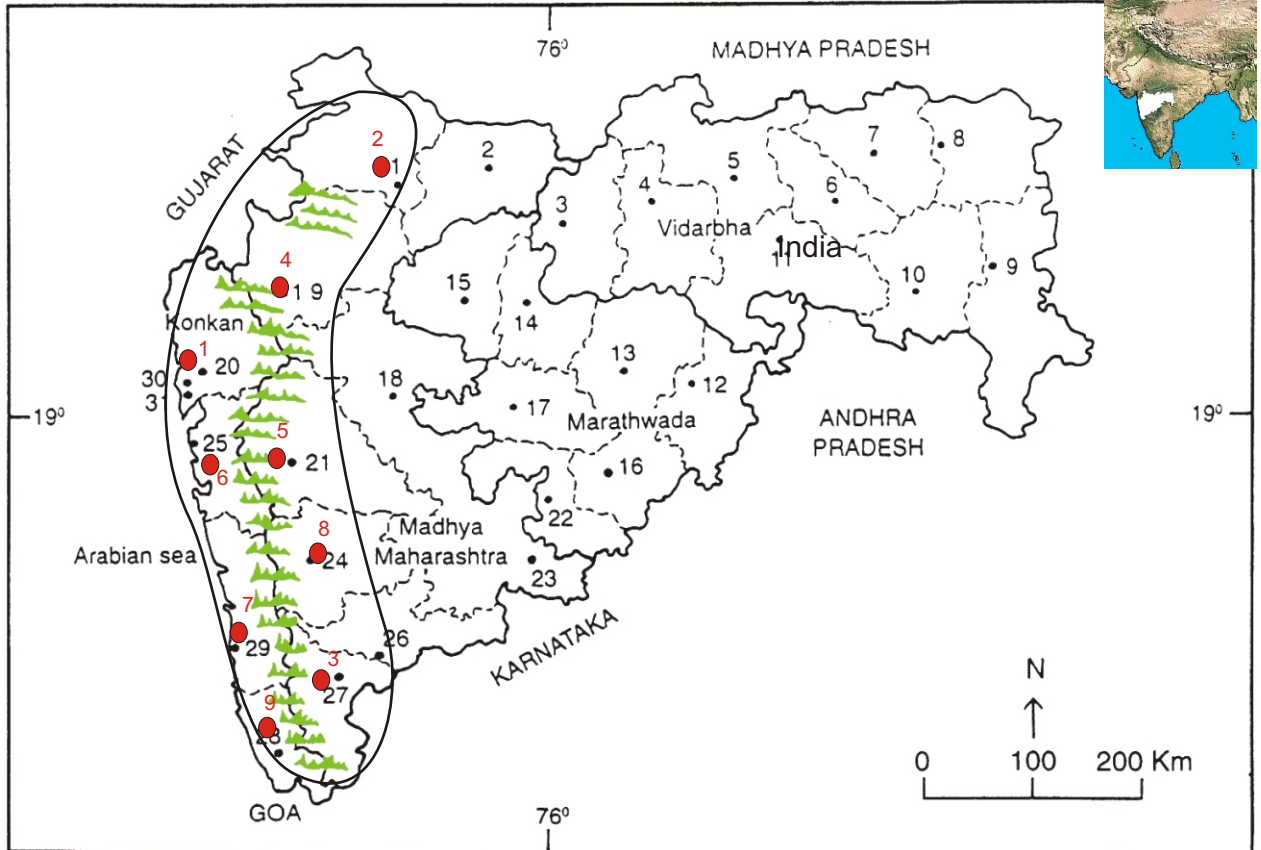
Family Code: 1

Species code: 28- 2E

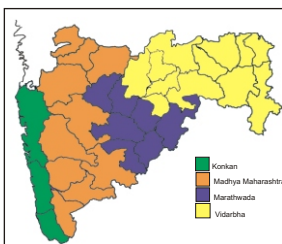
Naoroji Godrej Centre for Plant Research

Neuracanthus sphaerostachyus(Nees) Dalzell

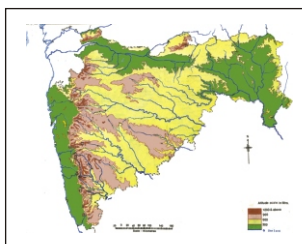
Location map



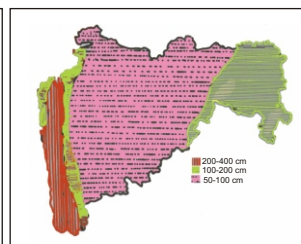
1.Dhule 2.Jalgaon 3. Buldhana 4.Akola 5.Amaravati 6.Wardha 7.Nagpur 8. Bhandara 9. Gadchiroli
10. Chandrapur 11. Yavatmal 12. Nanded 13. Parbhani 14. Jalna 15. Aurangabad 16.Latur
17. Beed 18. Ahmadnagar 19 Nashik 20. Thane 21. Pune 22. Osmanabad 23. Solapur 24.Satara
25. Raigad 26. Sangli 27. Kolhapur 28. Sindhudurg 29. Ratnagiri 30.Mumbai 31.Greater Mumbai.



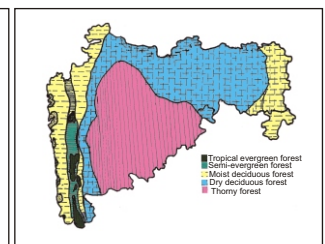
Geographical regions 1



Physical map 2



Rain fall map 3



Forest types 4

Localities- ●

1. Bombay, 2. Dhule, 3. Kolhapur, 4. Nasik, 5. Pune, 6. Raigad, 7. Ratnagiri,
8. Satara, 9. Sindhudurg

Geographical distribution:

Latitude (DMS): Between 18^o 31'- 16^o N & Longitude (DMS): 73^o 50'-74^o.5' E;



Haritarium

Family Code: 1

Species code: 28- 2F

Naoroji Godrej Centre for Plant Research

Neuracanthus sphaerostachyus(Nees) Dalzell

References:

Cooke. T (1904): **Flora of Presidency of Bombay**. Vol.2: 465.(rep. Ed.1967)

Hooker, J.D. *et al.*(1885):**The flora of British India**. London. Vol.4: 491.

Santapau, H. & P.V. Bole.(1952). A note on *Neuracanthus sphaerostachyus* Dalz. *J. Bombay nat. Hist. Soc.* 52: 897-900.

Singh N.P. & S. Karthikeyan (2000):(eds), **Flora of Maharashtra state, Dicotyledones**.Vol. 2: . B.S.I., Calcutta:652.

Tetali, *et al.* (2000): **Endemic Plants of India (A Status Report of Maharashtra State)**. Naoroji Godrej Centre for Plant Research, Shirwal: 42.