

Leptaspis banksii R.Br.

Family:
Poaceae

Brown, R. (1810) *Prodromus Florae Novae Hollandiae* : 211. Type: Queensland, Endeavour River, Banks & Solander; BM?.

Common name:
Rainforest Grass

Stem

Can attain a height of 1 m but usually flowers and fruits when smaller.

Leaves

Leaf blades rather variable in size, frequently linear, about 6-29 x 1-4 cm. Upper surface of the leaf blade and margin scabrous. Underside of the leaf blade clothed in fine short white hairs. Venation longitudinal and parallel.

Flowers

Outer bracts two, one tongue-like bract inside the other which is inflated into a dome with a small opening near the base. Flowers about 4 x 3.5 mm, clothed in short hooked hairs. Tepals (?) six, very small, around the base of the ovary. Ovary hairy on the upper surface. Ovary, style and stigma about 2-3 mm long.

Fruit

Fruits about 3-4 x 3 mm and resemble the outer surface of a ribbed bivalved sea shell. Outer surface of the fruits clothed in hooked hairs which adhere to clothing etc. Seed about 3 mm long. Endosperm soft.

Seedlings

First leaves emerge through a pore in the sheathing base of the 'cotyledon'. At the tenth leaf stage: leaf blade twisted through 180 at its junction with the 'petiole' so that the undersurface faces upwards. Fine teeth visible with a lens on the leaf blade margin and both the upper and lower surfaces of the midrib and sometimes the major veins.

Distribution and Ecology

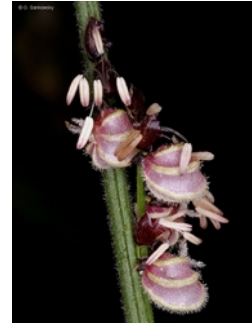
Occurs in CYP, NEQ and CEQ. Altitudinal range from sea level to 300 m. Grows in disturbed or undisturbed rain forest on a variety of sites. Also occurs in Malesia.

Natural History & Notes

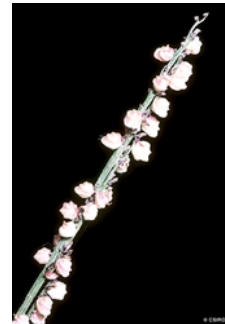
Food plant for the larval stages of the Large Darter and Small Darter Butterflies. Common & Waterhouse (1981).

RFK Code

3442



Flowers [not vouchered]. © G. Sankowsky



Fruit © CSIRO



Habit, leaves and fruit. © CSIRO



Scale bar 10mm. © CSIRO



10th leaf stage. © CSIRO



Web edition hosted at <https://apps.lucidcentral.org/rainforest>