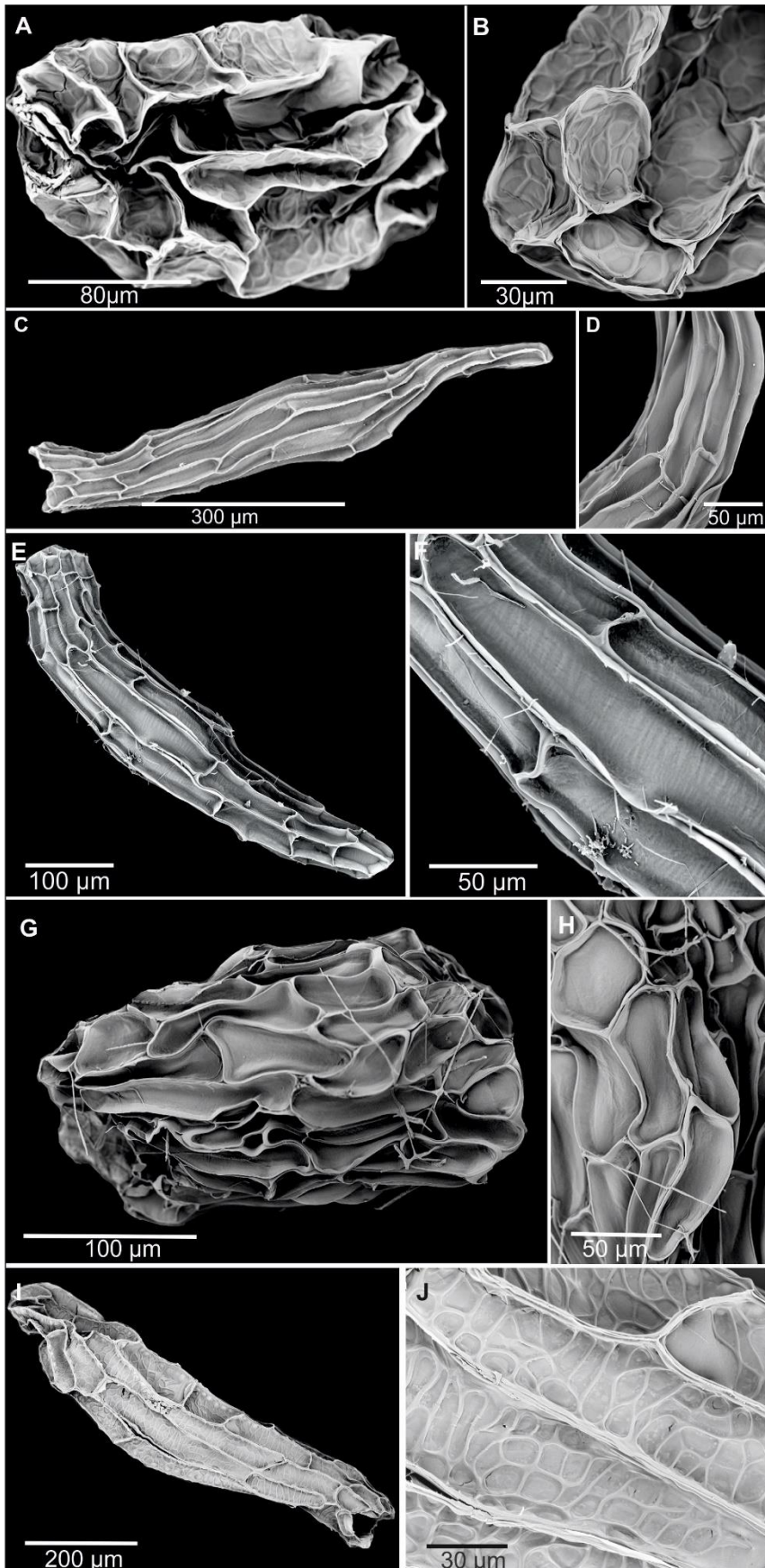
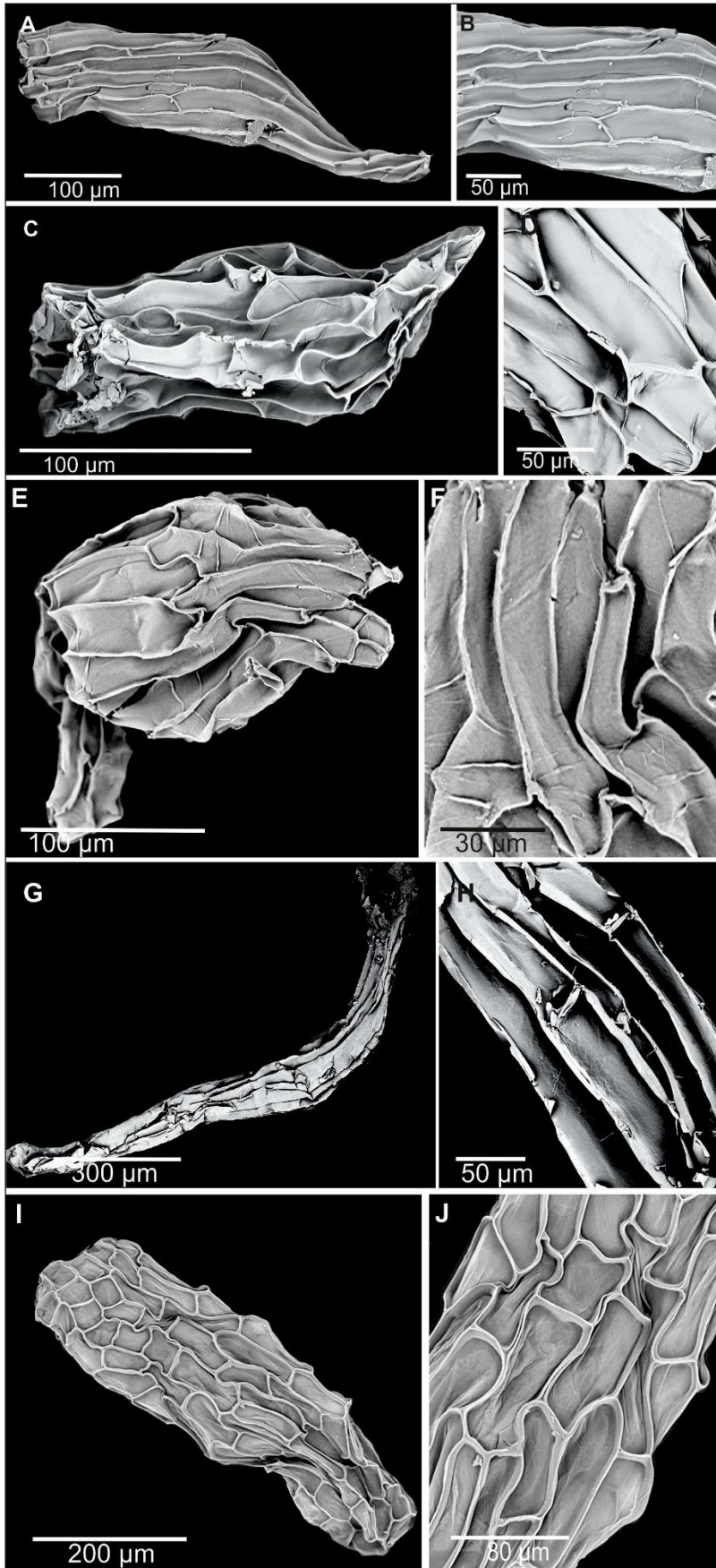


ANNEX S2. DIGITAL IMAGES OF THE TAXA STUDIED

**Figure S1.** A, B - *Androcorys pugioniformis*, C, D - *Bonatea pratensis*, E, F - *Bonatea speciosa*, G, H - *Chamorchis alpina*, I, J - *Gennaria diphylla*,



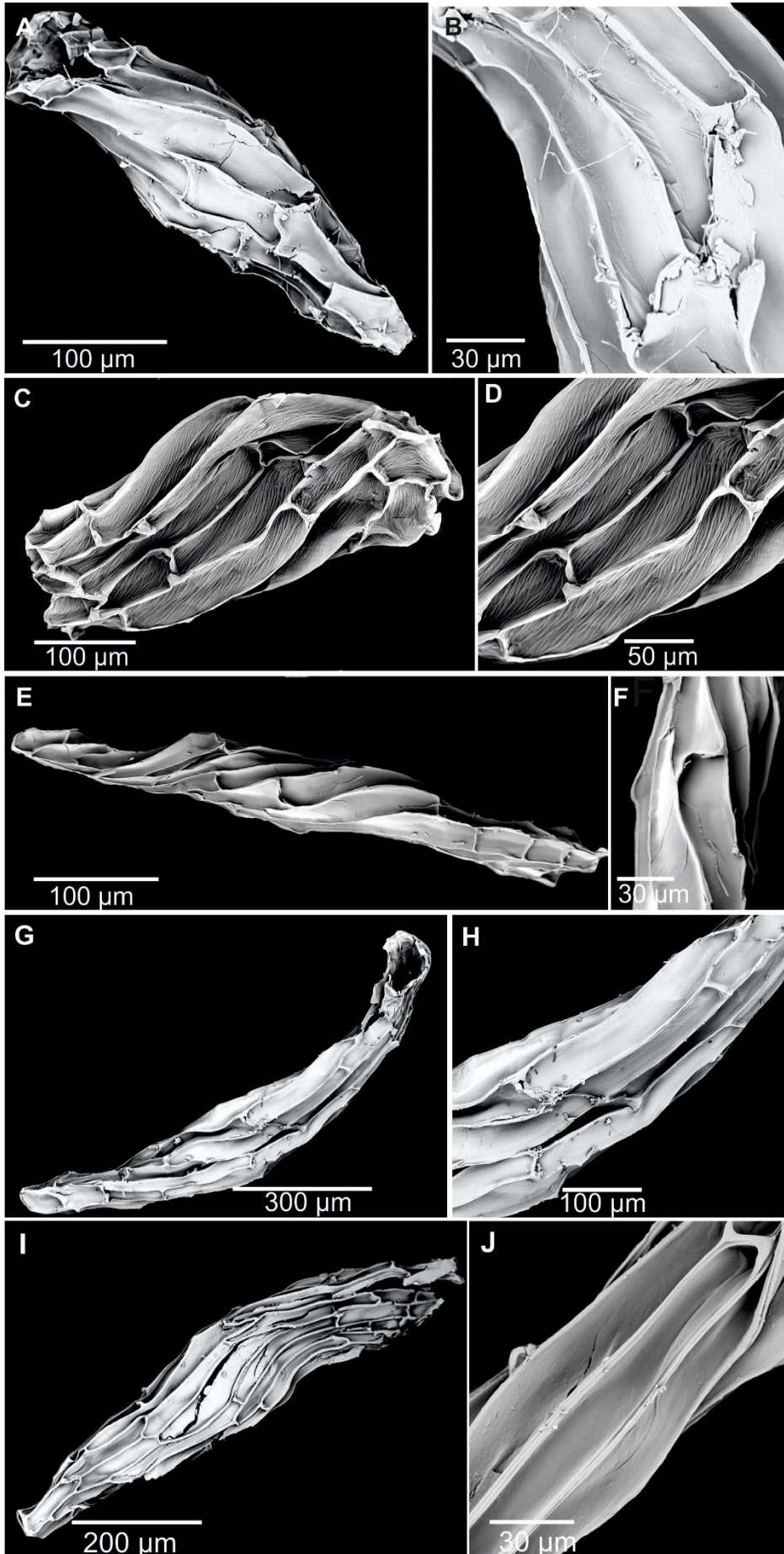
**Figure S2.** A, B - *Habenaria acuífera*, C, D - *Habenaria acuminata*, E, F - *Habenaria aitchisonii*, G, H - *Habenaria alagensis*, I, J - *Habenaria alata*,



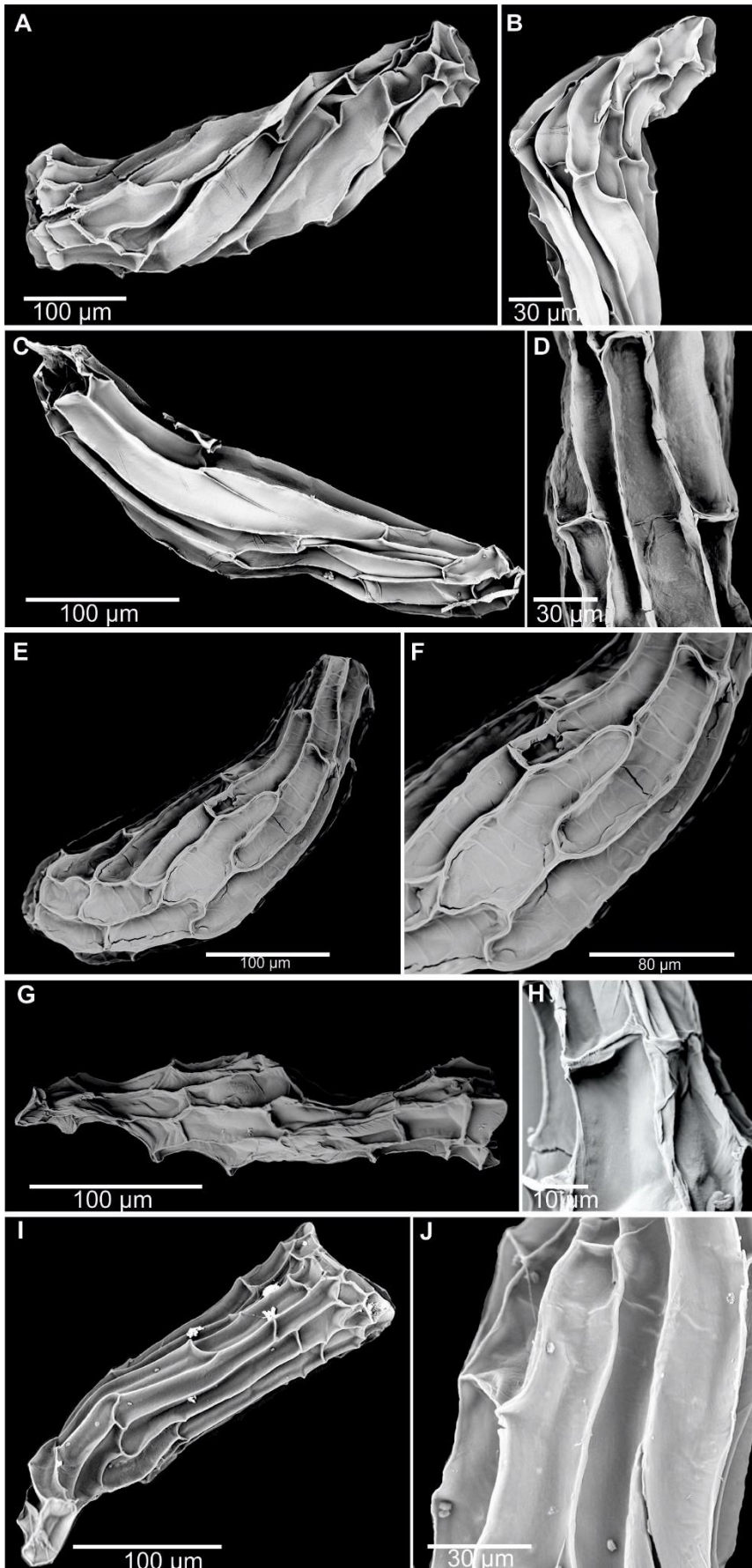
**Figure S3.** A, B - *Habenaria amplifolia*, C, D - *Habenaria aristulifera*, E, F - *Habenaria baeuerlenii*, G, H - *Habenaria bangii*, I, J - *Habenaria barbata*,



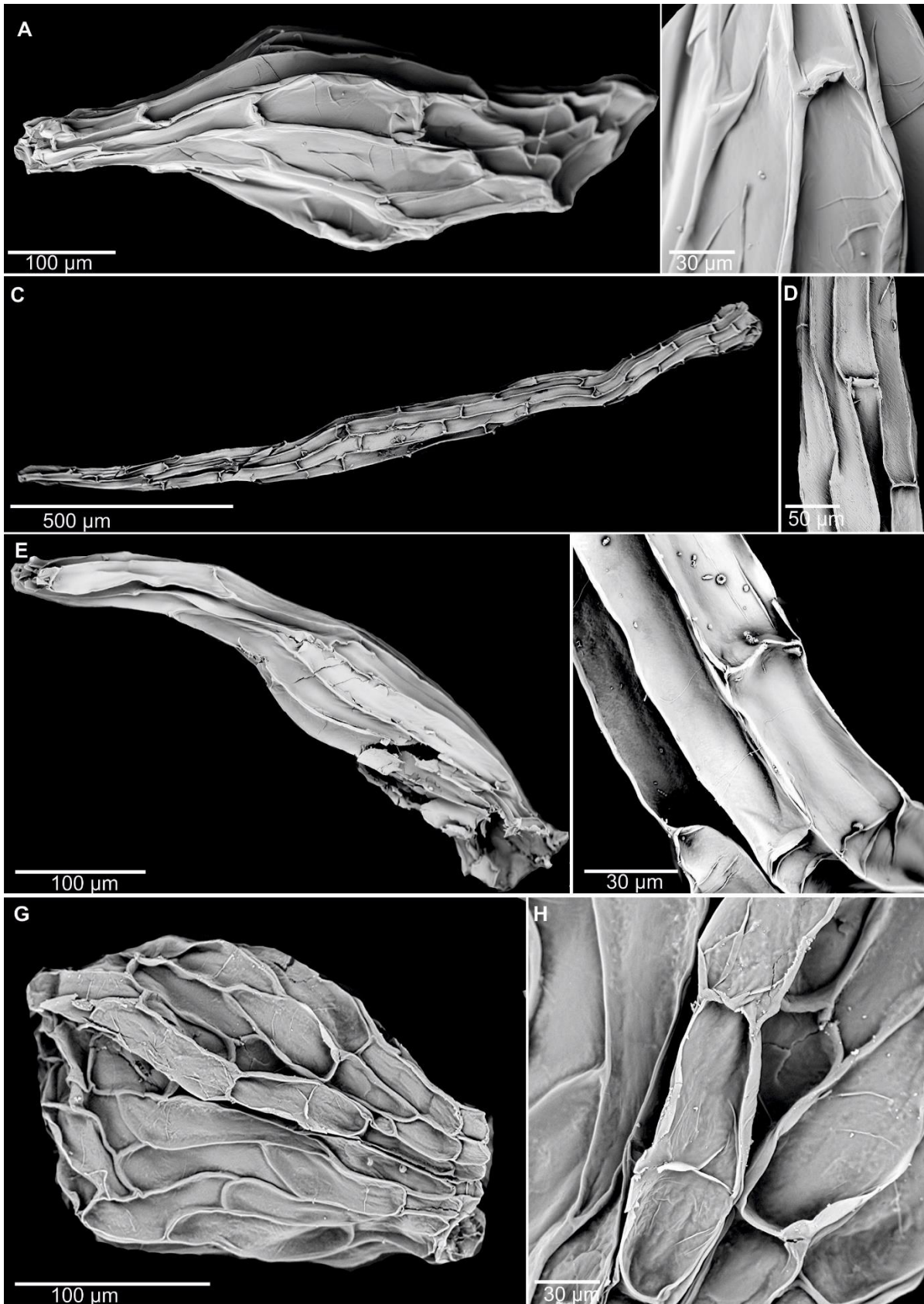
**Figure S4.** A, B - *Habenaria brachyphylla*, C, D - *Habenaria brevilabiata*, E, F - *Habenaria candolleana*, G, H - *Habenaria* cf. *arenaria*, I, J - *Habenaria* cf. *micrantha*,



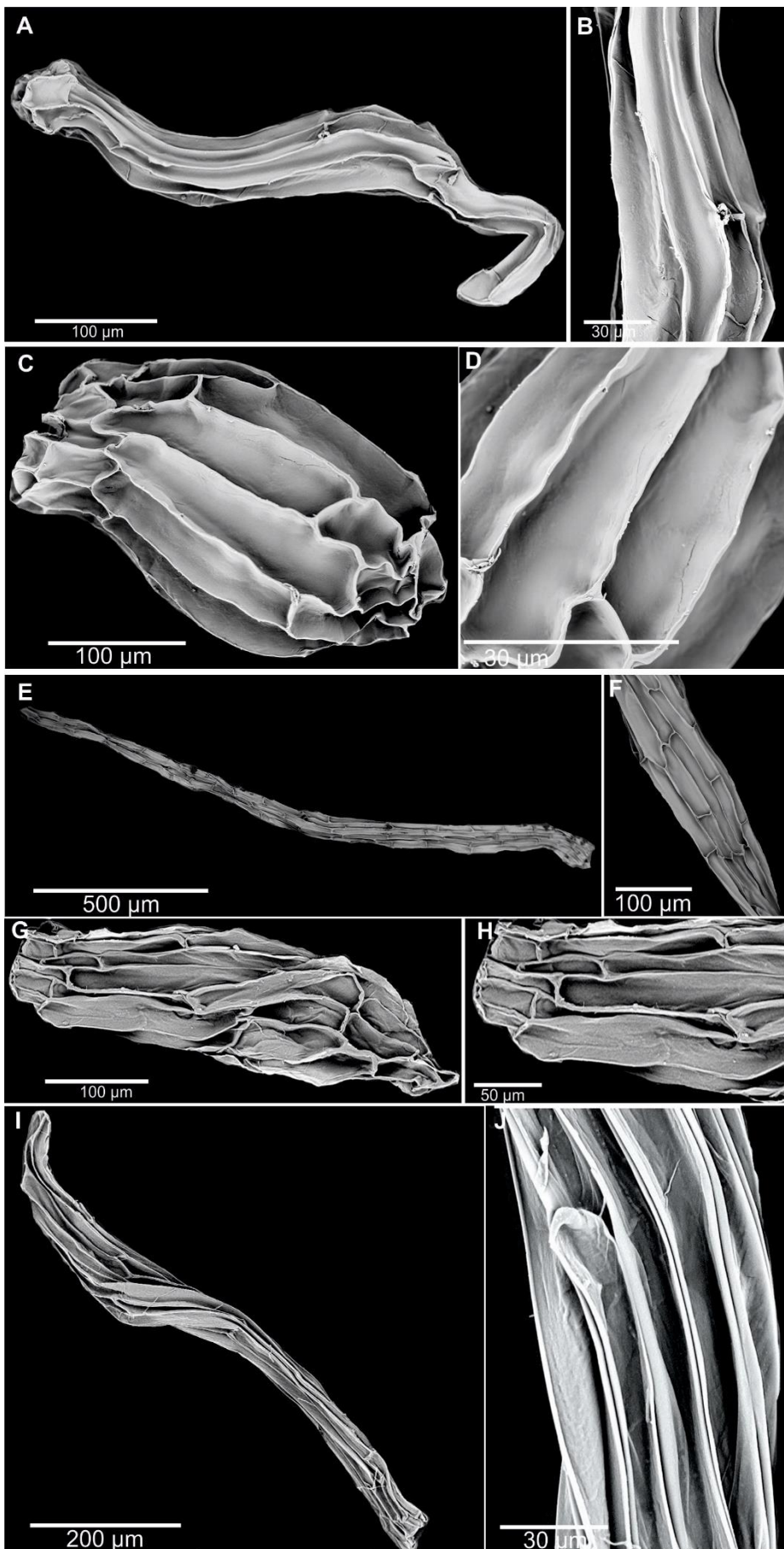
**Figure S5.** A, B - *Habenaria chlorotica*, C, D - *Habenaria clavata*, E, F - *Habenaria cordata*, G, H - *Habenaria cornuta*, I, J - *Habenaria crassifolia*,



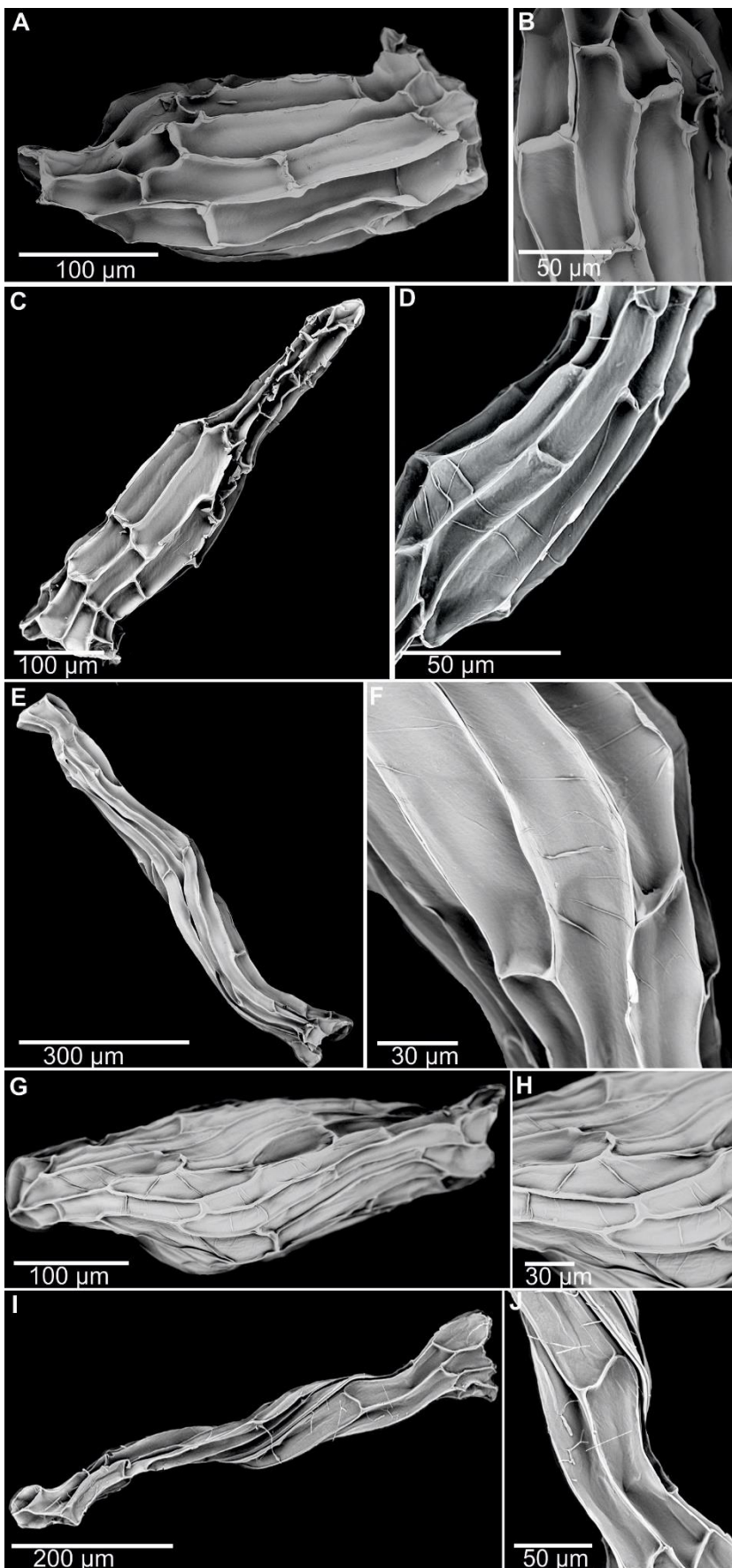
**Figure S6.** A, B - *Habenaria davidii*, C, D - *Habenaria delessertiana*, E, F - *Habenaria dentata*, G, H - *Habenaria diceras*,



**Figure S7.** A, B - *Habenaria diphylla*, C, D - *Habenaria dives*, E, F - *Habenaria dracaenifolia*, G, H - *Habenaria dusenii*, I, J - *Habenaria dutrae*,



**Figure S8.** A, B - *Habenaria filicornis*, C, D - *Habenaria foliosa*, E, F - *Habenaria furcifera*, G, H - *Habenaria glaucifolia*, I, J - *Habenaria gollmeri*,

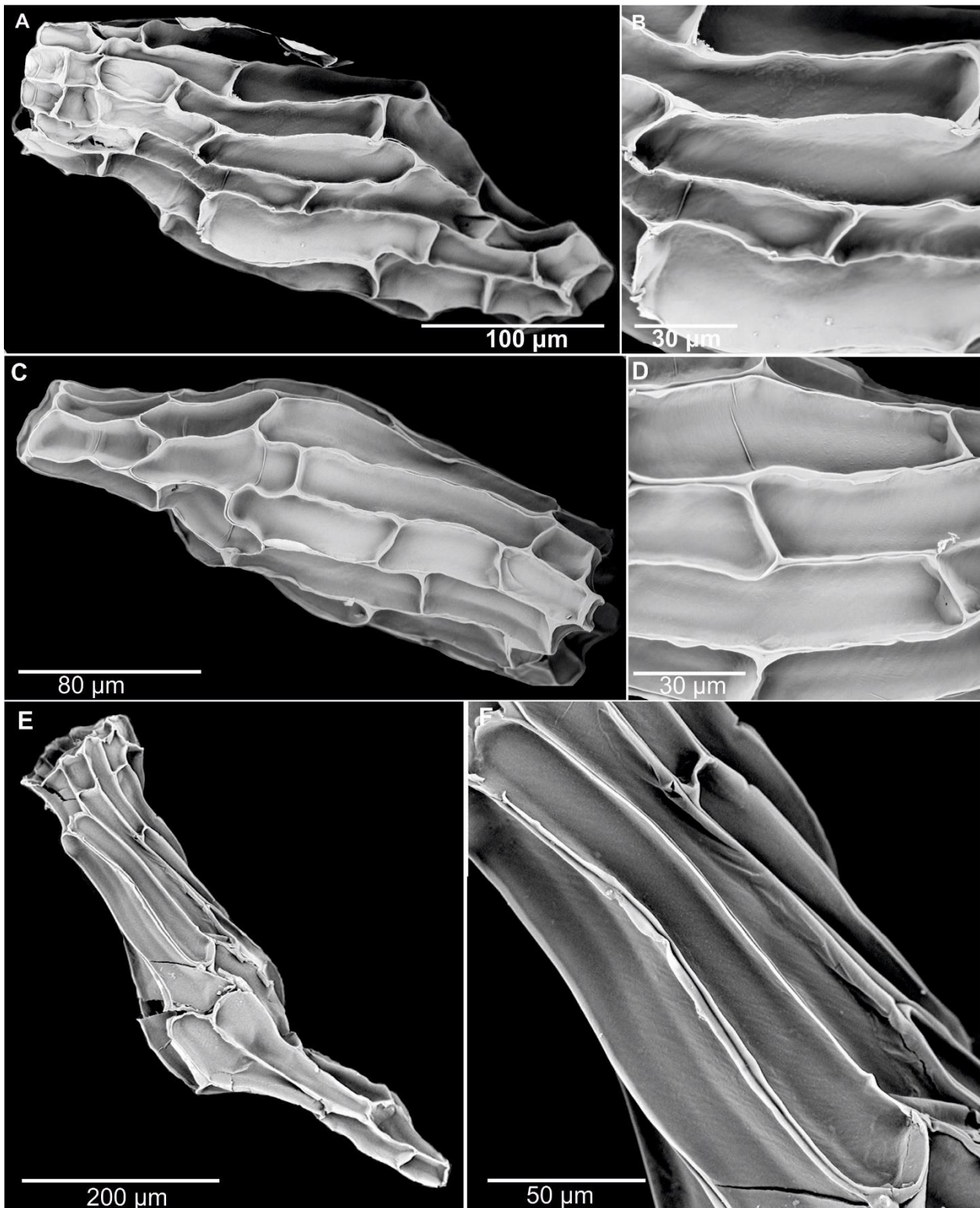




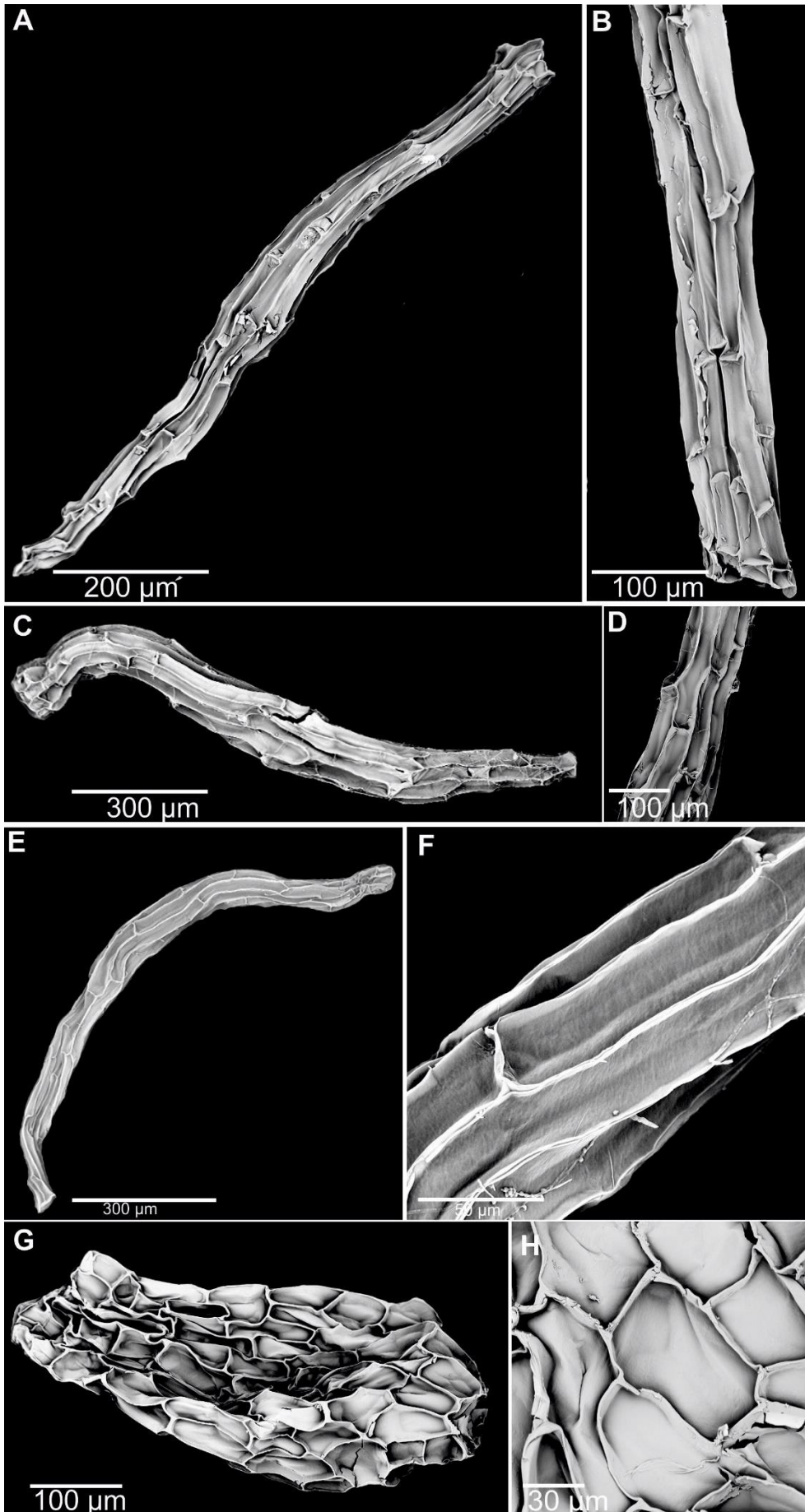
**Figure S9.** A, B - *Habenaria gourlieana*, C, D - *Habenaria goyazensis*, E, F - *Habenaria graciliscapa*, G, H - *Habenaria heyneana*,



Figure S10. A, B - *Habenaria hologlossa*, C, D - *Habenaria huillensis*, E, F - *Habenaria humidicola*,



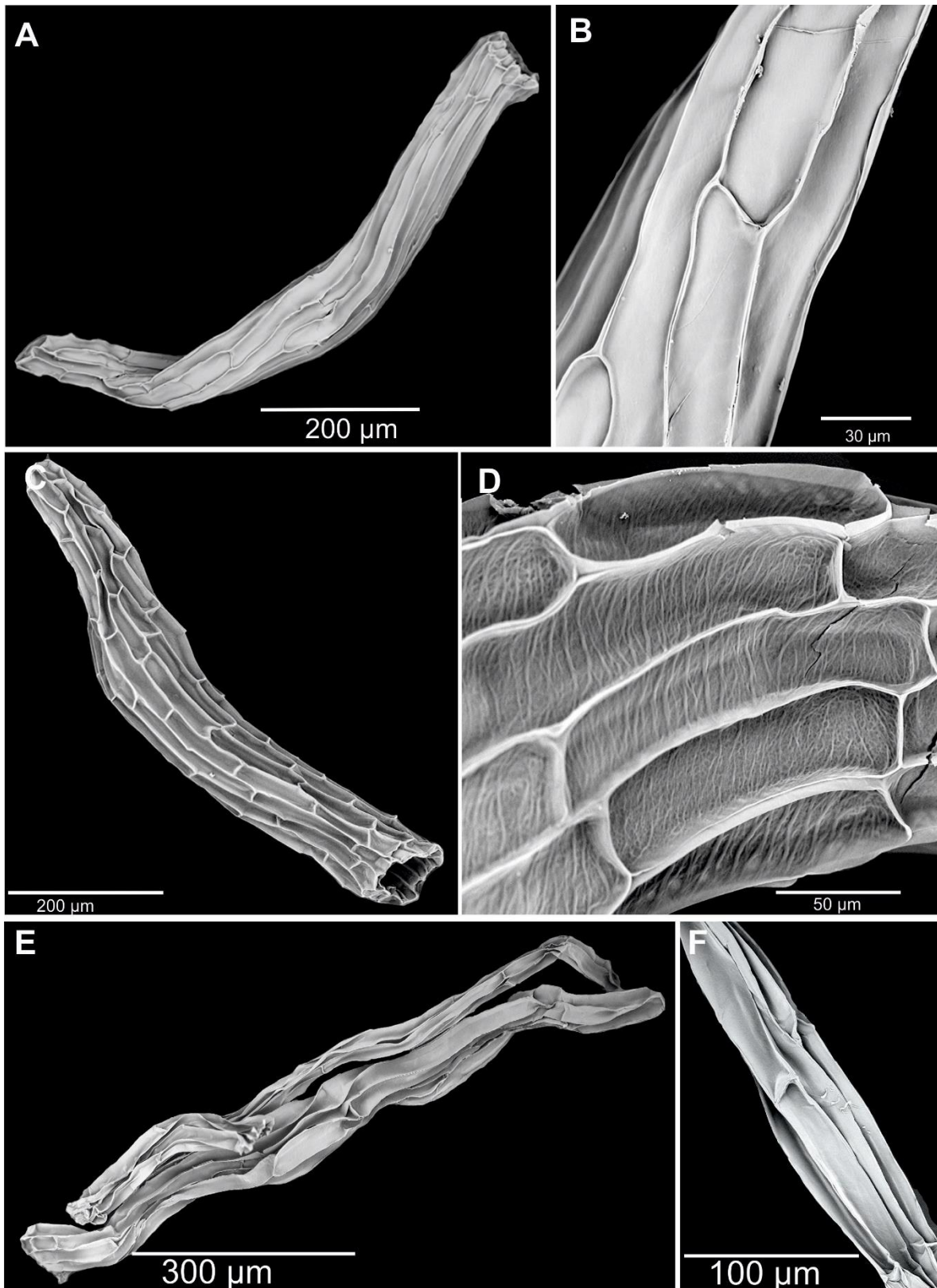
**Figure S11.** A, B - *Habenaria hystrix*, C, D - *Habenaria incurva*, E, F - *Habenaria josephensis*, G, H - *Habenaria kyimbilae*,



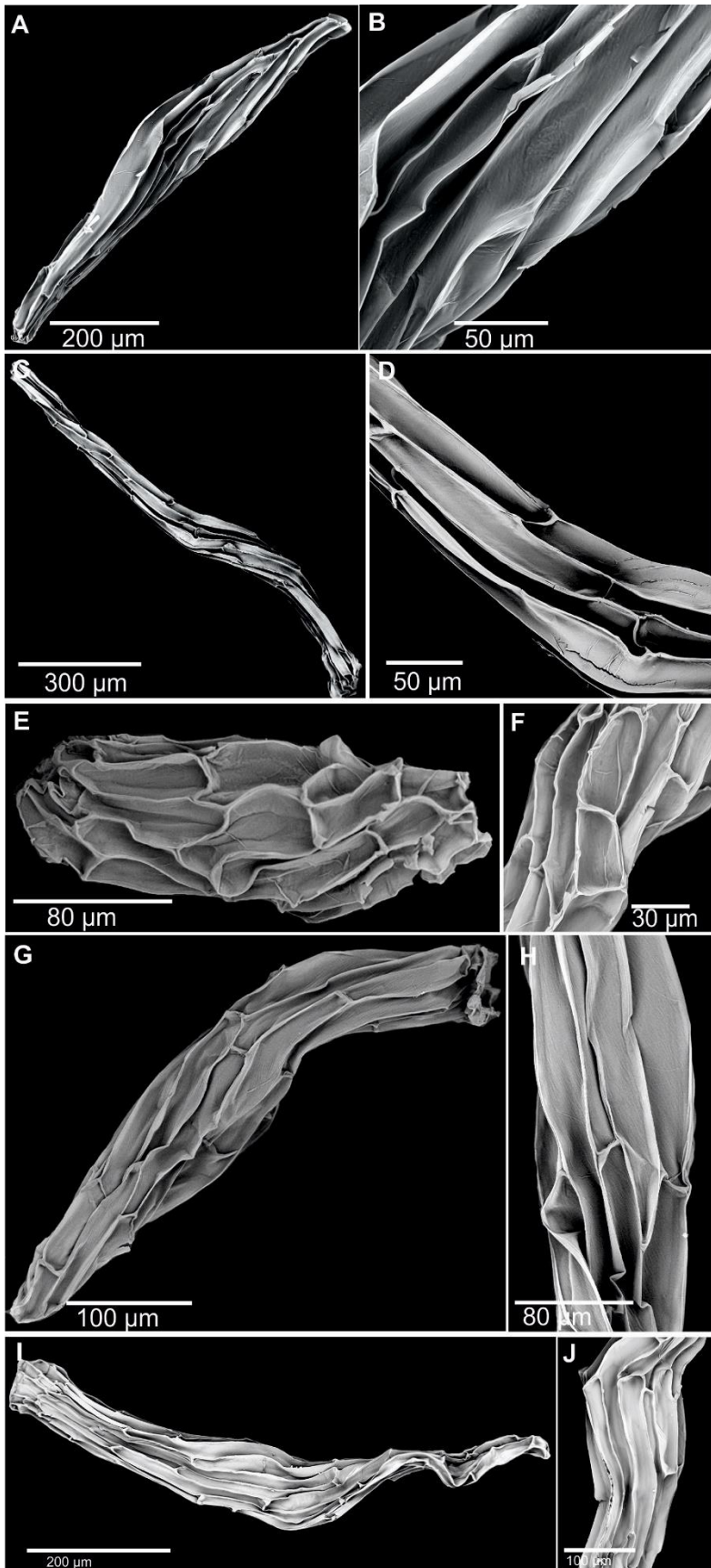
**Figure S12.** A, B - *Habenaria linderi*, C, D - *Habenaria longicauda*, E, F - *Habenaria magnirostris*, G, H - *Habenaria malacophylla*, I, J - *Habenaria malintana*,



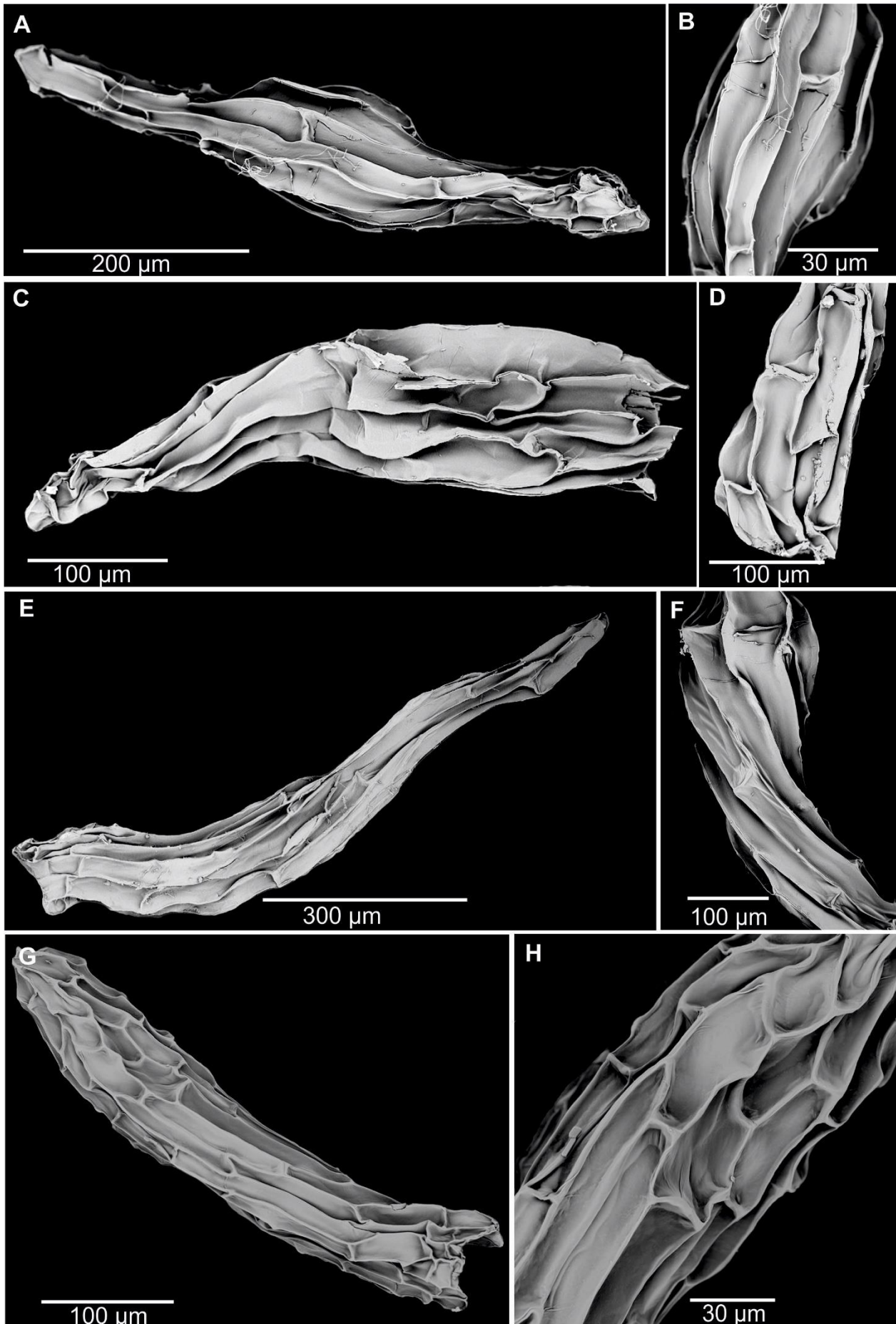
**Figure S13.** A, B - *Habenaria marginata*, C, D - *Habenaria marquisensis*, E, F - *Habenaria medioflexa*,



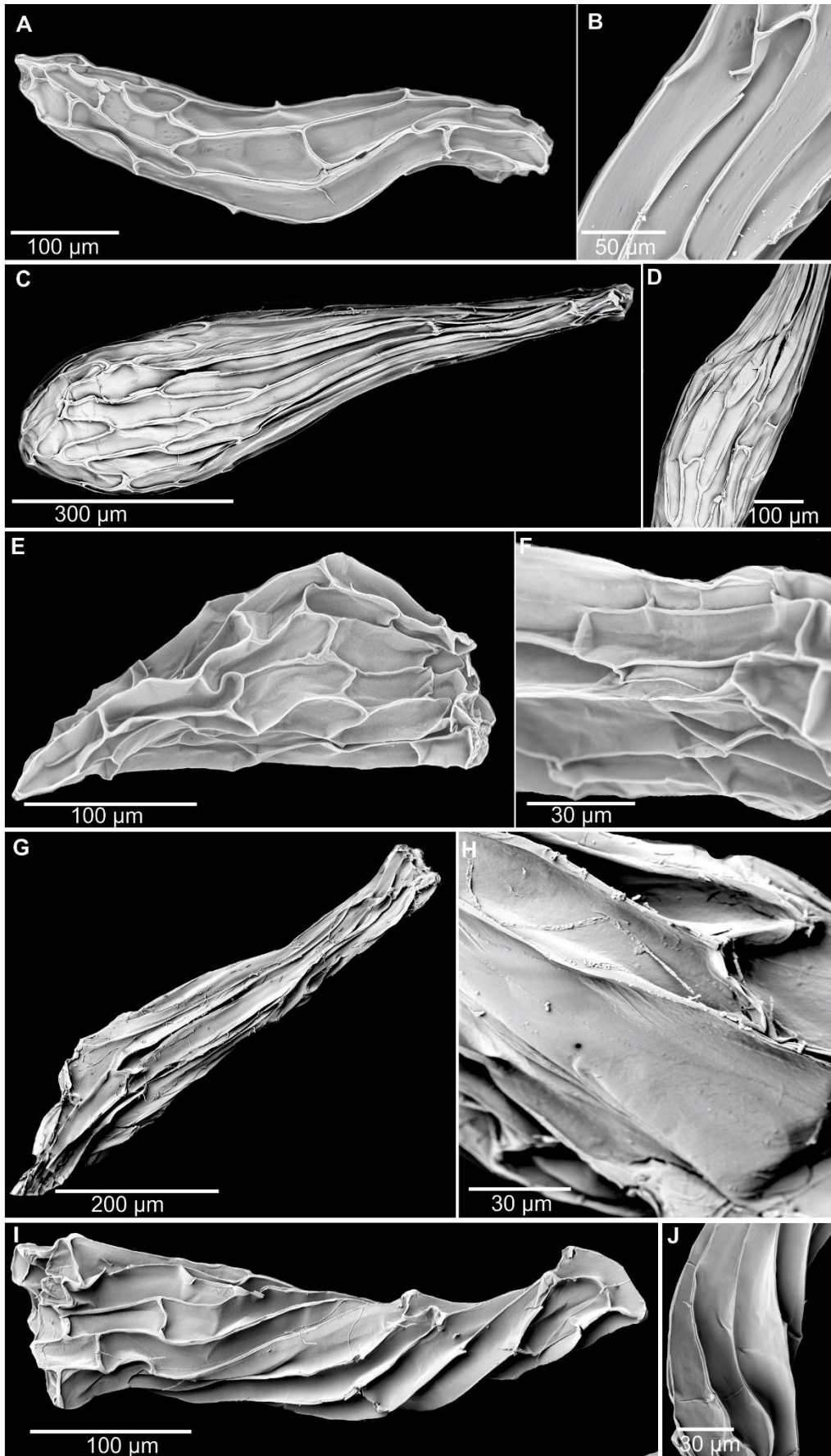
**Figure S14.** A, B - *Habenaria multipartita*, C, D - *Habenaria odontopetala*, E, F - *Habenaria paranaensis*, G, H - *Habenaria parvidens*, I, J - *Habenaria pectinate*,



**Figure S15.** A, B - *Habenaria plantaginea*, C, D - *Habenaria plurifoliata*, E, F - *Habenaria pterocarpa*, G, H - *Habenaria pumila*,

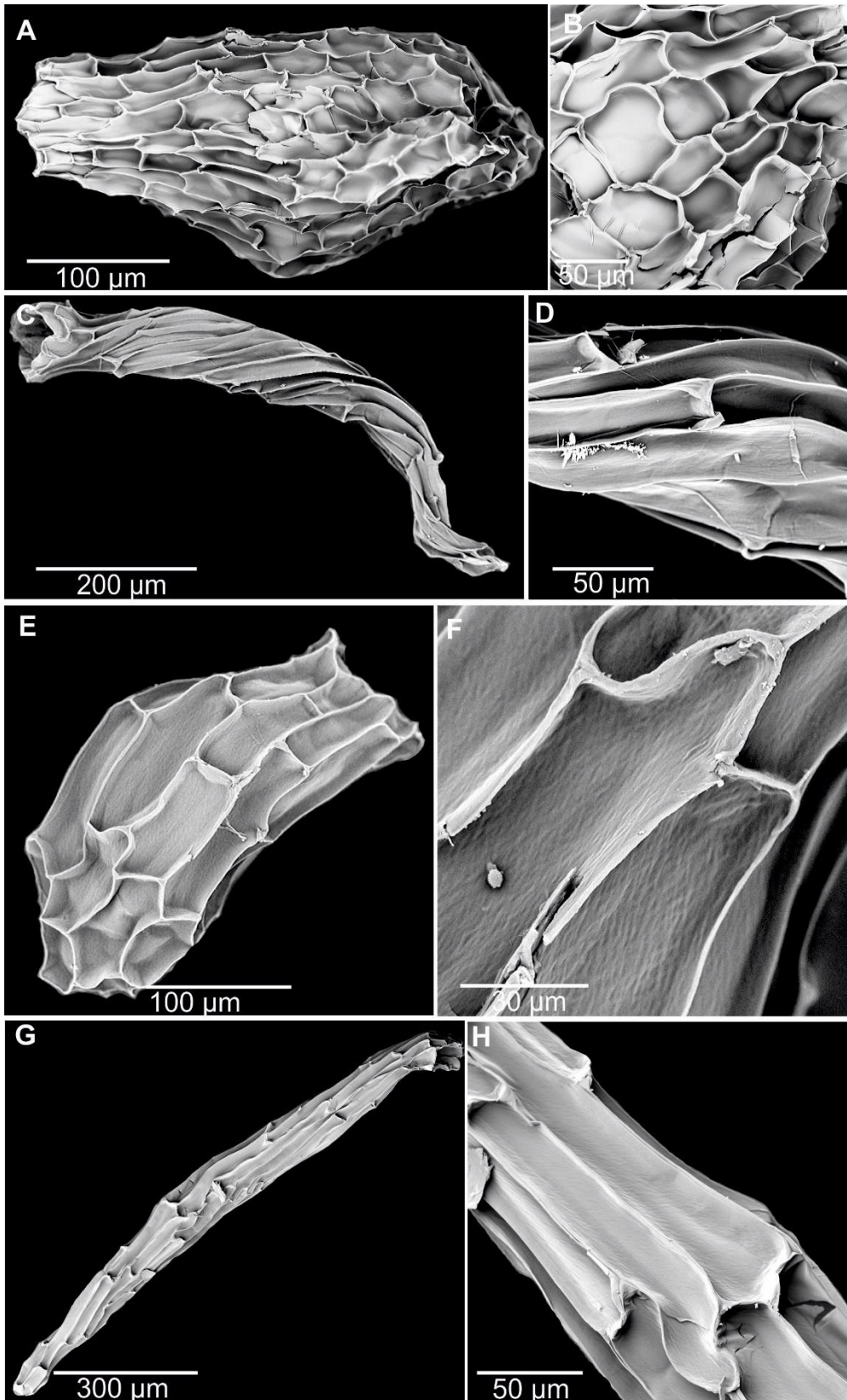


**Figura S16.** A, B - *Habenaria reichenbachiana*, C, D - *Habenaria repens*, E, F - *Habenaria retusa*, G, H - *Habenaria rhodocheila*, I, J - *Habenaria rumphii*,

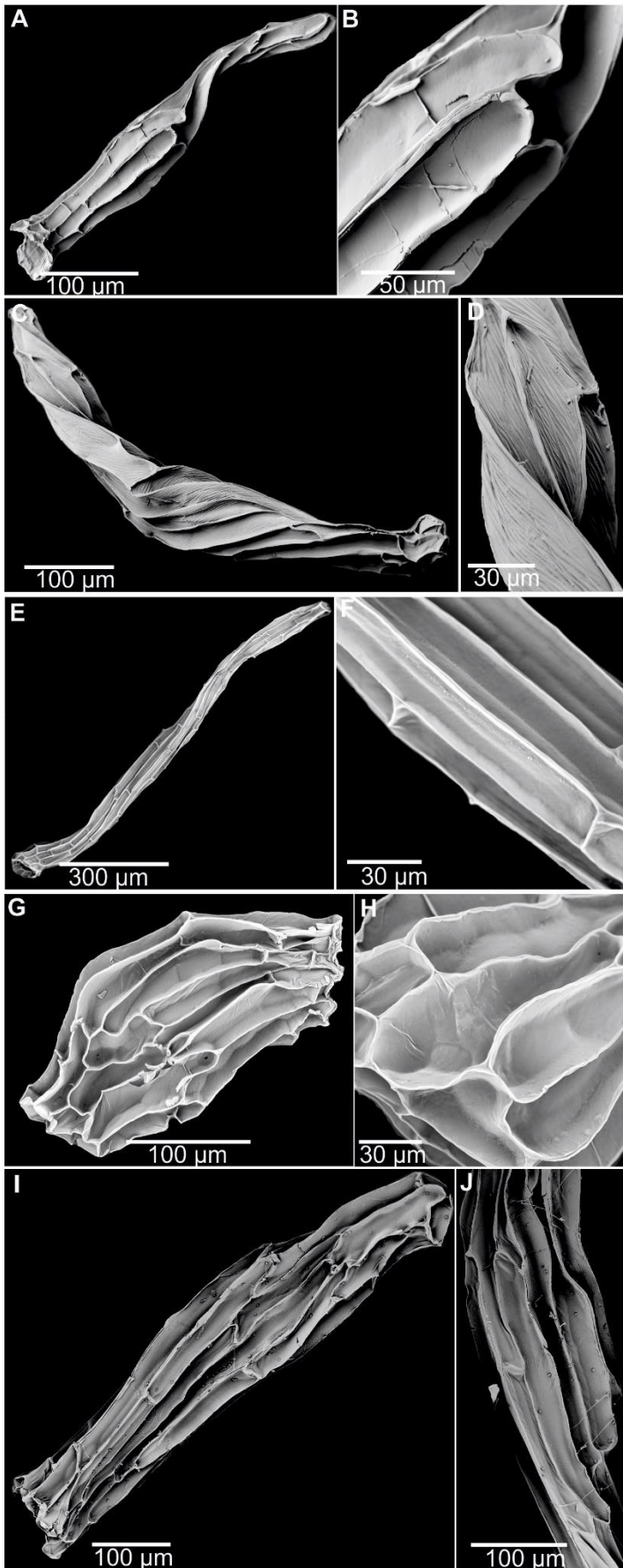




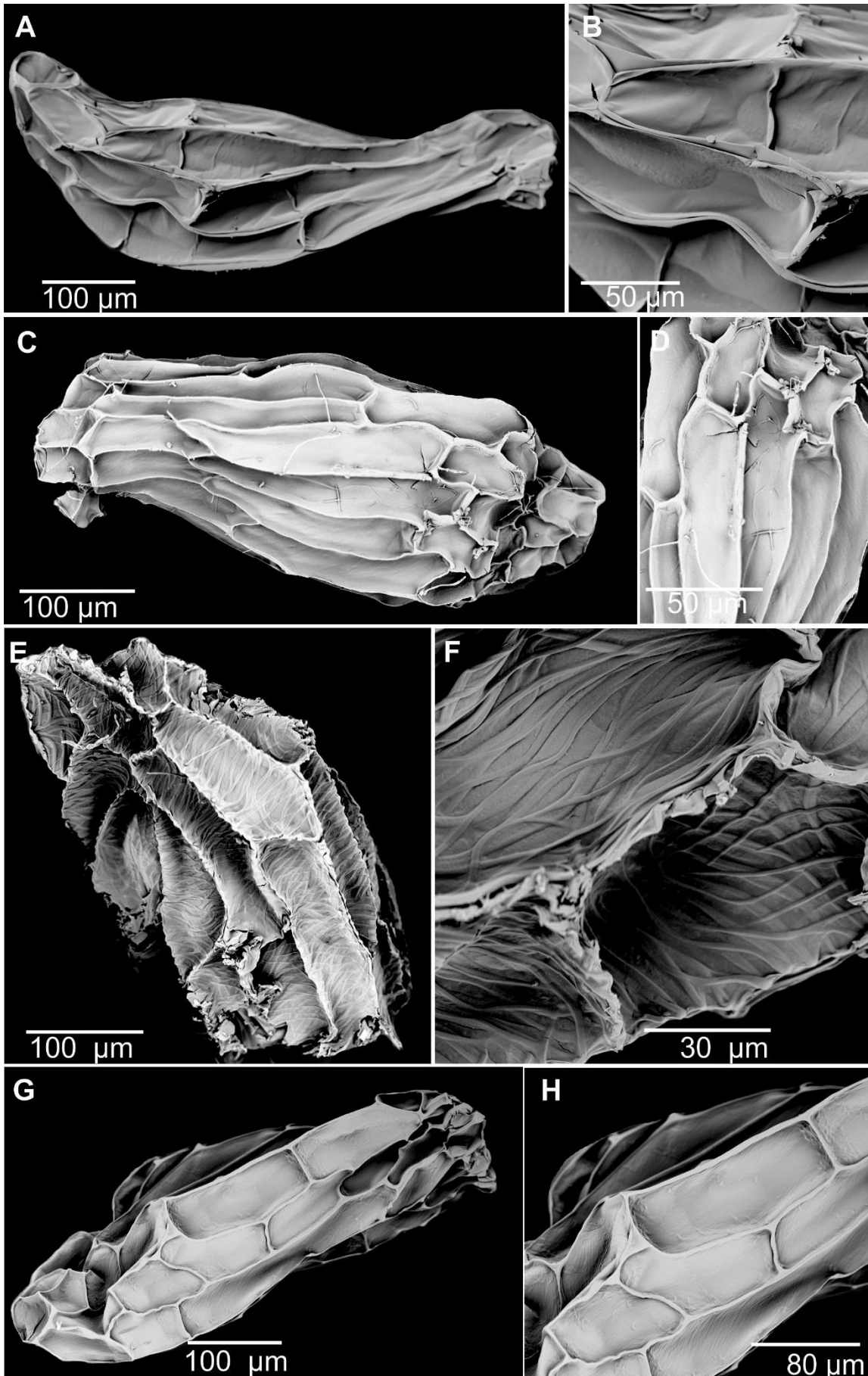
**Figure S17.** A, B - *Habenaria sagittifera*, C, D - *Habenaria secunda*, E, F - *Habenaria setacea*, G, H - *Habenaria strictissima*,



**Figure S18.** A, B - *Habenaria stylites*, C, D - *Habenaria subpubens*, E, F - *Habenaria superflua*, G, H - *Habenaria tetrapetala*, I, J - *Habenaria tosariensis*,



**Figure S19.** A, B - *Habenaria trachypetala*, C, D - *Habenaria tridactyla*, E, F - *Habenaria tridactylites*, G, H - *Habenaria tridens*,



**Figure S20.** A, B - *Habenaria vaginata*, C, D - *Habenaria viridiflora*, E, F - *Herminium elisabethae*, G, H - *Herminium lanceum*,

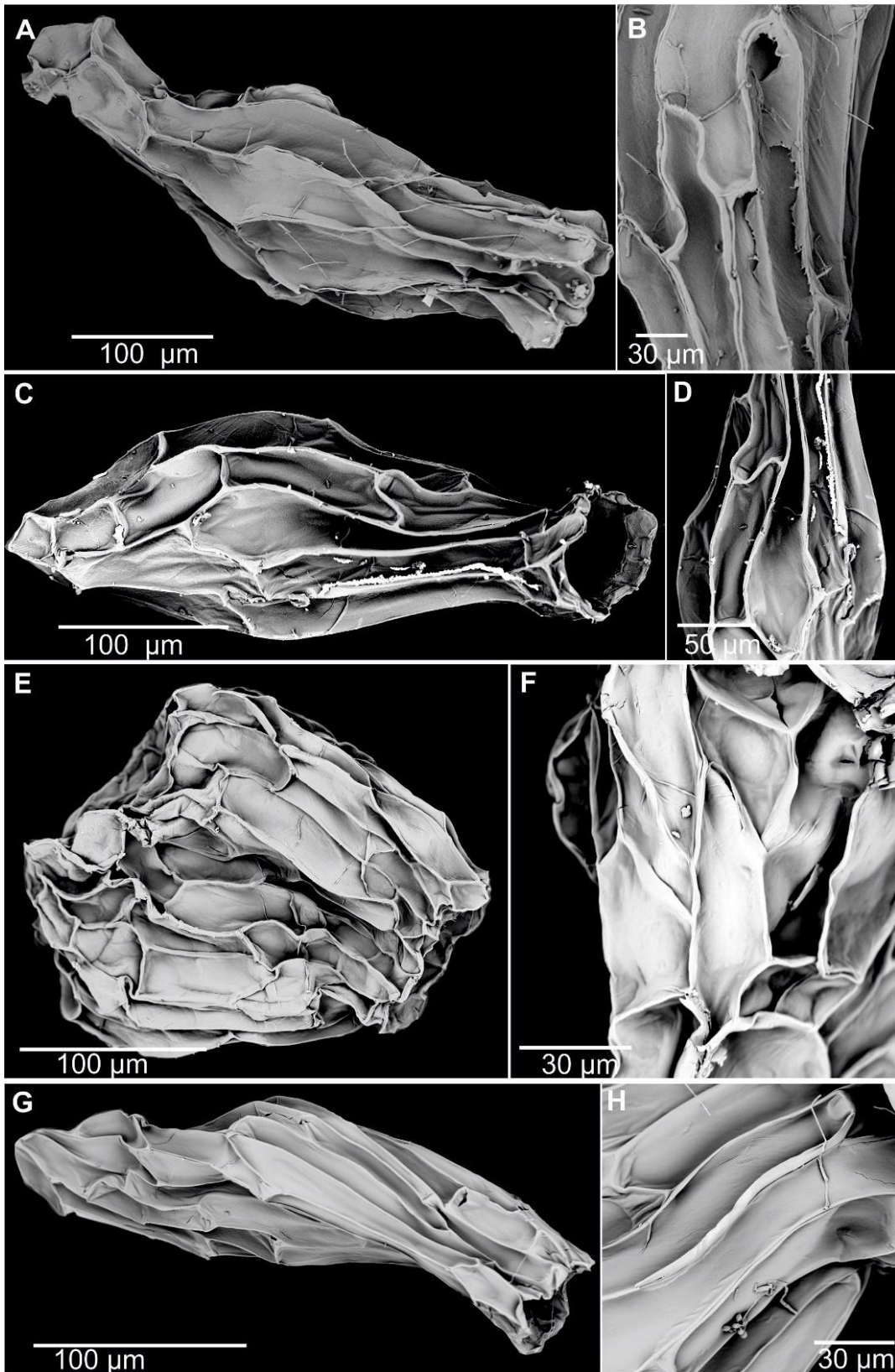
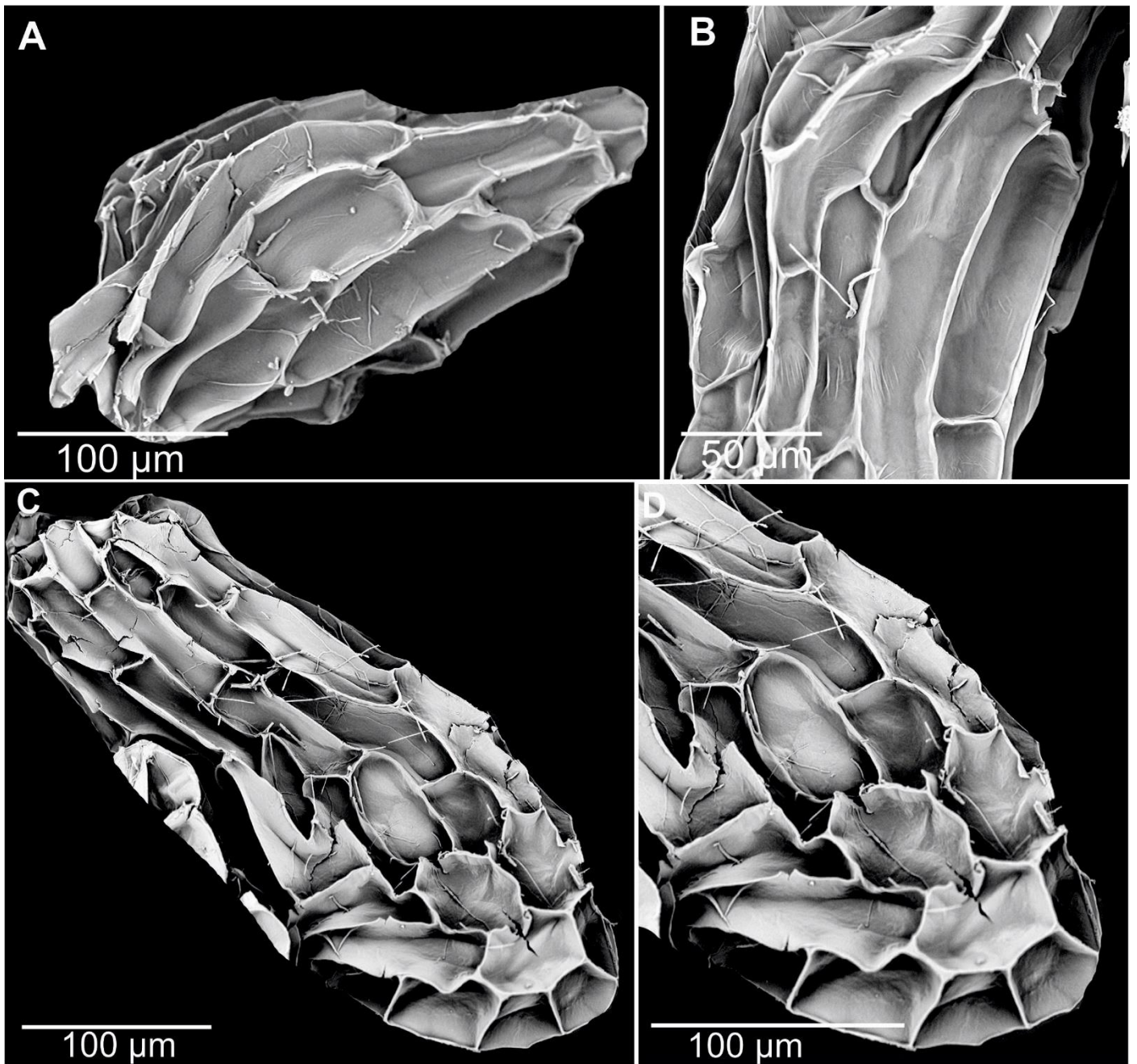
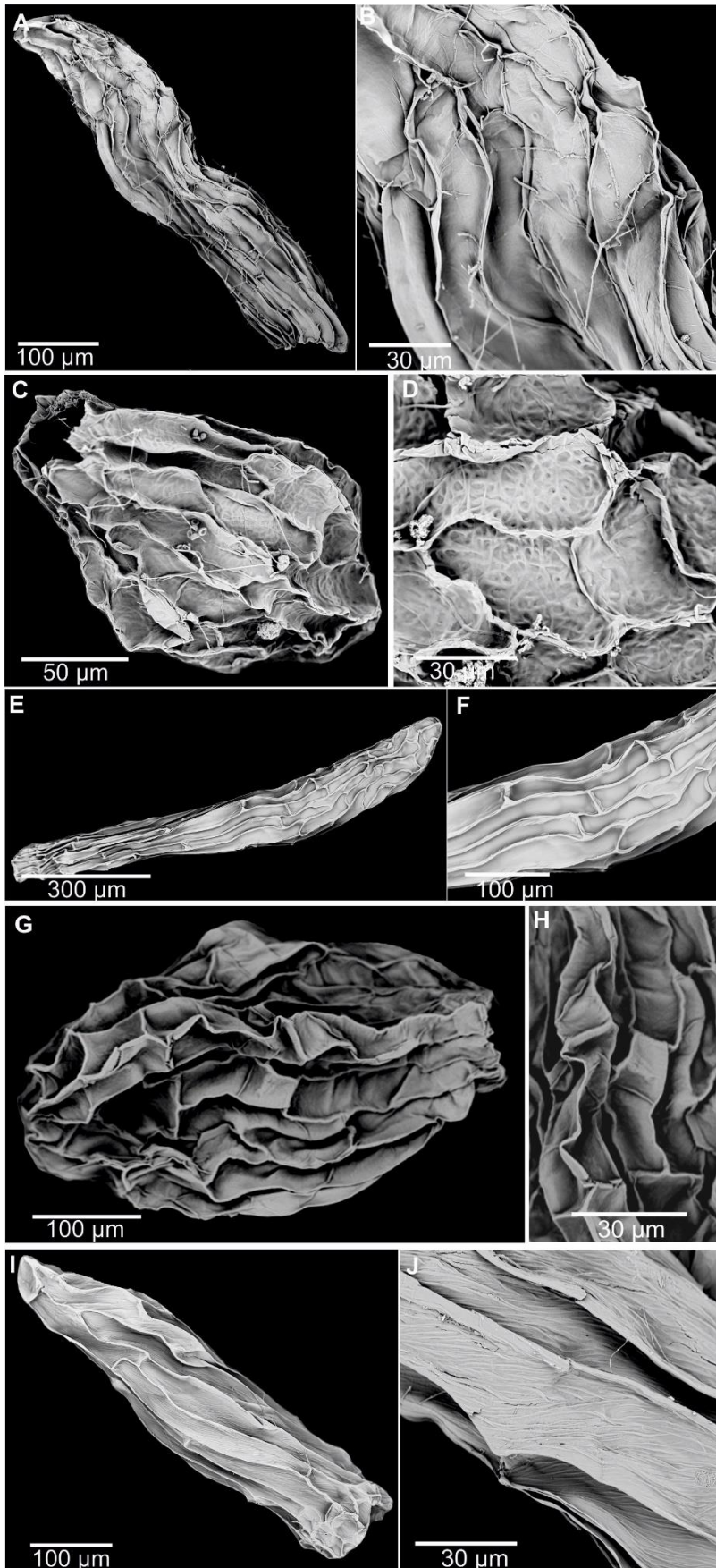


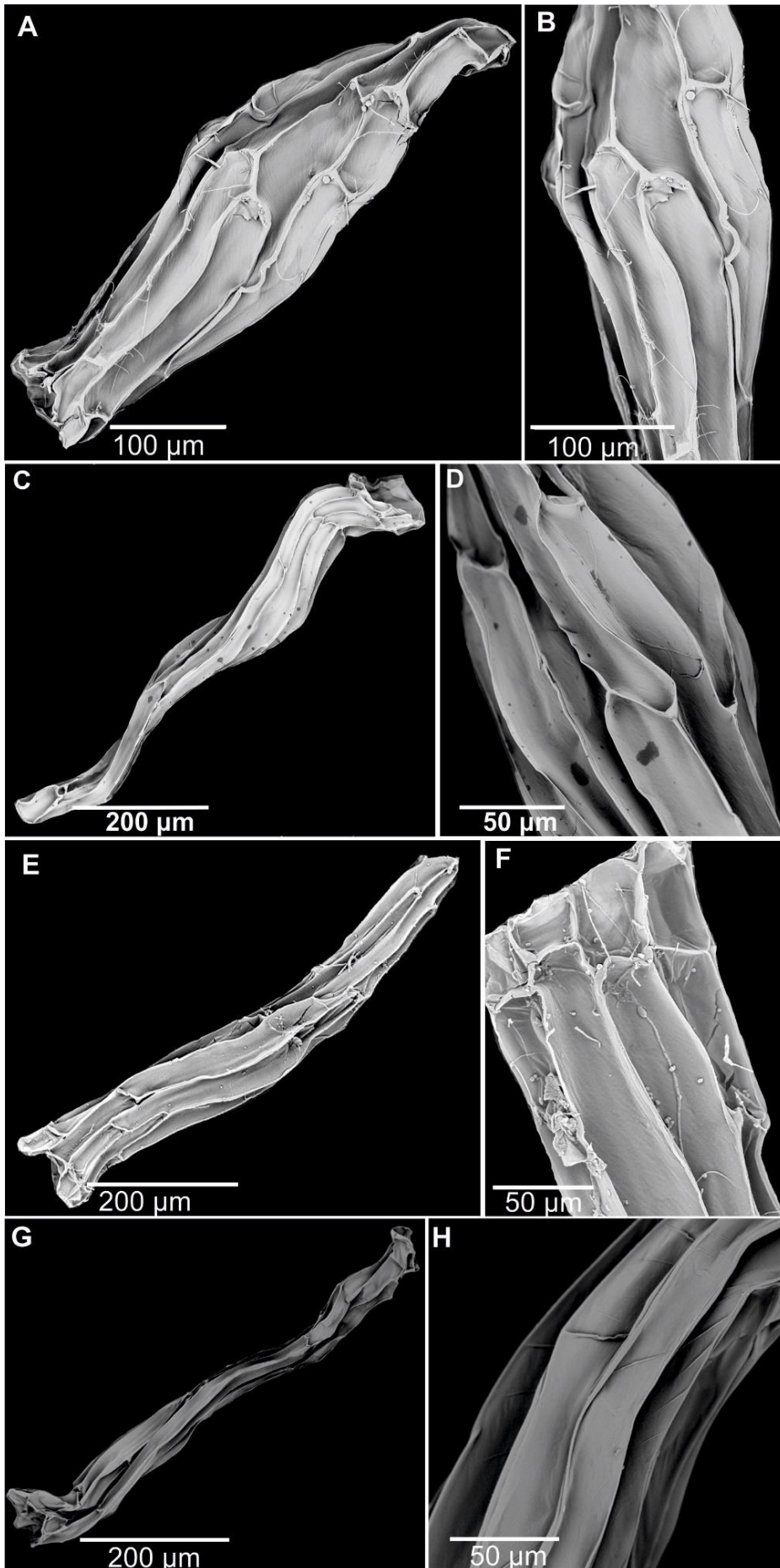
Figure S21. A, B - *Platanthera latilabris*, C, D - *Herminium monorchis*,



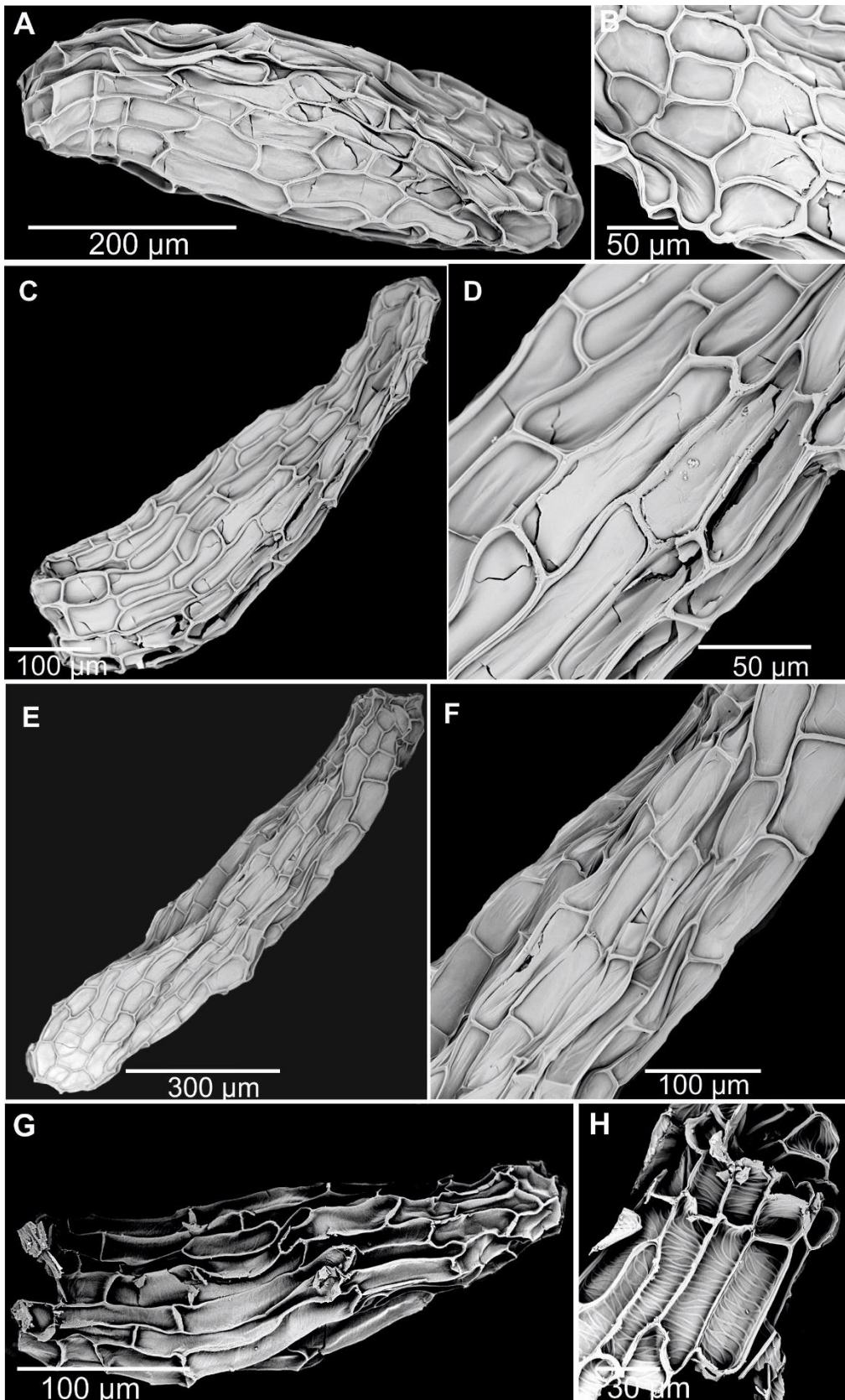
**Figure S22.** A, B - *Holothrix aphylla*, C, D - *Holothrix cernua*, E, F - *Neotinea maculata*, G, H - *Peristylus bulleyi*, I, J - *Peristylus cubitalis*,



**Figure S23.** A, B - *Peristylus densus*, C, D - *Peristylus goodyeroides*, E, F - *Peristylus monticola*, G, H - *Peristylus tentaculatus*,



**Figure S24.** A, B - *Platanthera clavellate*, C, D - *Platanthera dilatata*, E, F - *Platanthera elegans*, G, H - *Platanthera elongate*,





**Figure S25.** A, B - *Platanthera flava* var. *herbiola*, C, D - *Platanthera hookeri*, E, F - *Platanthera hyperborea*, G, H - *Platanthera obtusata*,

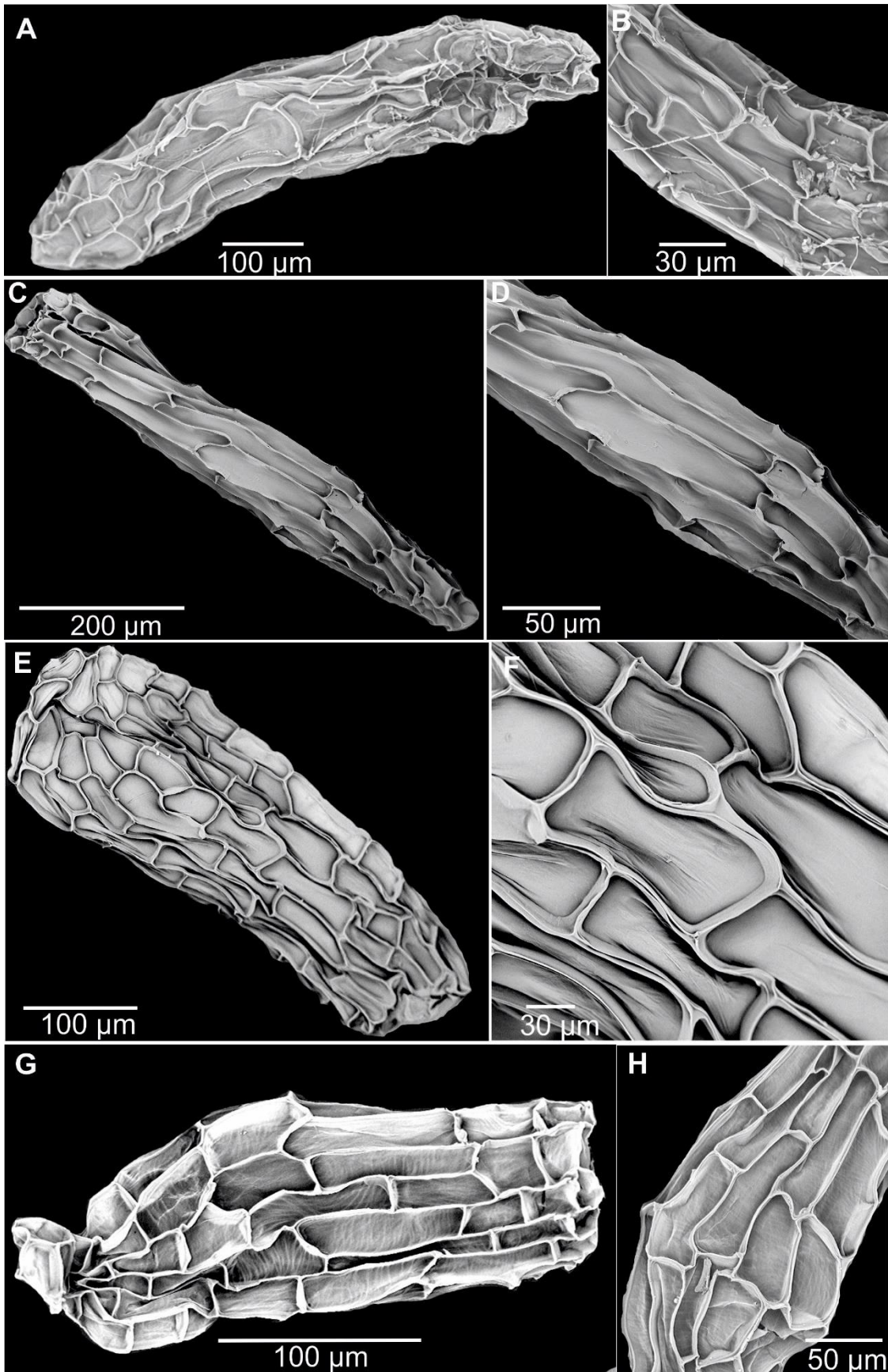


Figure S26. A, B - *Platanthera stricta*, C, D - *Piperia unalascensis*, E, F - *Pseudorchis albida*.

