

ANNEX S2. DIGITAL IMAGES OF THE TAXA STUDIED

Figure S1. A, B - *Androcorys pugioniformis*, C, D - *Bonatea pratensis*, E, F - *Bonatea speciosa*, G, H - *Chamorchis alpina*, I, J - *Gennaria diphylla*,

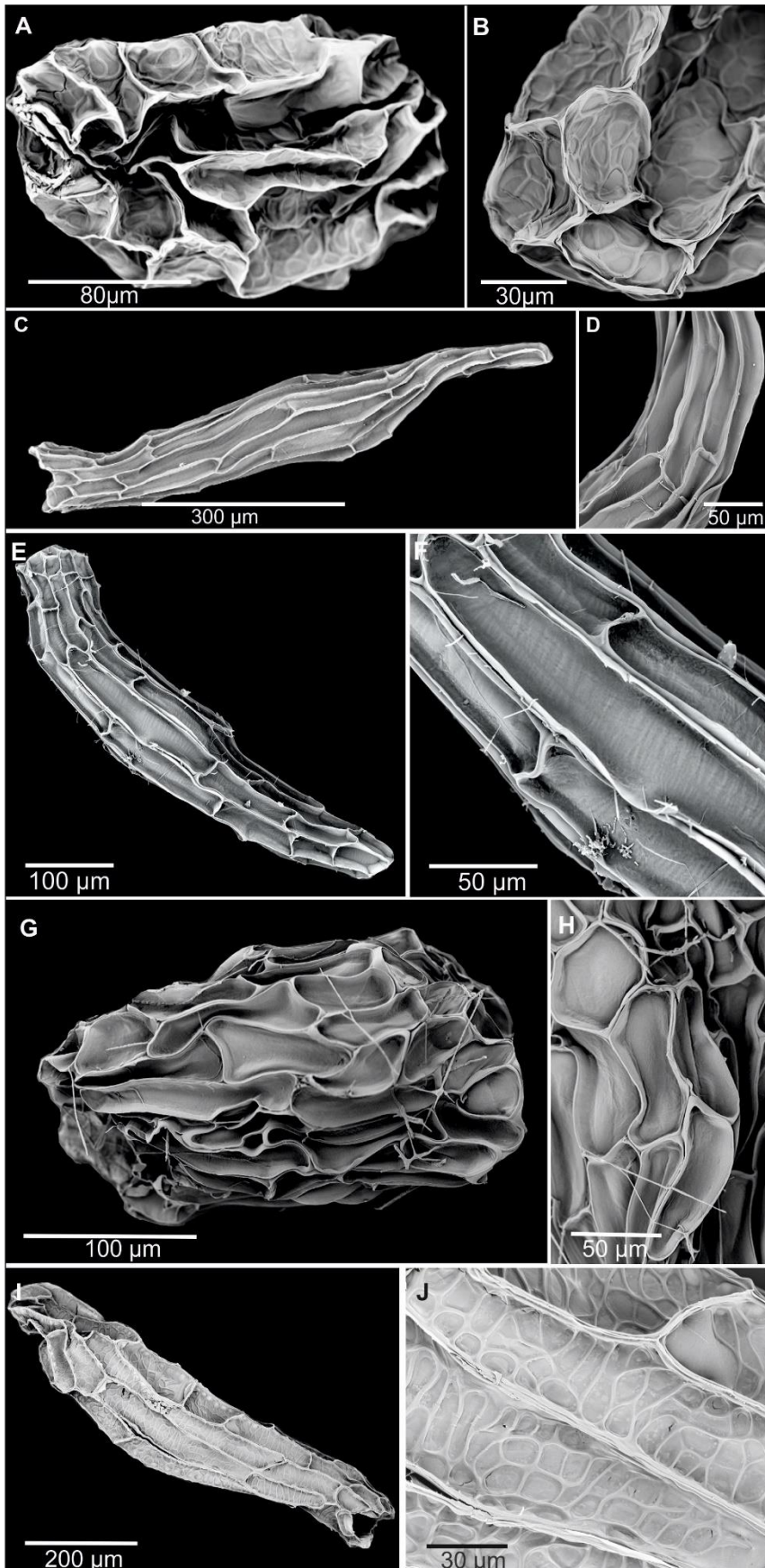


Figure S2. A, B - *Habenaria acuífera*, C, D - *Habenaria acuminata*, E, F - *Habenaria aitchisonii*, G, H - *Habenaria alagensis*, I, J - *Habenaria alata*,

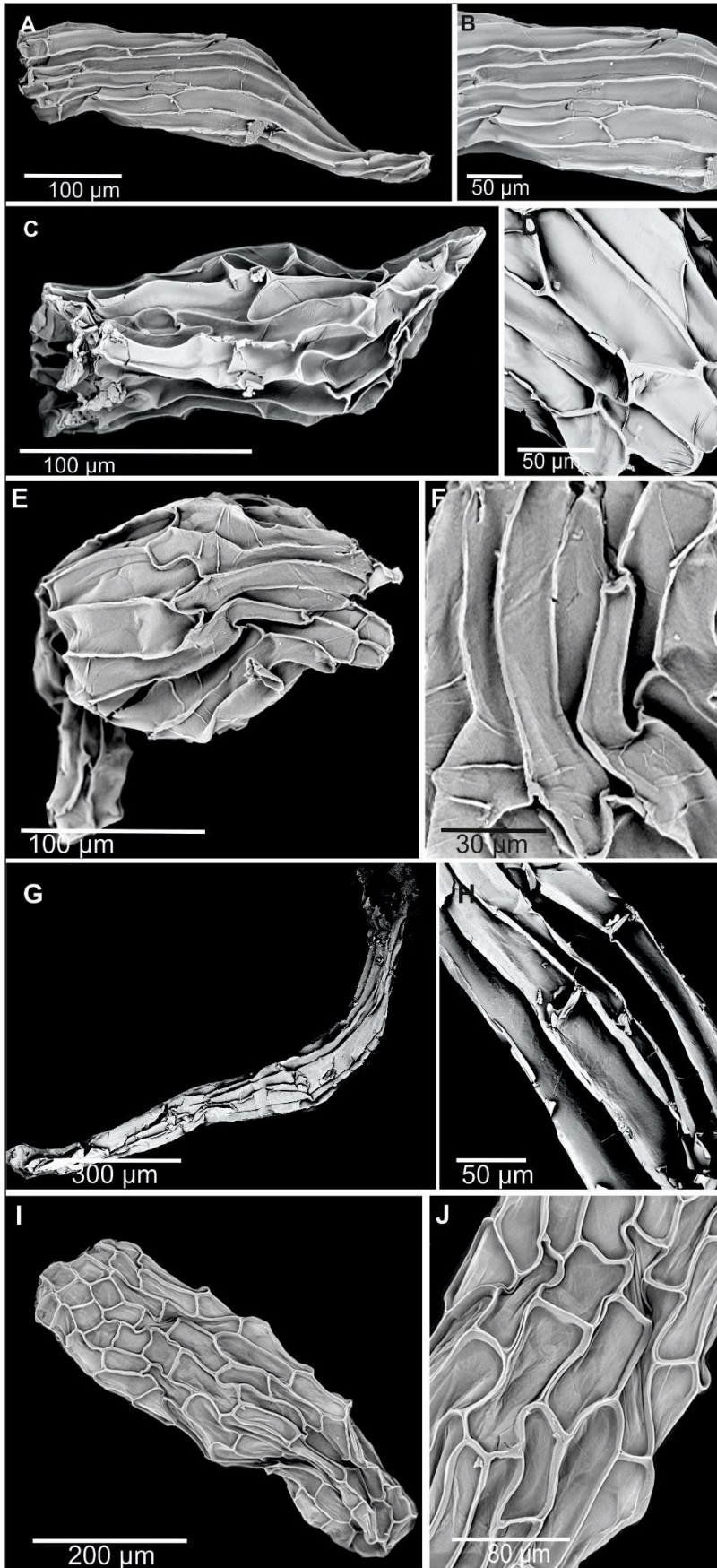


Figure S3. A, B - *Habenaria amplifolia*, C, D - *Habenaria aristulifera*, E, F - *Habenaria baeuerlenii*, G, H - *Habenaria bangii*, I, J - *Habenaria barbata*,



Figure S4. A, B - *Habenaria brachyphylla*, C, D - *Habenaria brevilabiata*, E, F - *Habenaria candolleana*, G, H - *Habenaria* cf. *arenaria*, I, J - *Habenaria* cf. *micrantha*,

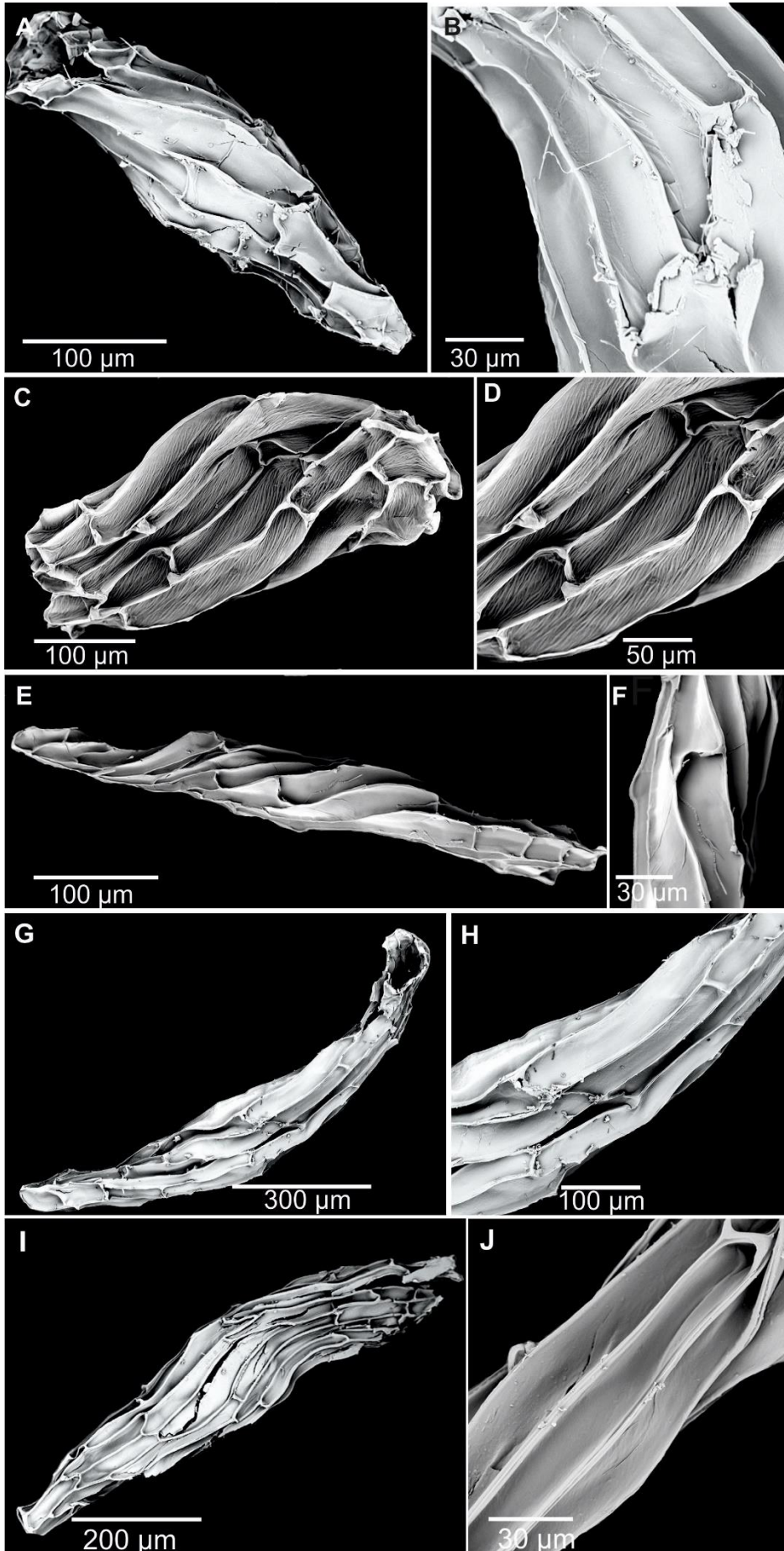


Figure S5. A, B - *Habenaria chlorotica*, C, D - *Habenaria clavata*, E, F - *Habenaria cordata*, G, H - *Habenaria cornuta*, I, J - *Habenaria crassifolia*,

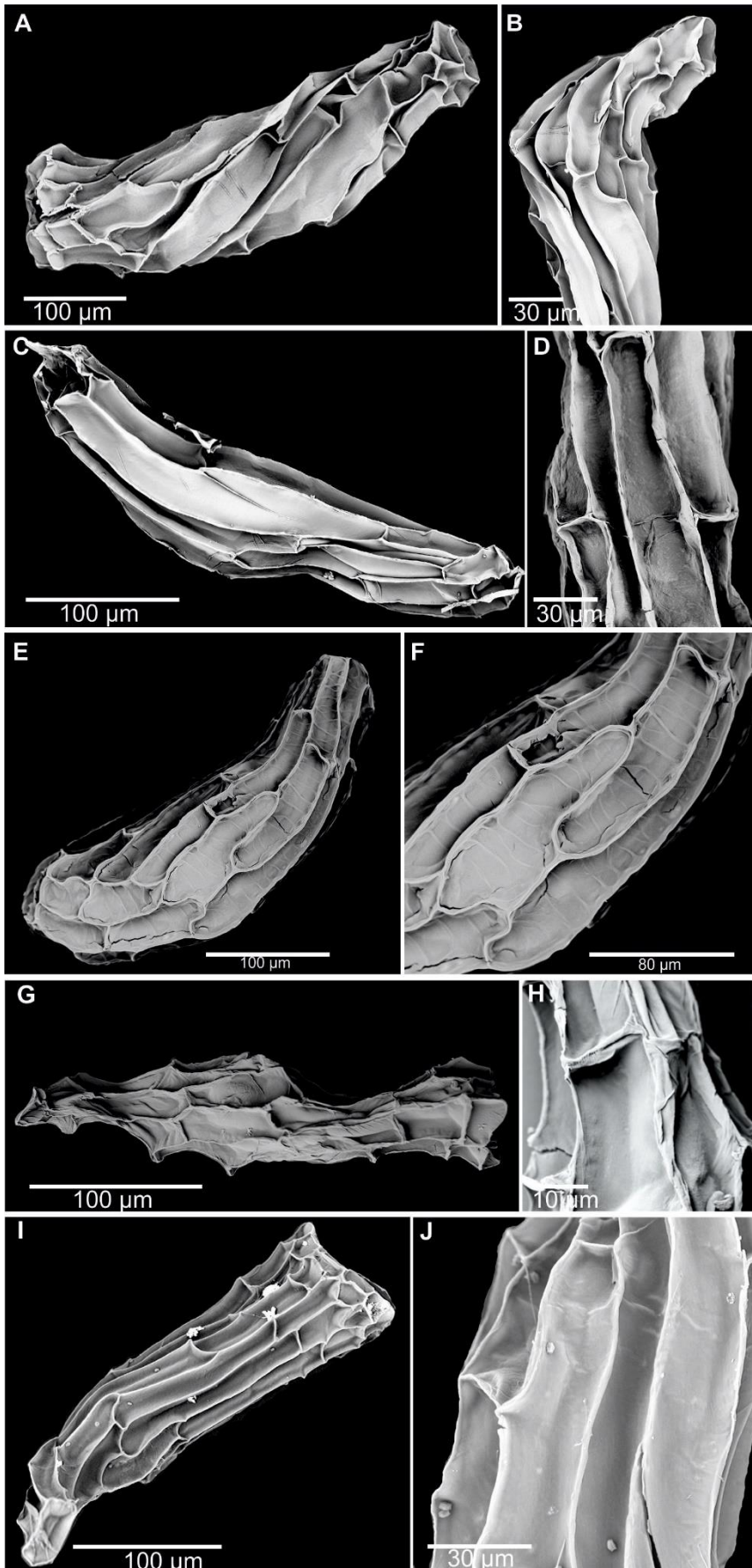


Figure S6. A, B - *Habenaria davidii*, C, D - *Habenaria delessertiana*, E, F - *Habenaria dentata*, G, H - *Habenaria diceras*,

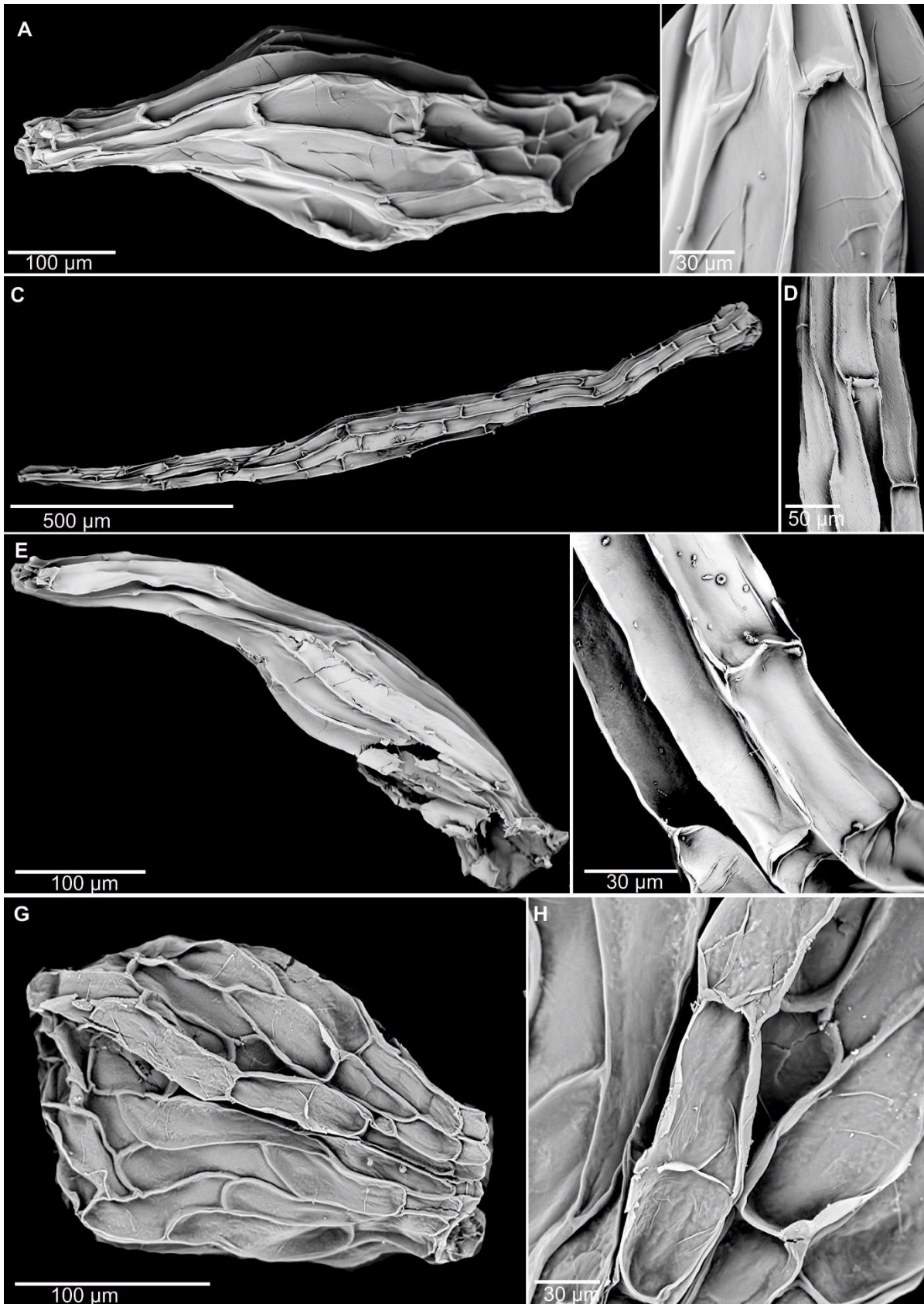


Figure S7. A, B - *Habenaria diphylla*, C, D - *Habenaria dives*, E, F - *Habenaria dracaenifolia*, G, H - *Habenaria dusenii*, I, J - *Habenaria dutrae*,

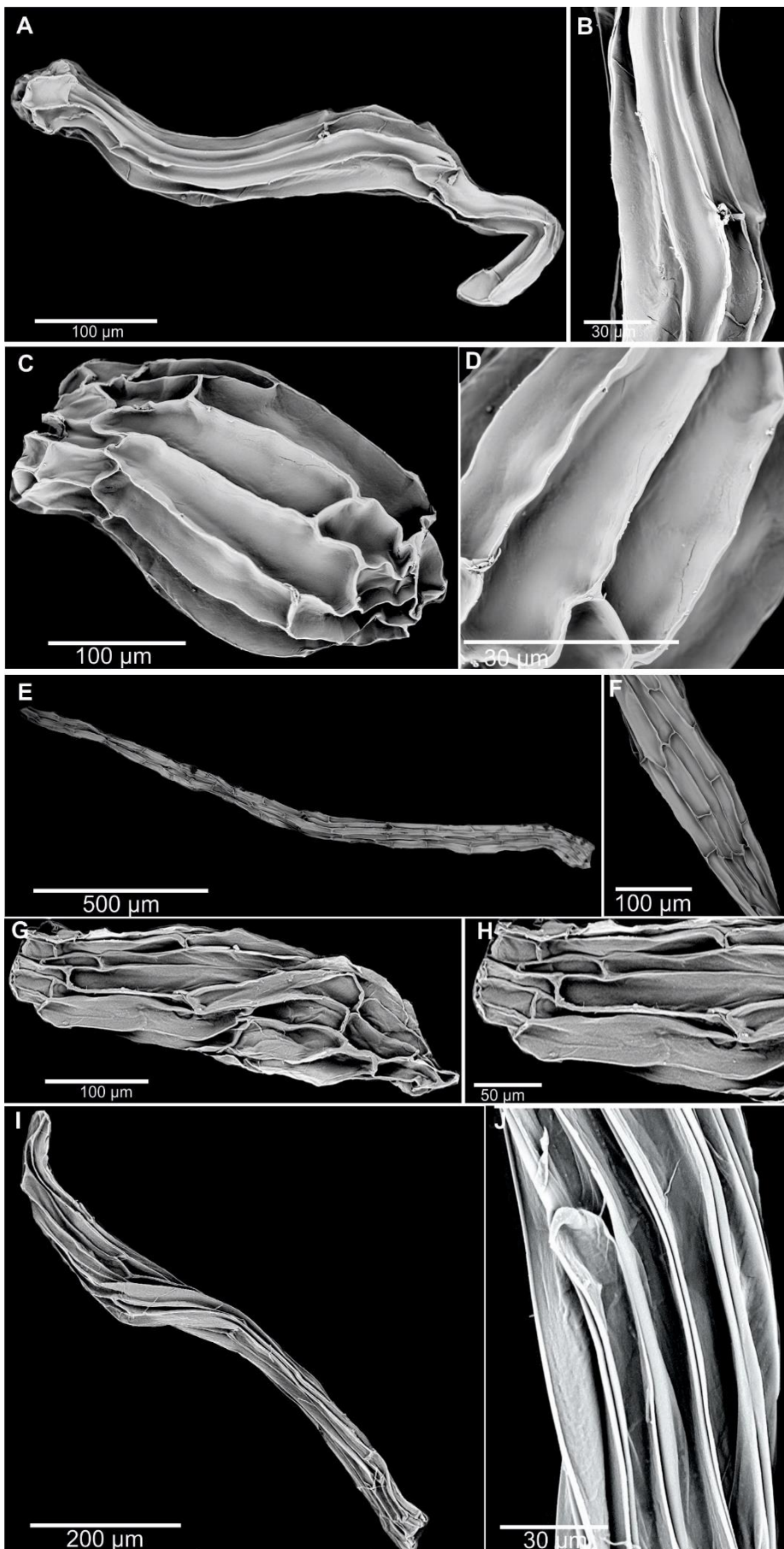


Figure S8. A, B - *Habenaria filicornis*, C, D - *Habenaria foliosa*, E, F - *Habenaria furcifera*, G, H - *Habenaria glaucifolia*, I, J - *Habenaria gollmeri*,

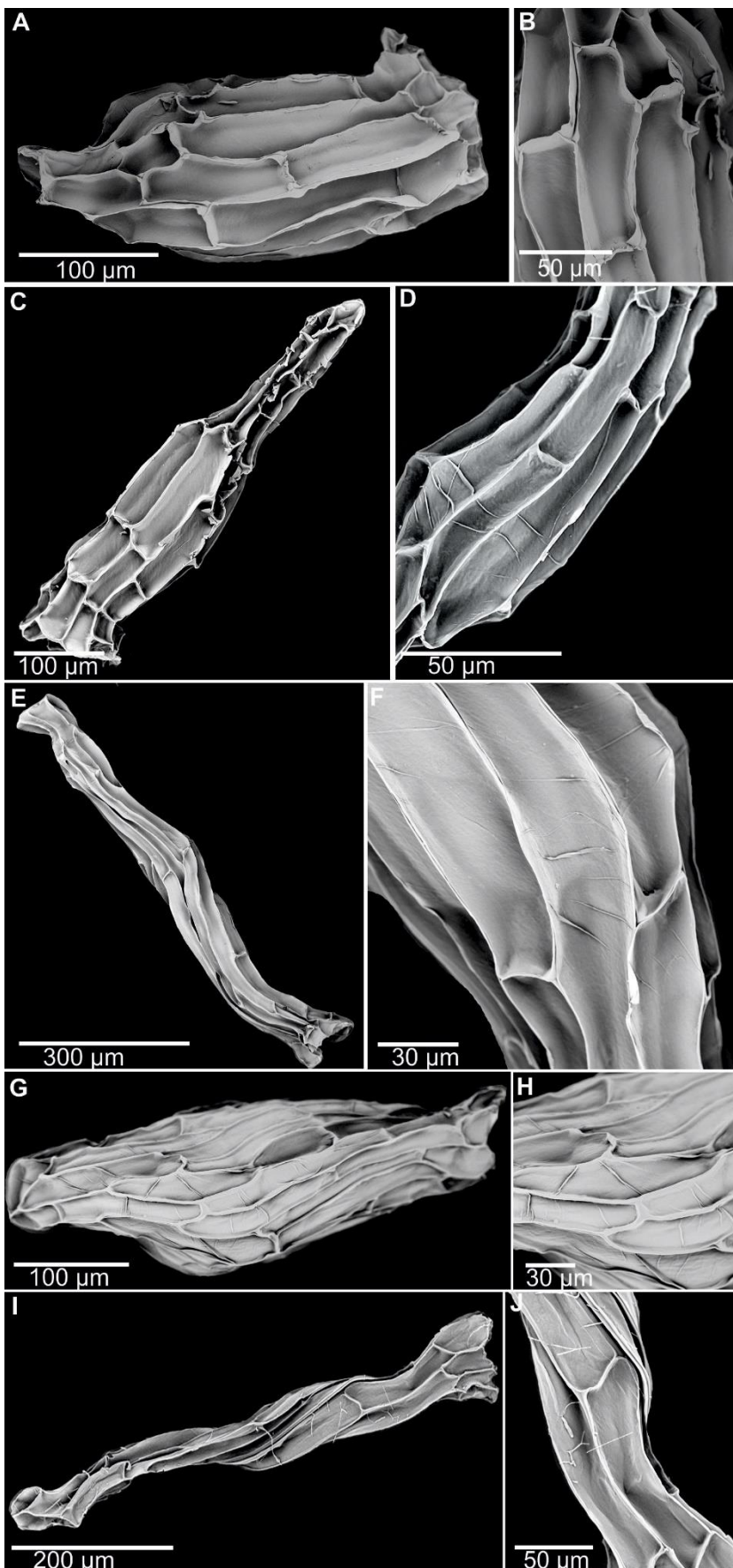


Figure S9. A, B - *Habenaria gourlieana*, C, D - *Habenaria goyazensis*, E, F - *Habenaria graciliscapa*, G, H - *Habenaria heyneana*,



Figure S10. A, B - *Habenaria hologlossa*, C, D - *Habenaria huillensis*, E, F - *Habenaria humidicola*,

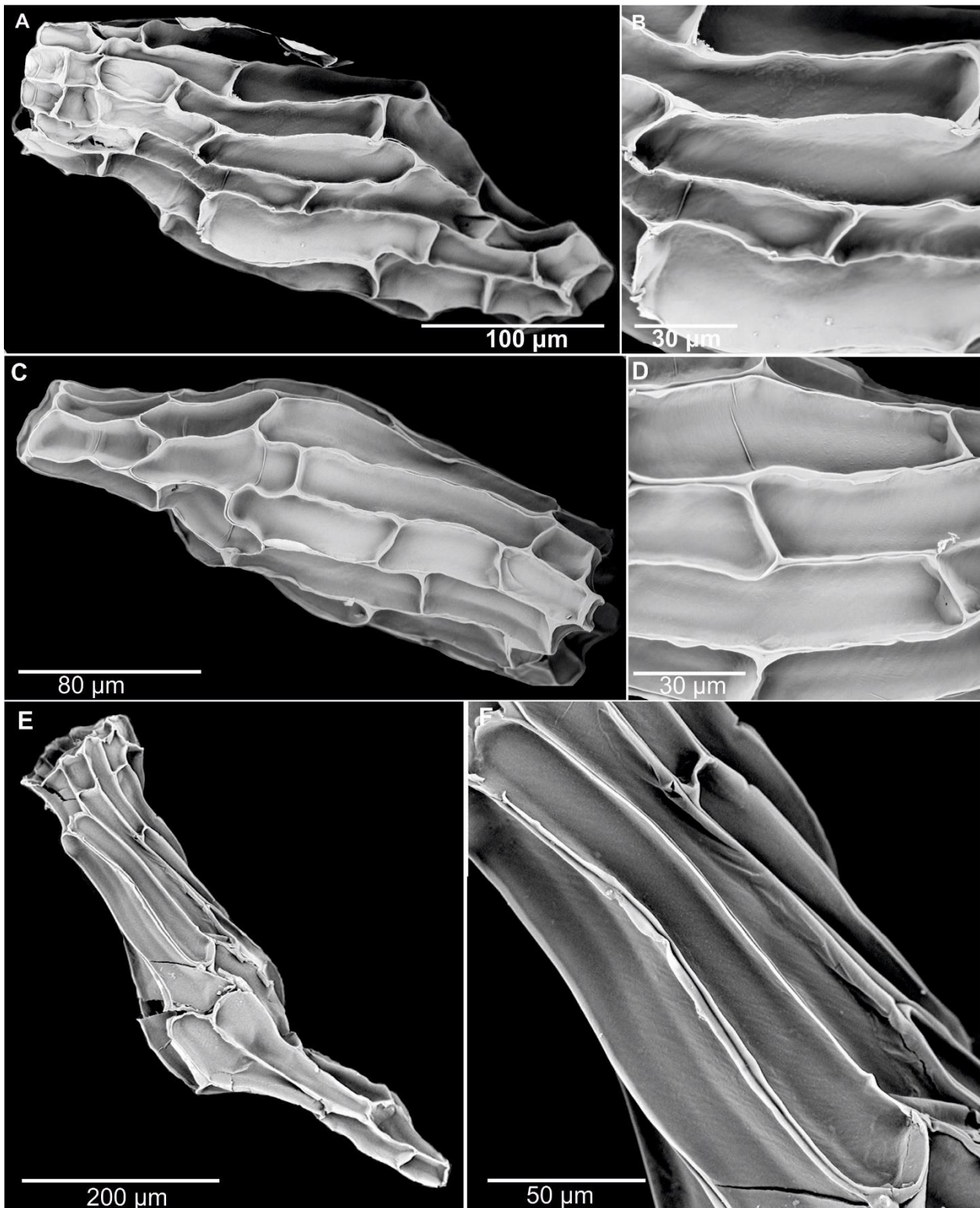


Figure S11. A, B - *Habenaria hystrix*, C, D - *Habenaria incurva*, E, F - *Habenaria josephensis*, G, H - *Habenaria kyimbilae*,

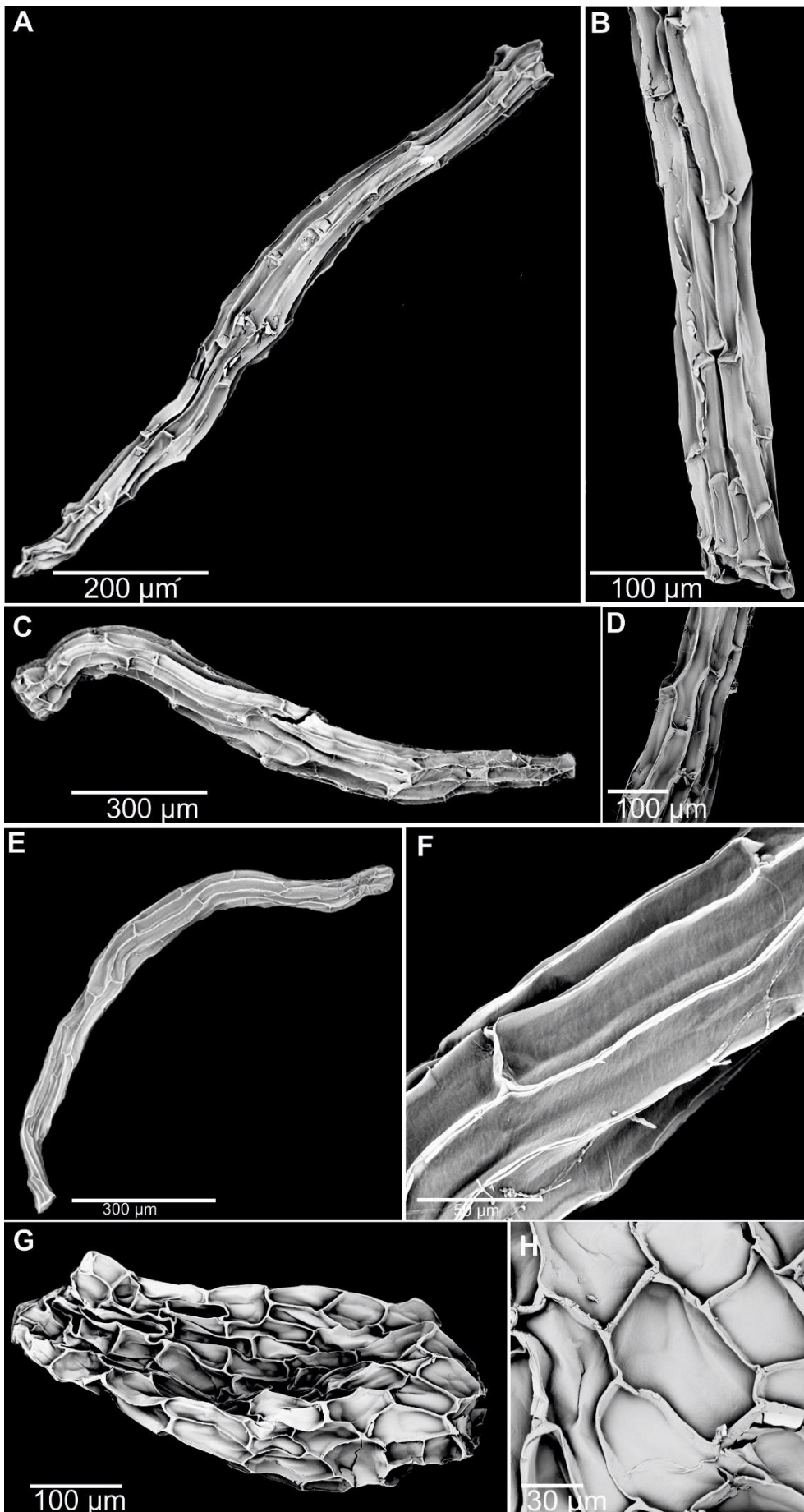


Figure S12. A, B - *Habenaria linderi*, C, D - *Habenaria longicauda*, E, F - *Habenaria magnirostris*, G, H - *Habenaria malacophylla*, I, J - *Habenaria malintana*,



Figure S13. A, B - *Habenaria marginata*, C, D - *Habenaria marquisensis*, E, F - *Habenaria medioflexa*,

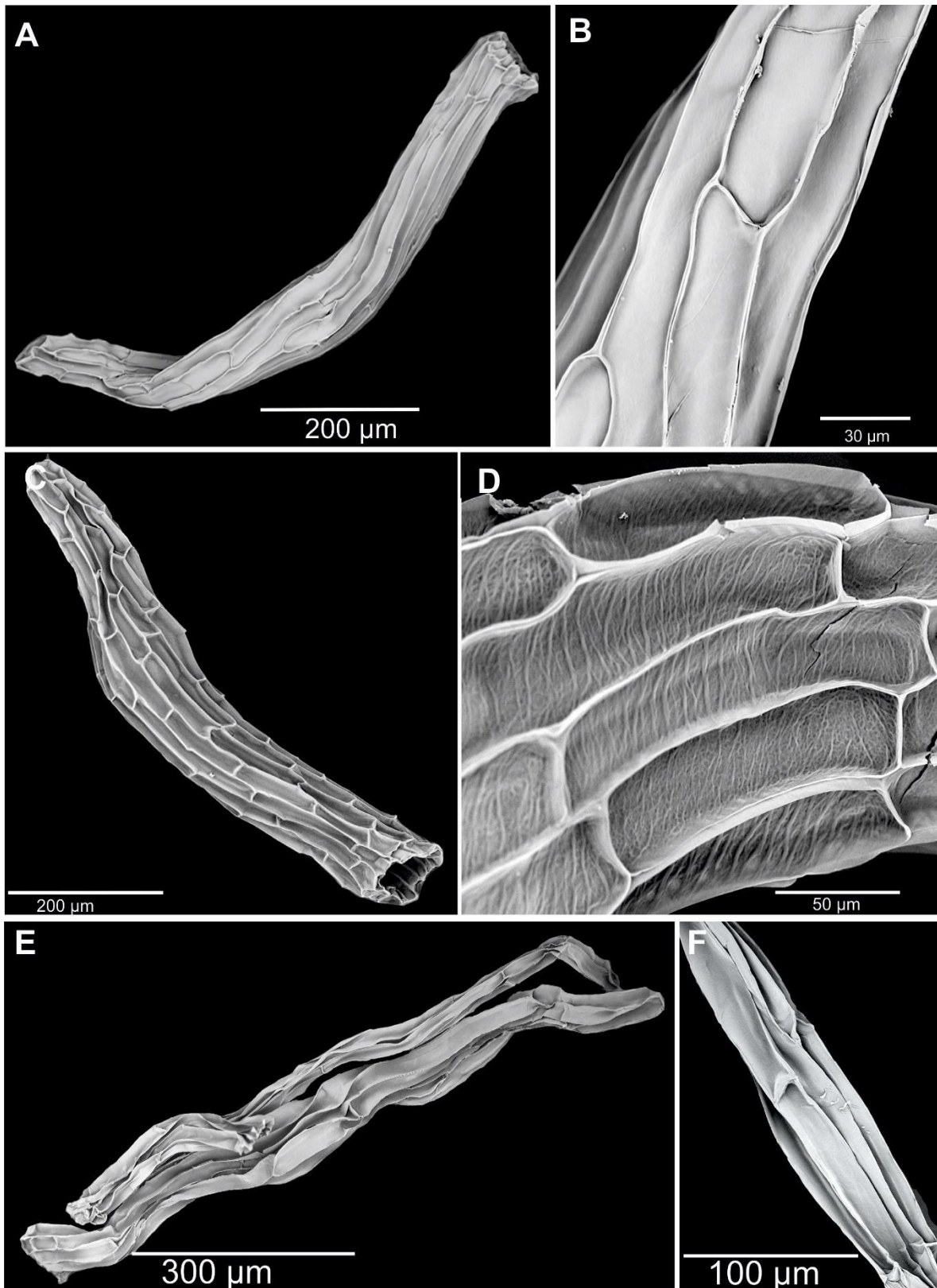


Figure S14. A, B - *Habenaria multipartita*, C, D - *Habenaria odontopetala*, E, F - *Habenaria paranaensis*, G, H - *Habenaria parvidens*, I, J - *Habenaria pectinate*,

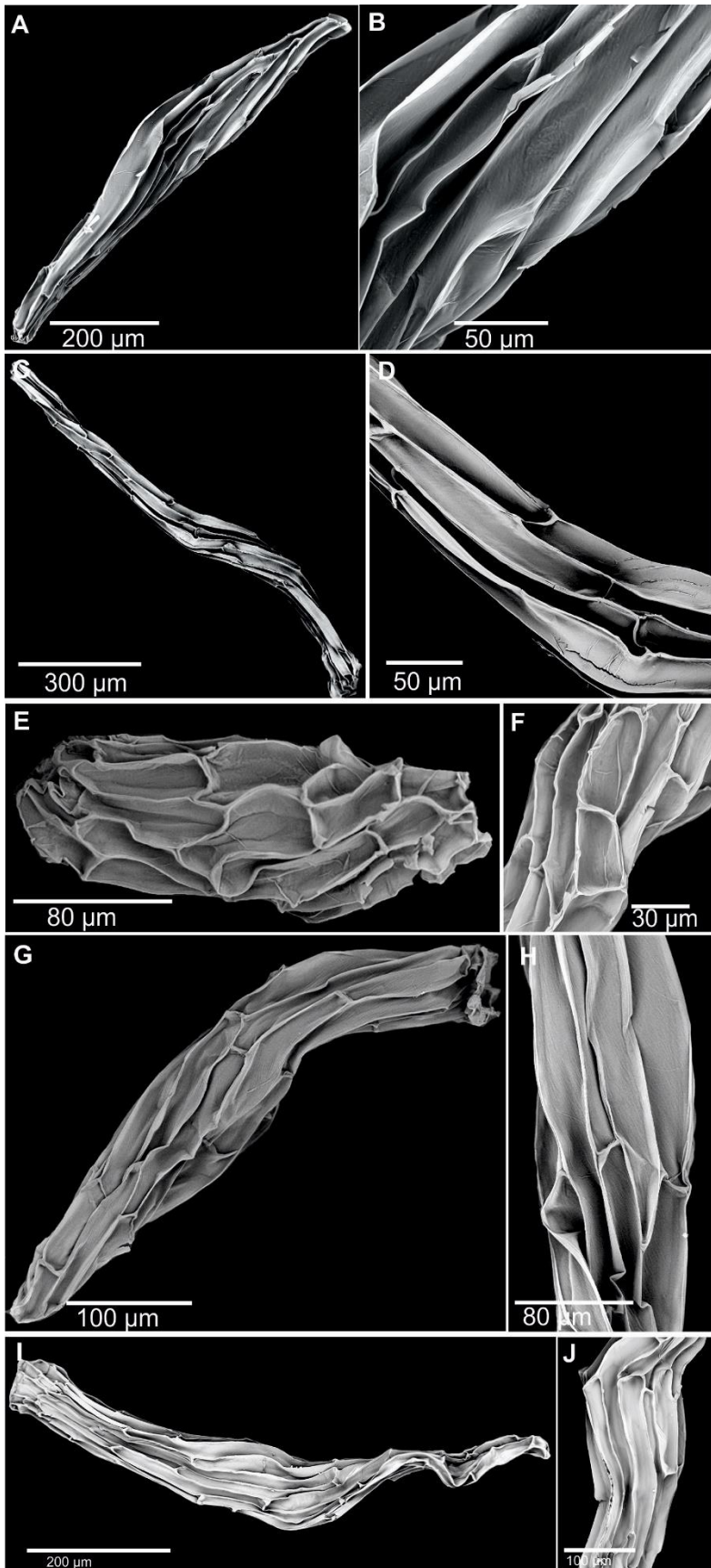


Figure S15. A, B - *Habenaria plantaginea*, C, D - *Habenaria plurifoliata*, E, F - *Habenaria pterocarpa*, G, H - *Habenaria pumila*,

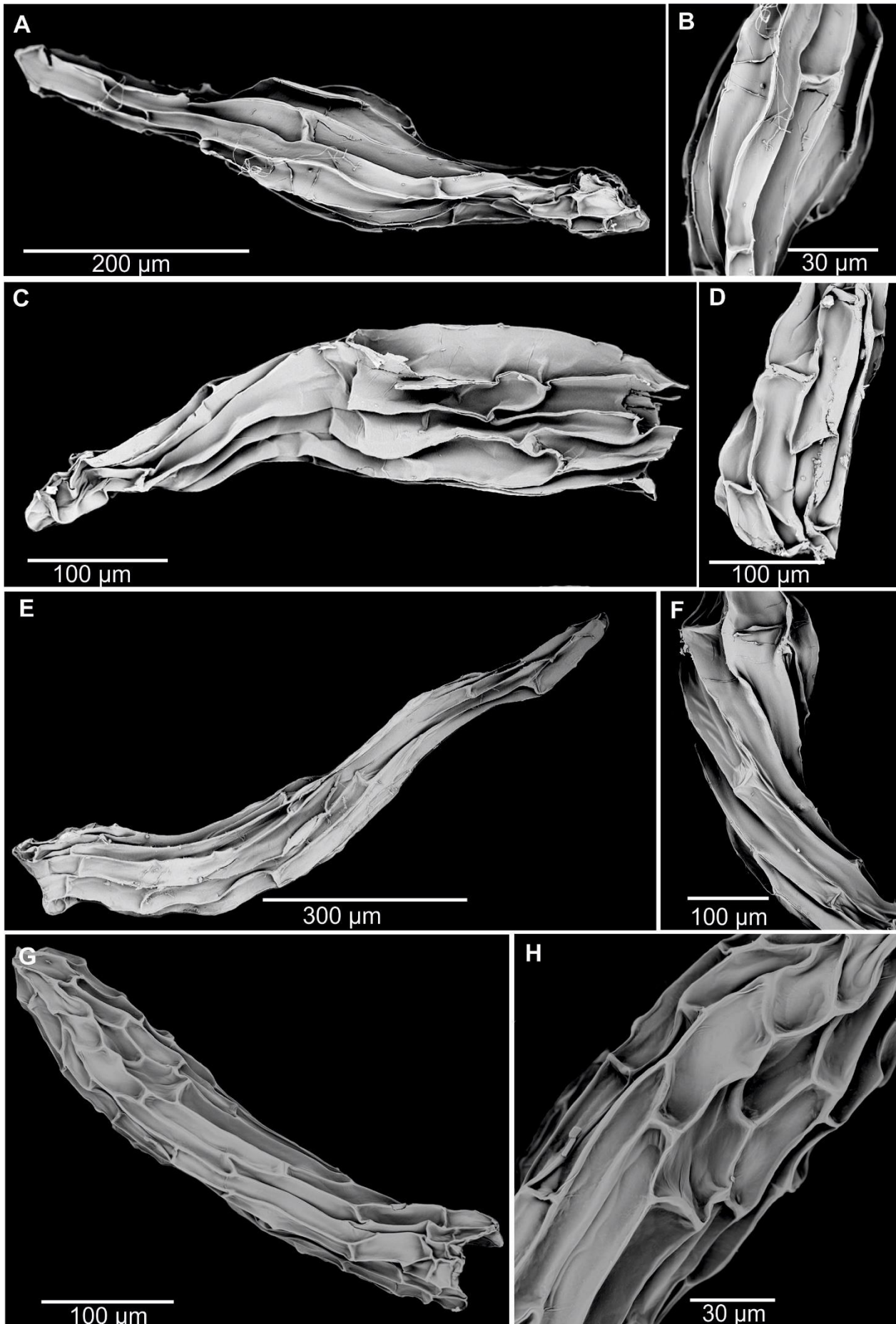


Figura S16. A, B - *Habenaria reichenbachiana*, C, D - *Habenaria repens*, E, F - *Habenaria retusa*, G, H - *Habenaria rhodocheila*, I, J - *Habenaria rumphii*,

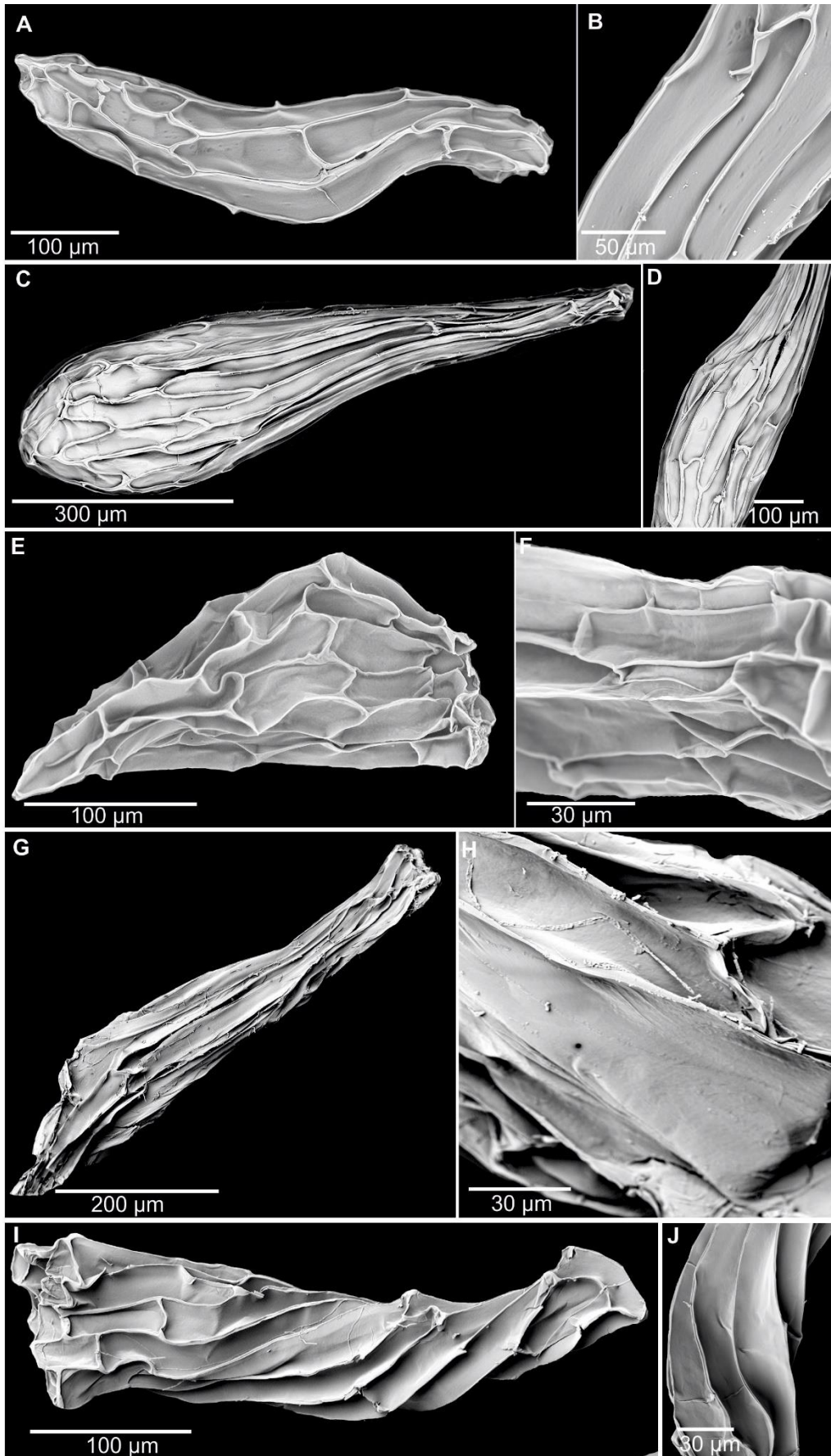


Figure S17. A, B - *Habenaria sagittifera*, C, D - *Habenaria secunda*, E, F - *Habenaria setacea*, G, H - *Habenaria strictissima*,

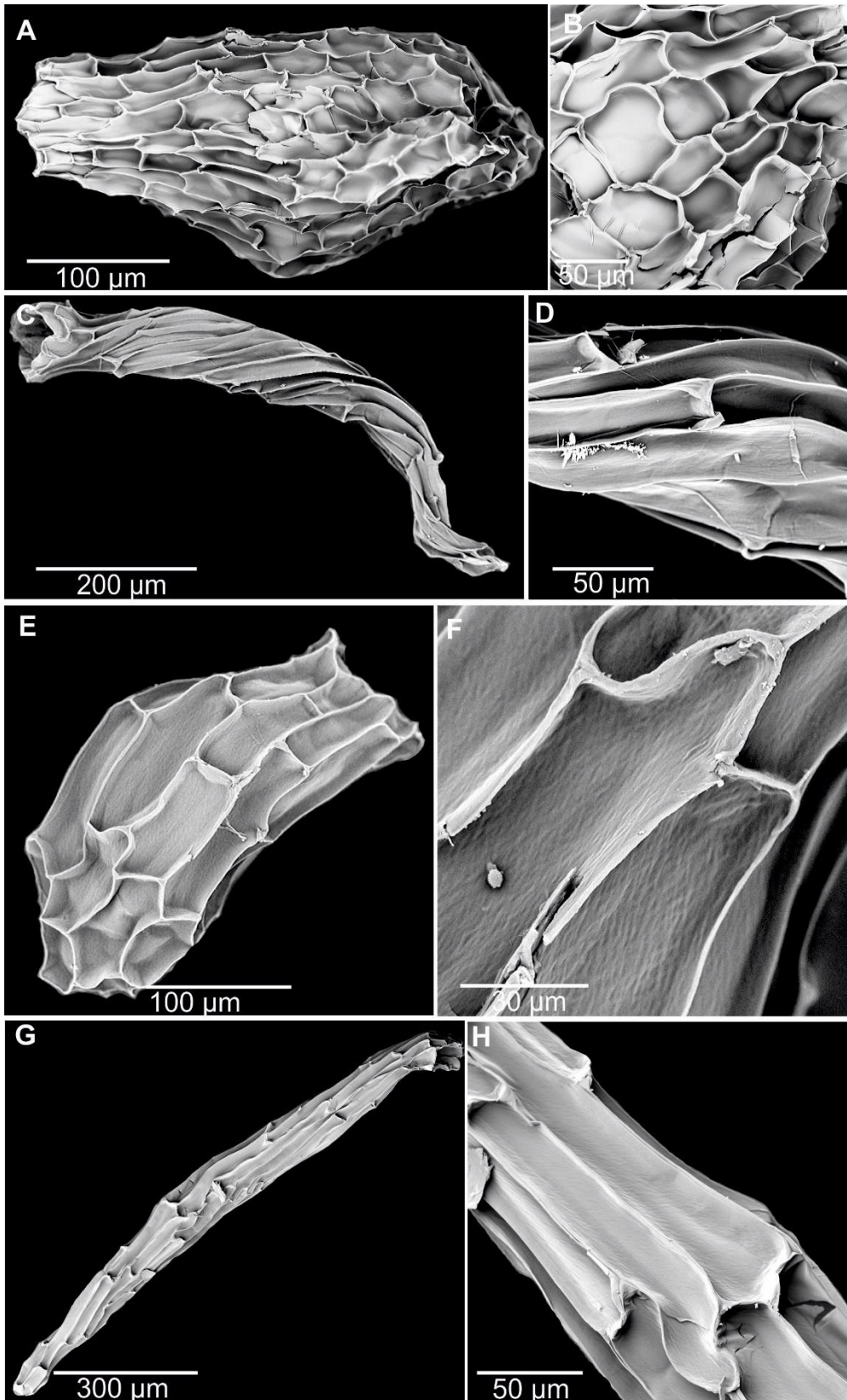


Figure S18. A, B - *Habenaria stylites*, C, D - *Habenaria subpubens*, E, F - *Habenaria superflua*, G, H - *Habenaria tetrapetala*, I, J - *Habenaria tosariensis*,

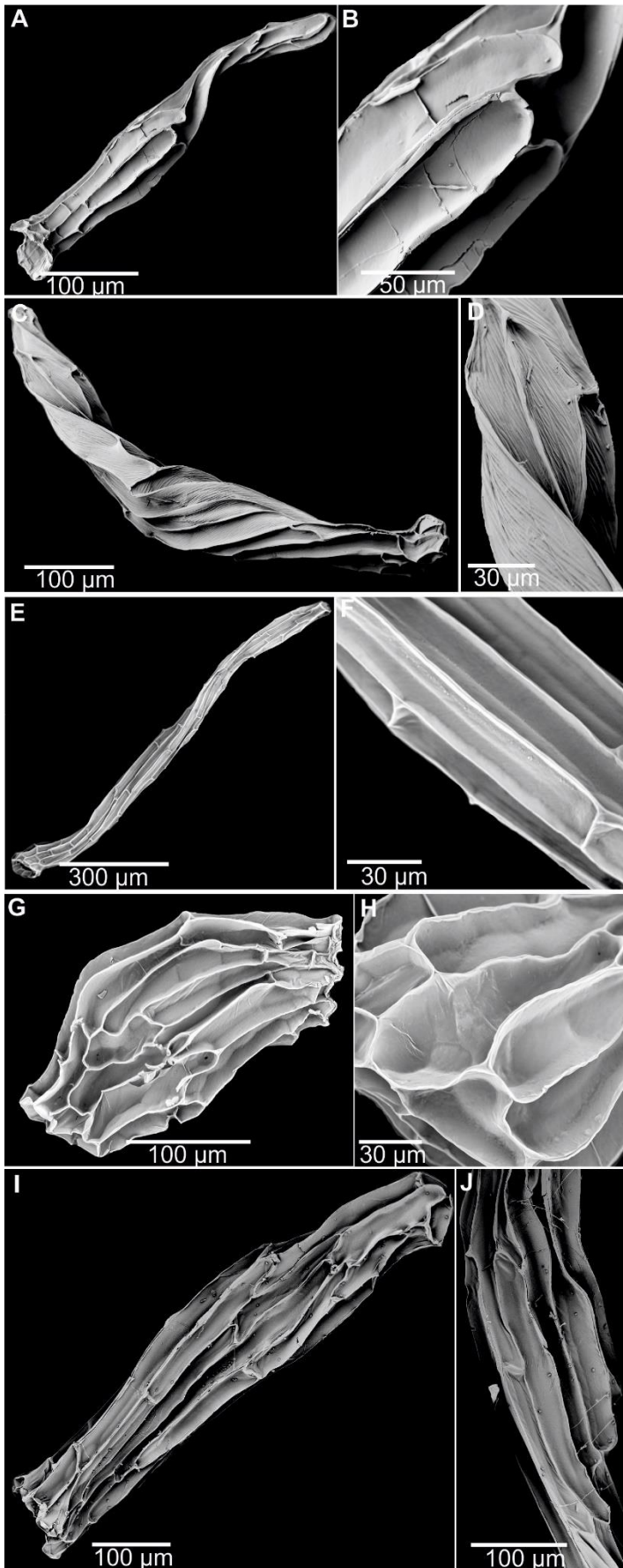


Figure S19. A, B - *Habenaria trachypetala*, C, D - *Habenaria tridactyla*, E, F - *Habenaria tridactylites*, G, H - *Habenaria tridens*,

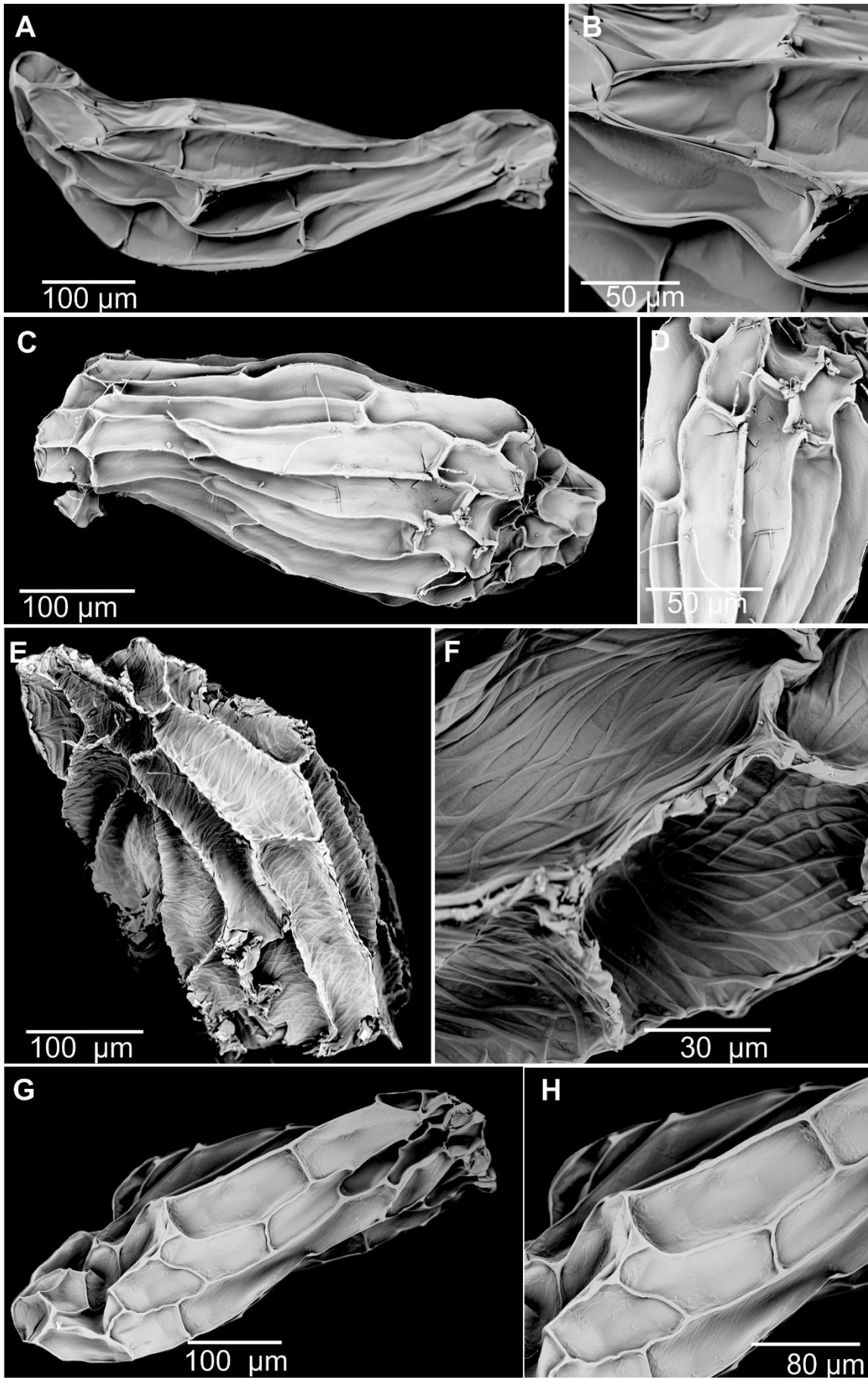


Figure S20. A, B - *Habenaria vaginata*, C, D - *Habenaria viridiflora*, E, F - *Herminium elisabethae*, G, H - *Herminium lanceum*,

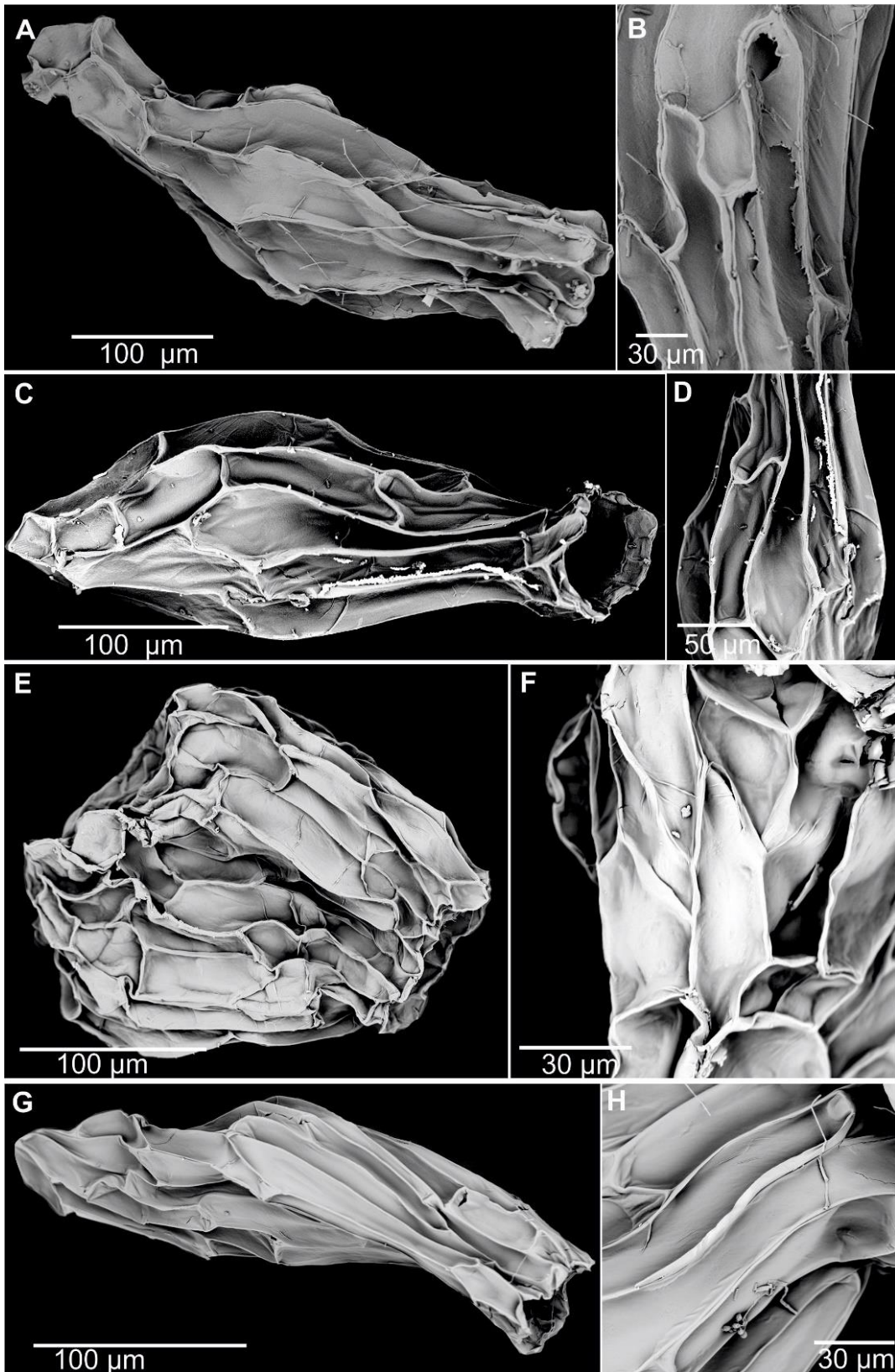


Figure S21. A, B - *Platanthera latilabris*, C, D - *Herminium monorchis*,

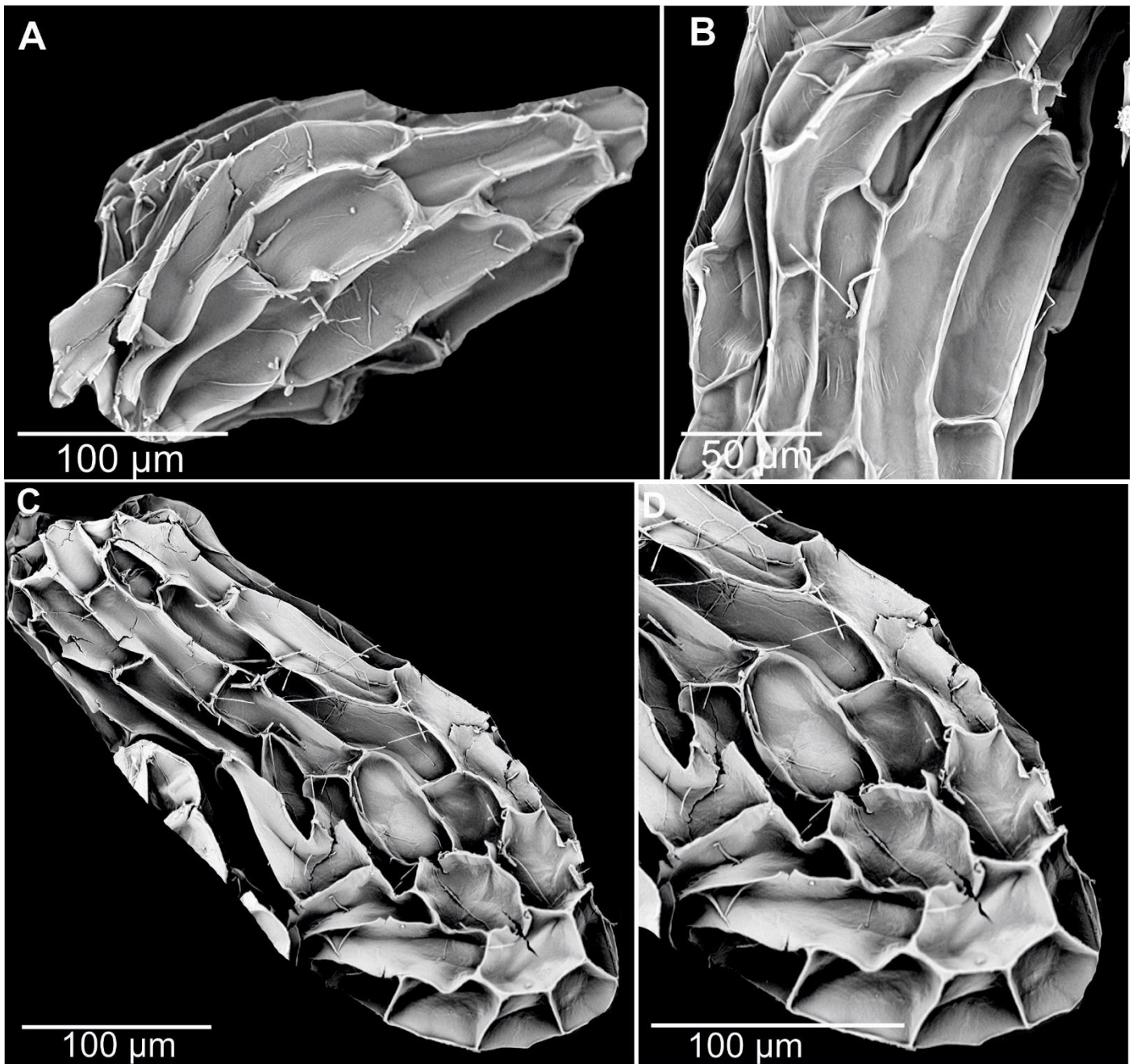


Figure S22. A, B - *Holothrix aphylla*, C, D - *Holothrix cernua*, E, F - *Neotinea maculata*, G, H - *Peristylus bulleyi*, I, J - *Peristylus cubitalis*,

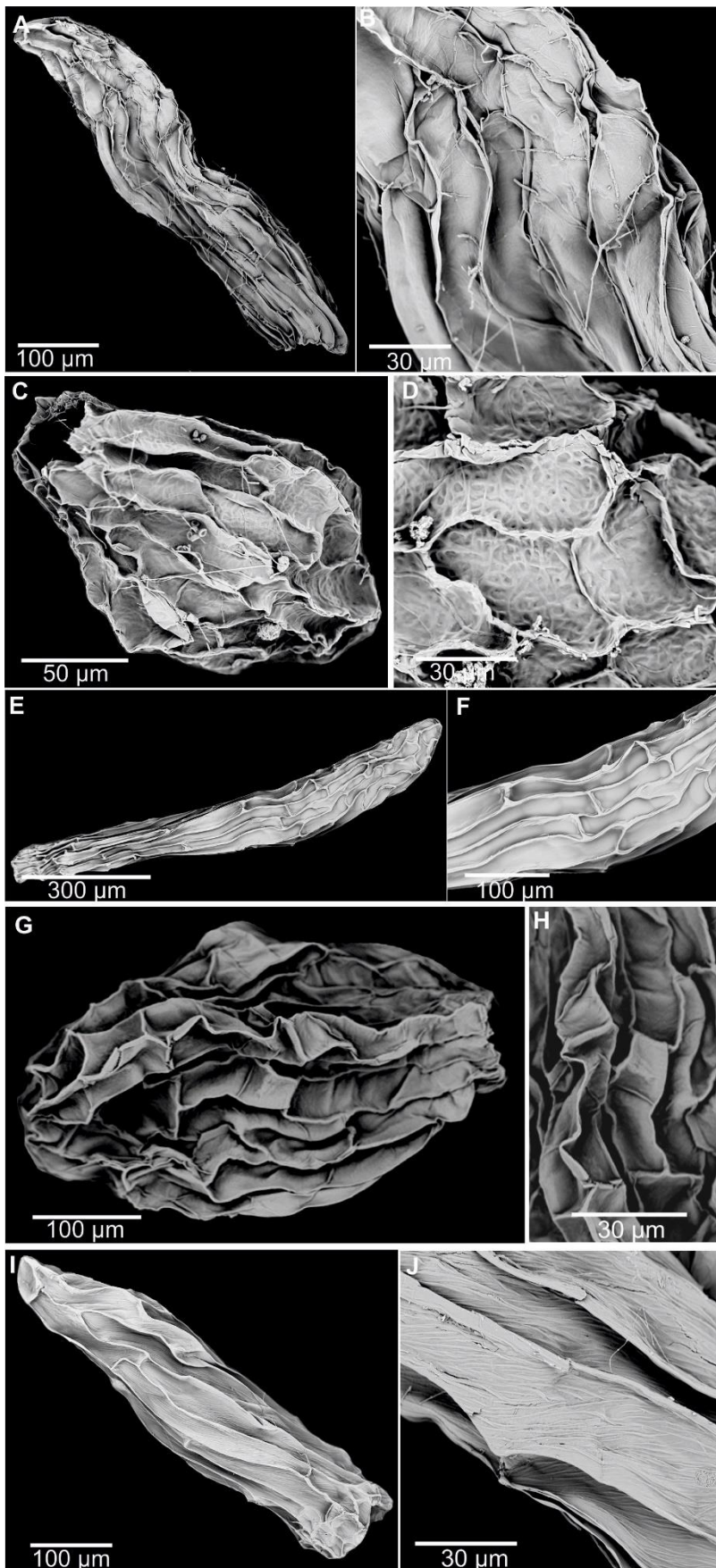


Figure S23. A, B - *Peristylus densus*, C, D - *Peristylus goodyeroides*, E, F - *Peristylus monticola*, G, H - *Peristylus tentaculatus*,

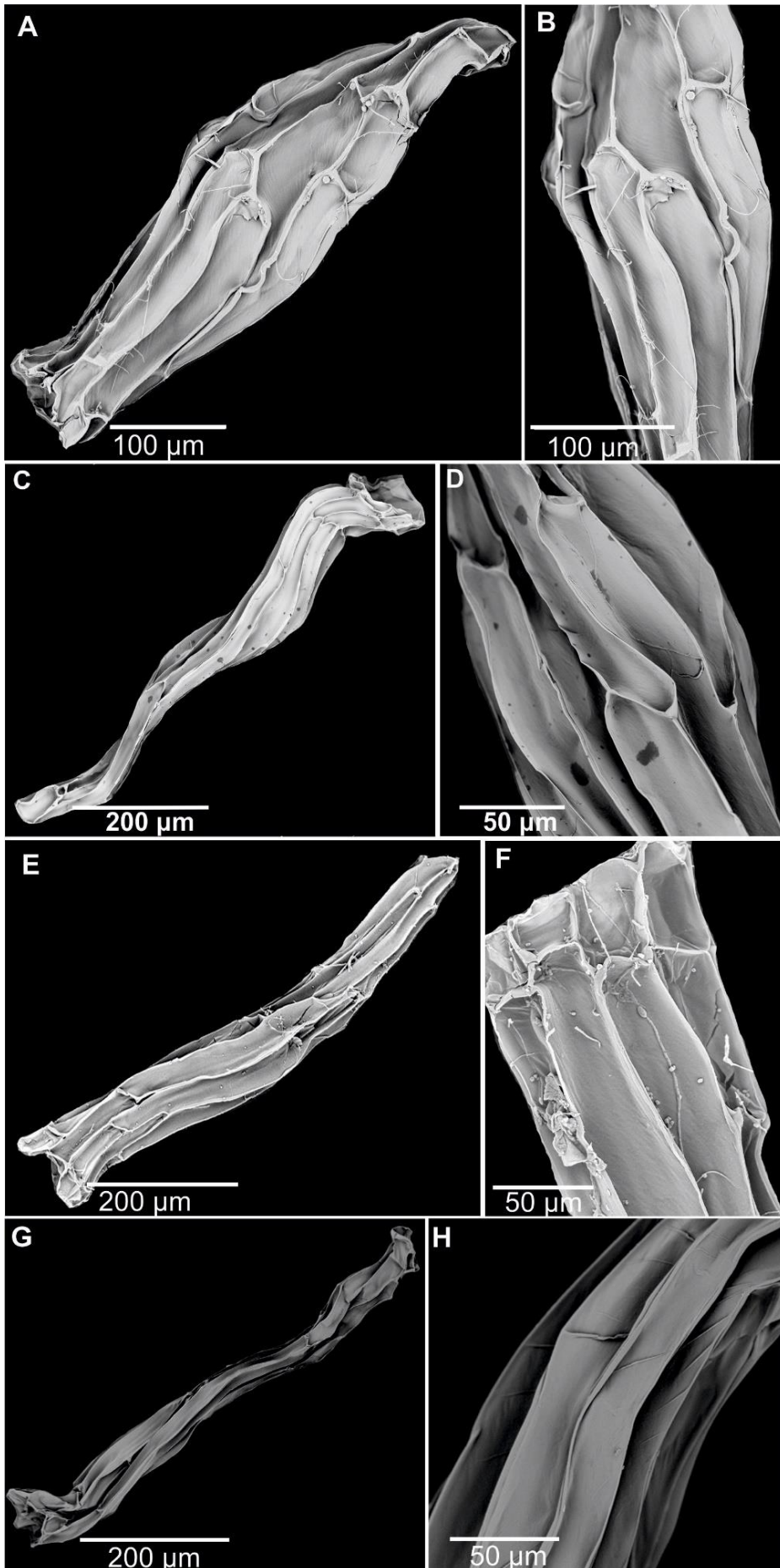


Figure S24. A, B - *Platanthera clavellate*, C, D - *Platanthera dilatata*, E, F - *Platanthera elegans*, G, H - *Platanthera elongate*,

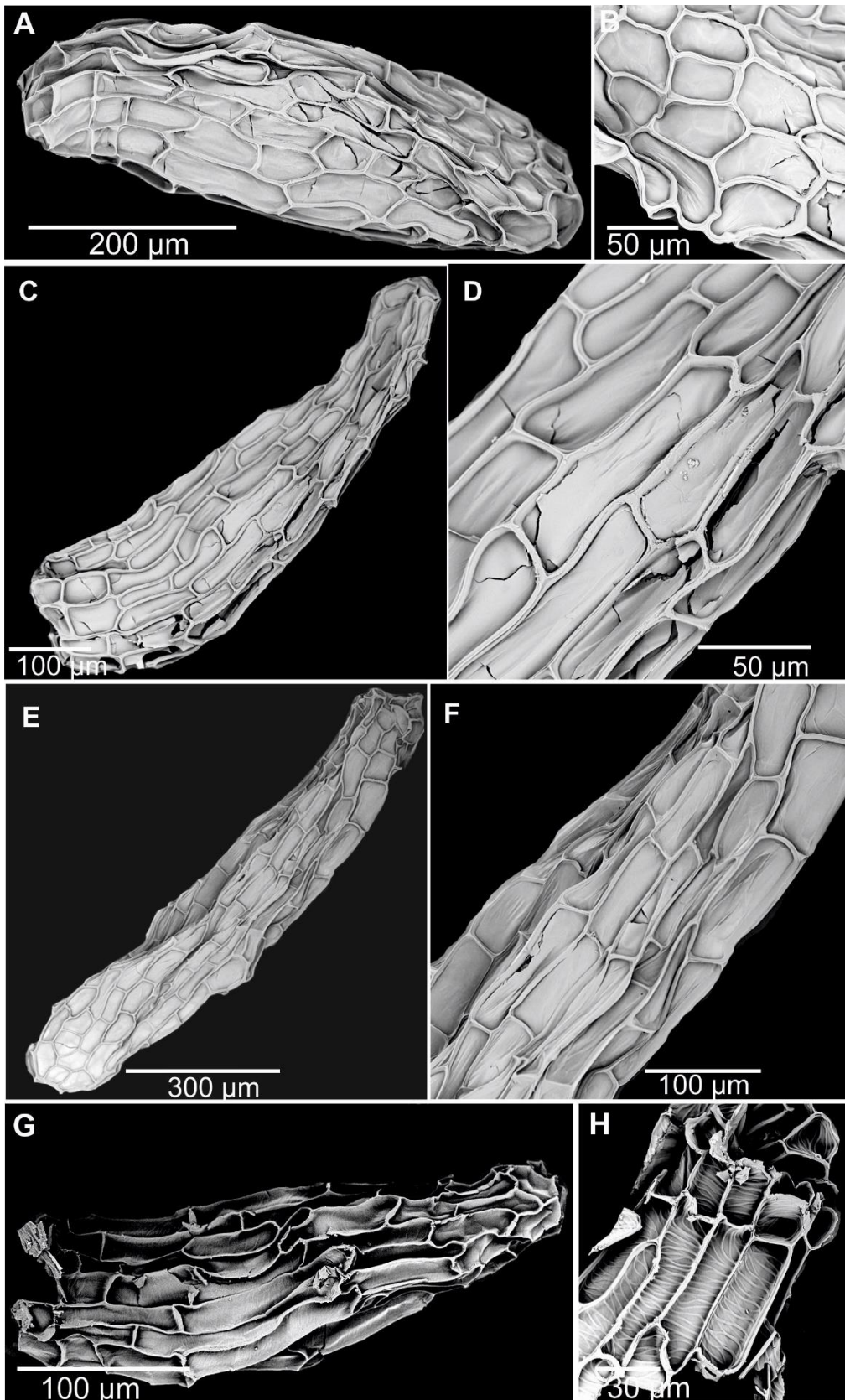


Figure S25. A, B - *Platanthera flava* var. *herbiola*, C, D - *Platanthera hookeri*, E, F - *Platanthera hyperborea*, G, H - *Platanthera obtusata*,

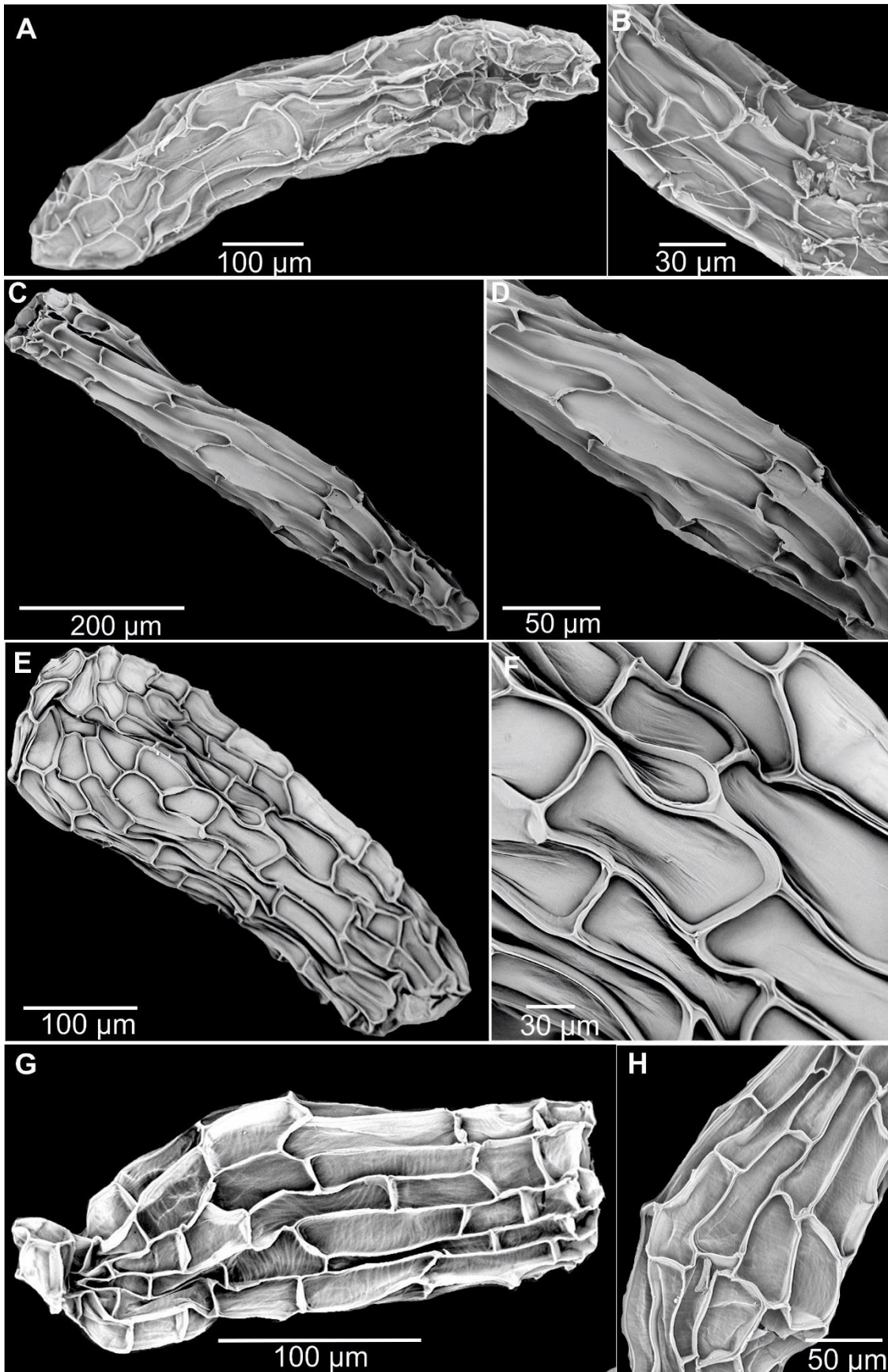


Figure S26. A, B - *Platanthera stricta*, C, D - *Piperia unalascensis*, E, F - *Pseudorchis albida*.

