

# Tropical Forest of the South Autonomous Atlantic Region TREES and SHRUBS of the RAAS, Nicaragua

# 1

WEB VERSION

Ray Garth, Robin Foster, Iñigo de la Cerda, John Vandermeer

Photos by: R. B. Foster, Iñigo de la Cerda, & J. Vandermeer. Produced by: R. B. Foster, T. Theim, H. Betz, M. R. Metz, with support from the Andrew Mellon Foundation.  
© Univ. of Michigan; Environmental & Conservation Programs, The Field Museum, Chicago, IL 60605 USA. [RRC@fmnh.org] Rapid Color Guide # 74 version 1.2



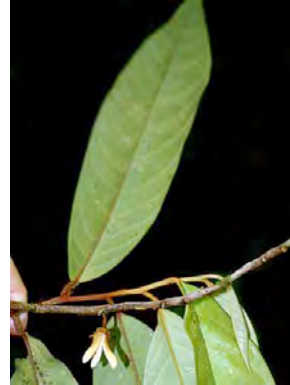
1 *Hogplum* ANACARDIACEAE  
*Spondias mombin*



2 *June plum* ANACARDIACEAE  
*Spondias purpurea*



3 *Mountain cow food* ANACARDIACEAE  
*Tapirira guianensis*



4 *Wari string* ANNONACEAE  
*Anaxagorea crassipetala*



5 *Wari string* ANNONACEAE  
*Anaxagorea crassipetala*



6 *Babapl* ANNONACEAE  
*Annona glabra*



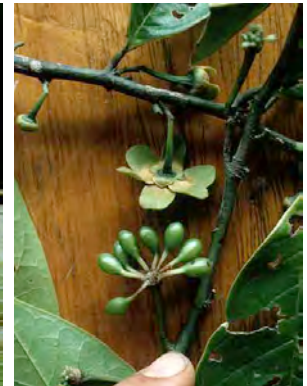
7 *Babaple* ANNONACEAE  
*Annona glabra*



8 *Sowasap* ANNONACEAE  
*Annona muricata*



9 *Untasani* ANNONACEAE  
*Guatteria diospyrifolia*



10 *Untasani* ANNONACEAE  
*Guatteria diospyrifolia*



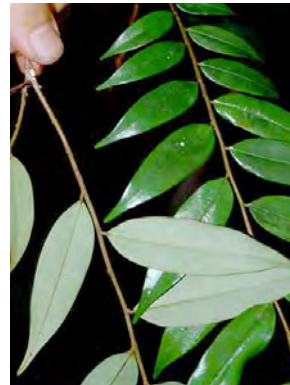
11 ANNONACEAE  
*Guatteria recurvisepala*



12 *Untasani* ANNONACEAE  
*Guatteria*



13 *Black untasani* ANNONACEAE  
*Unonopsis*



14 *Pole wood* ANNONACEAE  
*Xylopia sericophylla*



15 *Pole wood* ANNONACEAE  
*Xylopia sericophylla*



16 *Sapadilla* APOCYNACEAE  
*Lacmellea panamensis*



17 *Sapadilla* APOCYNACEAE  
*Lacmellea*



18 *Hog seed* APOCYNACEAE  
*Stemmadenia*



19 *Dog seed* APOCYNACEAE  
*Tabernaemontana*



20 *Dog seed* APOCYNACEAE  
*Tabernaemontana*

# Tropical Forest of the South Autonomous Atlantic Region TREES and SHRUBS of the RAAS, Nicaragua

WEB VERSION

Ray Garth, Robin Foster, Iñigo de la Cerda, John Vandermeer

Photos by: R. B. Foster, Iñigo de la Cerda, & J. Vandermeer. Produced by: R. B. Foster, T. Theim, H. Betz, M. R. Metz, with support from the Andrew Mellon Foundation.  
© Univ. of Michigan; Environmental & Conservation Programs, The Field Museum, Chicago, IL 60605 USA. [RRC@fmnh.org] Rapid Color Guide # 74 version 1.2



21 *Dog seed* APOCYNACEAE  
*Tabernaemontana*



22 *Red seed* APOCYNACEAE  
*Thevetia ahouai*



23 *Crab shell* ARALIACEAE  
*Dendropanax arboreus*



24 *Crab shell* ARALIACEAE  
*Dendropanax arboreus*



25 *Crab shell* ARALIACEAE  
*Dendropanax*



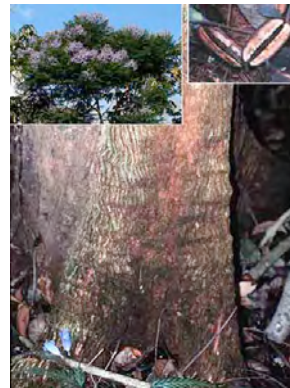
26 *Nine finger* ARALIACEAE  
*Schefflera morototoni*



27 *Nine finger* ARALIACEAE  
*Schefflera morototoni*



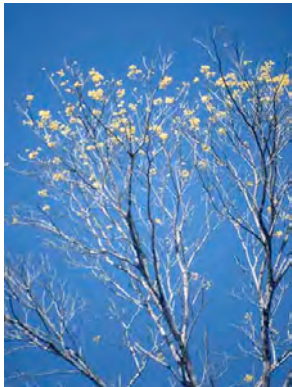
28 *Gody* BIGNONIACEAE  
*Crescentia*



29 *Kuam tree* BIGNONIACEAE  
*Jacaranda copaia*



30 *Kuam tree* BIGNONIACEAE  
*Jacaranda copaia*



31 BIGNONIACEAE  
*Tabebuia neochrysantha*



32 *Guayacan* BIGNONIACEAE  
*Tabebuia guayacan*



33 *Savana oak* BIGNONIACEAE  
*Tabebuia rosea*



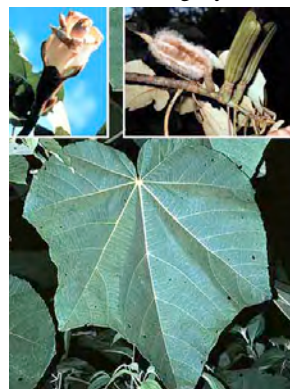
34 *Savana oak* BIGNONIACEAE  
*Tabebuia rosea*



35 *Nata* BIXACEAE  
*Bixa urucurana*



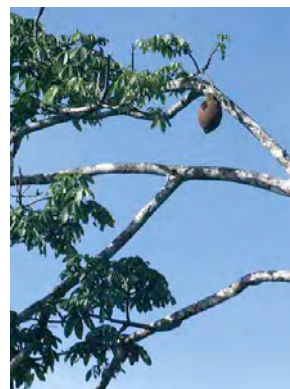
36 *Cotton* BOMBACACEAE  
*Ceiba pentandra*



37 *Mojo* BOMBACACEAE  
*Ochroma pyramidale*



38 *Provision* BOMBACACEAE  
*Pachira aquatica*



39 *Provision* BOMBACACEAE  
*Pachira aquatica*



40 *Provision* BOMBACACEAE  
*Pachira aquatica*

# Tropical Forest of the South Autonomous Atlantic Region TREES and SHRUBS of the RAAS, Nicaragua

WEB VERSION

Ray Garth, Robin Foster, Iñigo de la Cerda, John Vandermeer

Photos by: R. B. Foster, Iñigo de la Cerda, & J. Vandermeer. Produced by: R. B. Foster, T. Theim, H. Betz, M. R. Metz, with support from the Andrew Mellon Foundation.  
© Univ. of Michigan; Environmental & Conservation Programs, The Field Museum, Chicago, IL 60605 USA. [RRC@fmnh.org] Rapid Color Guide # 74 version 1.2



41 *Provision* BOMBACACEAE  
*Pachira*



42 *Sam wood* BORAGINACEAE  
*Cordia alliodora*



43 *Sam wood* BORAGINACEAE  
*Cordia alliodora*



44 *Camp stick* BORAGINACEAE  
*Cordia bicolor*



45 *Wild shade* BORAGINACEAE  
*Cordia*



46 *Spary* BORAGINACEAE  
*Cordia*



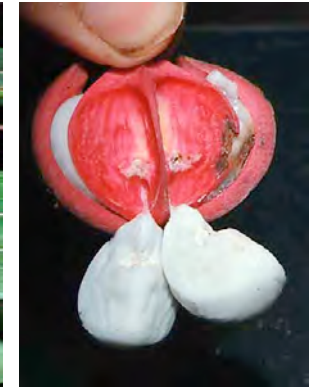
47 *Kiamphia* BURSERACEAE  
*Protium*



48 *Kiamphia* BURSERACEAE  
*Protium*



49 *Kerosene* BURSERACEAE  
*Tetragastris panamensis*



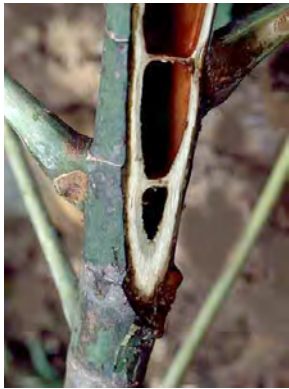
50 *Kerosene* BURSERACEAE  
*Tetragastris panamensis*



51 *Trumpet* CECROPIACEAE  
*Cecropia insignis*



52 *Trumpet* CECROPIACEAE  
*Cecropia obtusifolia*



53 *Trumpet* CECROPIACEAE  
*Cecropia obtusifolia*



54 *False trumpet* CECROPIACEAE  
*Pourouma bicolor*



55 CELASTRACEAE  
*Maytenus*



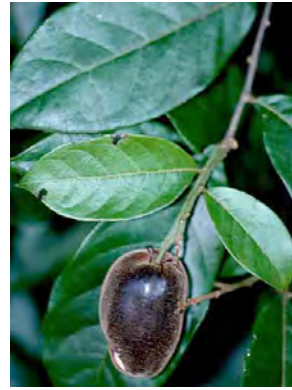
56 *Coco plum* CHRYSOBALANACEAE  
*Chrysobalanus icaco*



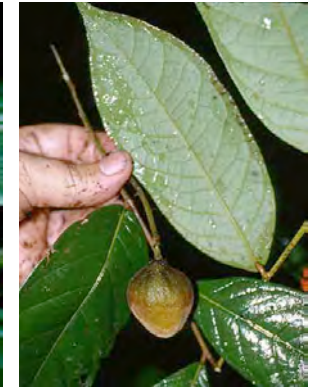
57 *Hairy plum* CHRYSOBALANACEAE  
*Hirtella americana*



58 *Zenia* CHRYSOBALANACEAE  
*Hirtella guatemalensis?*



59 *Pigin plum* CHRYSOBALANACEAE  
*Hirtella triandra*



60 *Hairy plum* CHRYSOBALANACEAE  
*Hirtella*

# Tropical Forest of the South Autonomous Atlantic Region TREES and SHRUBS of the RAAS, Nicaragua

WEB VERSION

Ray Garth, Robin Foster, Iñigo de la Cerda, John Vandermeer

Photos by: R. B. Foster, Iñigo de la Cerda, & J. Vandermeer. Produced by: R. B. Foster, T. Theim, H. Betz, M. R. Metz, with support from the Andrew Mellon Foundation.  
© Univ. of Michigan; Environmental & Conservation Programs, The Field Museum, Chicago, IL 60605 USA. [RRC@fmnh.org] Rapid Color Guide # 74 version 1.2



61 *Red berry* CHRYSOBALANACEAE  
*Licania hypoleuca*



62 *Red berry* CHRYSOBALANACEAE  
*Licania hypoleuca*



63 *Nigahead* CHRYSOBALANACEAE  
*Licania*



64 *Biuj* CHRYSOBALANACEAE  
*Maranthes panamensis*



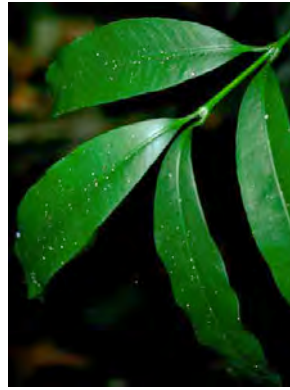
65 *Pipe stick* CLETHRACEAE  
*Clethra*



66 *Sta maria* CLUSIACEAE  
*Calophyllum brasiliense*



67 *Sambogon* CLUSIACEAE  
*Symphonia globulifera*



68 *Suumu* CLUSIACEAE  
*Garcinia intermedia*



69 *Suumu* CLUSIACEAE  
*Garcinia intermedia*



70 *Coom leaf* CLUSIACEAE  
*Garcinia madruno*



71 *Ringworm leaf* CLUSIACEAE  
*Vismia ferruginea?*



72 *Ringworm leaf* CLUSIACEAE  
*Vismia ferruginea?*



73 *Ringworm leaf* CLUSIACEAE  
*Vismia macrophylla*



74 *Ringworm leaf* CLUSIACEAE  
*Vismia macrophylla*



75 *Ringworm leaf* CLUSIACEAE  
*Vismia*



76 COCHLOSPERMACEAE  
*Cochlospermum vitifolium*



77 *Olive* COMBRETACEAE  
*Terminalia amazonia*



78 *Amance* COMBRETACEAE  
*Terminalia catappa*



79 ELAEOCARPACEAE  
*Sloanea*



80 ELAEOCARPACEAE  
*Sloanea?*

# Tropical Forest of the South Autonomous Atlantic Region TREES and SHRUBS of the RAAS, Nicaragua

WEB VERSION

Ray Garth, Robin Foster, Iñigo de la Cerda, John Vandermeer

Photos by: R. B. Foster, Iñigo de la Cerda, & J. Vandermeer. Produced by: R. B. Foster, T. Theim, H. Betz, M. R. Metz, with support from the Andrew Mellon Foundation.  
© Univ. of Michigan; Environmental & Conservation Programs, The Field Museum, Chicago, IL 60605 USA. [RRC@fmnh.org] Rapid Color Guide # 74 version 1.2



81 *Saw leaf* EUPHORBIACEAE  
*Acidoton nicaraguense*



82 *Saw leaf* EUPHORBIACEAE  
*Acidoton nicaraguense*



83 EUPHORBIACEAE  
*Alchornea costaricensis*



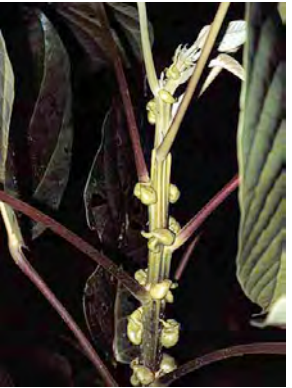
84 EUPHORBIACEAE  
*Alchornea latifolia*



85 *Medicemojo* EUPHORBIACEAE  
*Croton schiedeanus*



86 *Ichy mojo* EUPHORBIACEAE  
*Croton smithianus*



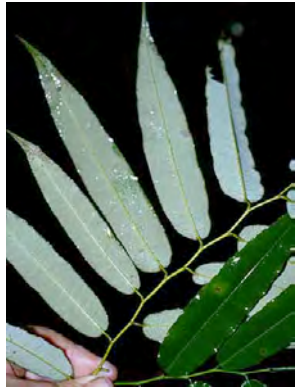
87 *Red wood* EUPHORBIACEAE  
*Hyeronima alchorneoides*



88 *Red wood* EUPHORBIACEAE  
*Hyeronima alchorneoides*



89 *Pigin toe* EUPHORBIACEAE  
*Mabea occidentalis*



90 *Pigin toe* EUPHORBIACEAE  
*Mabea*



91 *Pigin toe* EUPHORBIACEAE  
*Mabea*



92 EUPHORBIACEAE  
*Pausandra trianae*



93 *Apple* EUPHORBIACEAE  
*Pera arborea*



94 *Old lady hair* FABACEAE  
*Abarema macradenium*



95 *Old lady hair* FABACEAE  
*Abarema macradenium*



96 *Acacia mangium* FABACEAE  
*Acacia mangium*



97 *Bullit* FABACEAE  
*Andira inermis*



98 *Yard malinche* FABACEAE  
*Caesalpinia pulcherrima*



99 *Comenegro* FABACEAE  
*Dialium guianense*



100 *Malinche* FABACEAE  
*Delonix regia*

# Tropical Forest of the South Autonomous Atlantic Region TREES and SHRUBS of the RAAS, Nicaragua

WEB VERSION

Ray Garth, Robin Foster, Iñigo de la Cerda, John Vandermeer

Photos by: R. B. Foster, Iñigo de la Cerda, & J. Vandermeer. Produced by: R. B. Foster, T. Theim, H. Betz, M. R. Metz, with support from the Andrew Mellon Foundation.  
© Univ. of Michigan; Environmental & Conservation Programs, The Field Museum, Chicago, IL 60605 USA. [RRC@fmnh.org] Rapid Color Guide # 74 version 1.2



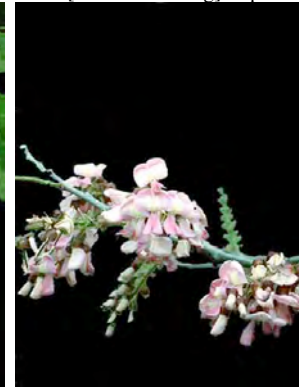
**101 Ibo** FABACEAE  
*Dipteryx oleifera*



**102 Ibo flower** FABACEAE  
*Dipteryx oleifera*



**103 Horse beans** FABACEAE  
*Erythrina*



**104 Black stick** FABACEAE  
*Gliricidia sepium*



**105 Locas** FABACEAE  
*Hymenaea courbaril*



**106 Bribri** FABACEAE  
*Inga acuminata*



**107 Bribri** FABACEAE  
*Inga cocleensis*



**108 Bribri** FABACEAE  
*Inga cocleensis*



**109 Bribri** FABACEAE  
*Inga goldmanii*



**110 Bribri** FABACEAE  
*Inga laurina*



**111 Bribri** FABACEAE  
*Inga pavonis*



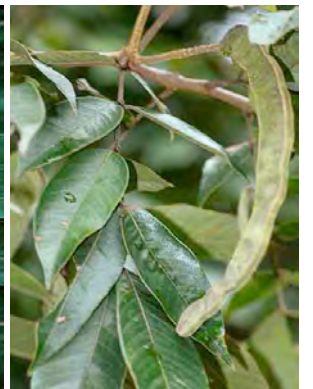
**112 Bribri** FABACEAE  
*Inga pezizifera*



**113 Bribri** FABACEAE  
*Inga punctata*



**114 River bribri** FABACEAE  
*Inga thibaudiana*



**115 River bribri** FABACEAE  
*Inga thibaudiana*



**116 Bribri** FABACEAE  
*Inga umbellifera*



**117 Bribri** FABACEAE  
*Inga*



**118 Bribri** FABACEAE  
*Inga*



**119 Bribri** FABACEAE  
*Inga*



**120 Bribri** FABACEAE  
*Inga*

# Tropical Forest of the South Autonomous Atlantic Region TREES and SHRUBS of the RAAS, Nicaragua

WEB VERSION

Ray Garth, Robin Foster, Iñigo de la Cerda, John Vandermeer

Photos by: R. B. Foster, Iñigo de la Cerda, & J. Vandermeer. Produced by: R. B. Foster, T. Theim, H. Betz, M. R. Metz, with support from the Andrew Mellon Foundation.  
© Univ. of Michigan; Environmental & Conservation Programs, The Field Museum, Chicago, IL 60605 USA. [RRC@fmnh.org] Rapid Color Guide # 74 version 1.2



**121** *Girly* FABACEAE  
*Lecointea peruviana*



**122** *Dog bush* FABACEAE  
*Lonchocarpus*



**123** *Dog bush* FABACEAE  
*Lonchocarpus*



**124** *Sleeping tree* FABACEAE  
*Pentaclethra macroloba*



**125** *Sleeping tree* FABACEAE  
*Pentaclethra macroloba*



**126** *Sleeping tree* FABACEAE  
*Pentaclethra macroloba*



**127** *Bat ears tree* FABACEAE  
*Prioria copaifera*



**128** *Bat ears tree* FABACEAE  
*Prioria copaifera*



**129** *High land cawi* FABACEAE  
*Pterocarpus rohrii*



**130** *High land cawi* FABACEAE  
*Pterocarpus rohrii*



**131** *Christmas blossom* FABACEAE  
*Senna alata*



**132** *Nica purge* FABACEAE  
*Senna*



**133** *Nica purge* FABACEAE  
*Senna*



**134** *Pink mary* FABACEAE  
*Zygia longifolia*



**135** *Pink mary* FABACEAE  
*Zygia longifolia*



**136** FABACEAE



**137** FABACEAE



**138** FLACOURTIACEAE  
*Banara guianensis*



**139** *White wood* FLACOURTIACEAE  
*Casearia arborea*



**140** *White wood* FLACOURTIACEAE  
*Casearia arborea*

# Tropical Forest of the South Autonomous Atlantic Region TREES and SHRUBS of the RAAS, Nicaragua

WEB VERSION

Ray Garth, Robin Foster, Iñigo de la Cerda, John Vandermeer

Photos by: R. B. Foster, Iñigo de la Cerda, & J. Vandermeer. Produced by: R. B. Foster, T. Theim, H. Betz, M. R. Metz, with support from the Andrew Mellon Foundation.  
© Univ. of Michigan; Environmental & Conservation Programs, The Field Museum, Chicago, IL 60605 USA. [RRC@fmnh.org] Rapid Color Guide # 74 version 1.2



141 *White wood* FLACOURTIACEAE  
*Casearia commersoniana*



142 *White wood* FLACOURTIACEAE  
*Casearia sylvestris*



143 *White wood* FLACOURTIACEAE  
*Casearia*



144 *White wood* FLACOURTIACEAE  
*Casearia*



145 *White wood* FLACOURTIACEAE  
*Casearia*



146 *White wood* FLACOURTIACEAE  
*Casearia?*



147 *Hasseltia* FLACOURTIACEAE  
*Hasseltia floribunda*



148 *Hasseltia* FLACOURTIACEAE  
*Hasseltia floribunda*



149 *White wood* FLACOURTIACEAE  
*Lacistema aggregatum*



150 *Areno* FLACOURTIACEAE  
*Laetia procera*



151 *Areno* FLACOURTIACEAE  
*Laetia thamnina*



152 *Areno* FLACOURTIACEAE  
*Laetia thamnina*



153 FLACOURTIACEAE  
*Lindackeria laurina*



154 *Areno* FLACOURTIACEAE  
*Ryania speciosa*



155 *Areno* FLACOURTIACEAE  
*Ryania speciosa*



156 *Star prickly* FLACOURTIACEAE  
*Xylosma*



157 *Ironwood* FLACOURTIACEAE  
*Zuelania guidonia*



158 *Ironwood* FLACOURTIACEAE  
*Zuelania guidonia*



159 *Ironwood* FLACOURTIACEAE  
*Zuelania guidonia*



160 HUMRIACEAE  
*Sacoglottis trichogyna*



# Tropical Forest of the South Autonomous Atlantic Region TREES and SHRUBS of the RAAS, Nicaragua

WEB VERSION

Ray Garth, Robin Foster, Iñigo de la Cerda, John Vandermeer

Photos by: R. B. Foster, Iñigo de la Cerda, & J. Vandermeer. Produced by: R. B. Foster, T. Theim, H. Betz, M. R. Metz, with support from the Andrew Mellon Foundation.  
© Univ. of Michigan; Environmental & Conservation Programs, The Field Museum, Chicago, IL 60605 USA. [RRCC@fmnh.org] Rapid Color Guide # 74 version 1.2



161 *Wild pear* LAURACEAE  
Ocotea



162 *Wild pear* LAURACEAE  
Ocotea



163 *Pear* LAURACEAE  
*Persea americana*



164 *Pear* LAURACEAE  
*Persea americana*



165 LAURACEAE



166 *Tubaco* LECYTHIDACEAE  
*Grias cauliflora*



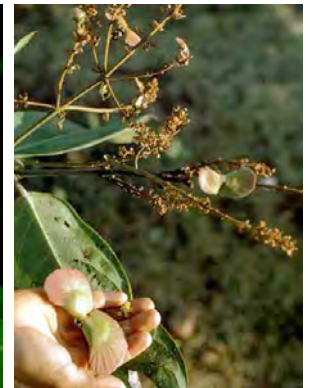
167 *Monkey pot* LECYTHIDACEAE  
*Lecythis ampla*



168 LYTHRACEAE  
*Adenaria floribunda*



169 *Crabu* MALPIGHIACEAE  
*Byrsonima crassifolia*



170 MALPIGHIACEAE  
*Heteropterys multiflora*



171 *Jug* MELASTOMATACEAE  
*Aciotis*



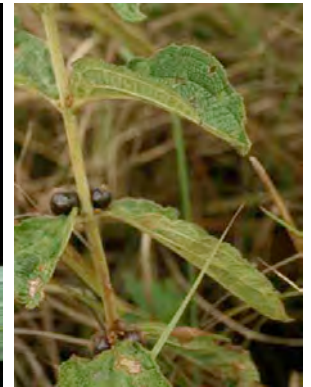
172 *Shaya* MELASTOMATACEAE  
*Bellucia grossularioides*



173 *Jug* MELASTOMATACEAE  
*Clidemia*



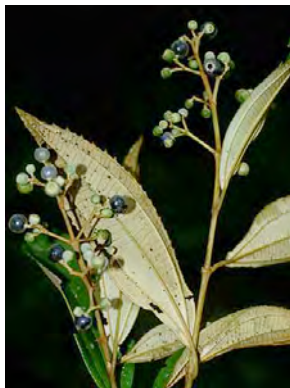
174 *Jug* MELASTOMATACEAE  
*Clidemia*



175 *Jugjug* MELASTOMATACEAE  
*Clidemia*



176 MELASTOMATACEAE  
*Conostegia xalapensis*



177 *Shaya* MELASTOMATACEAE  
*Conostegia xalapensis*



178 *Shaya* MELASTOMATACEAE  
*Henriettea seemanii*



179 *Shaya* MELASTOMATACEAE  
*Henriettea seemanii*



180 *Chinejug* MELASTOMATACEAE  
*Leandra*

Ray Garth, Robin Foster, Iñigo de la Cerda, John Vandermeer

Photos by: R. B. Foster, Iñigo de la Cerda, & J. Vandermeer. Produced by: R. B. Foster, T. Theim, H. Betz, M. R. Metz, with support from the Andrew Mellon Foundation.  
© Univ. of Michigan; Environmental & Conservation Programs, The Field Museum, Chicago, IL 60605 USA. [RRC@fmnh.org] Rapid Color Guide # 74 version 1.2



181 *Jug* MELASTOMATACEAE  
*Leandra*



182 *Jug* MELASTOMATACEAE  
*Leandra*



183 *Shaya* MELASTOMATACEAE  
*Miconia affinis*



184 *Shaya* MELASTOMATACEAE  
*Miconia argentea*



185 *Shaya* MELASTOMATACEAE  
*Miconia bubalina*



186 *Shaya* MELASTOMATACEAE  
*Miconia elata*



187 *Shaya* MELASTOMATACEAE  
*Miconia impetiolepis*



188 *Shaya* MELASTOMATACEAE  
*Miconia lateriflora*



189 *Shaya* MELASTOMATACEAE  
*Miconia prasina*



190 *Shaya* MELASTOMATACEAE  
*Miconia stevensiana*



191 *Shaya* MELASTOMATACEAE  
*Miconia tomentosa*



192 *Shaya* MELASTOMATACEAE  
*Miconia*



193 *Shaya* MELASTOMATACEAE  
*Miconia*



194 *Shaya* MELASTOMATACEAE  
*Miconia*



195 MELASTOMATACEAE  
*Mouriri myrtilloides*



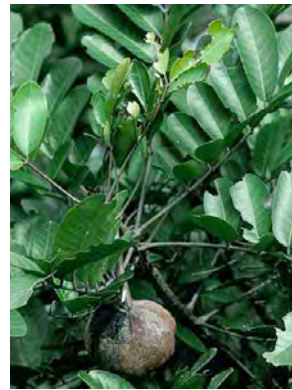
196 *Shaya* MELASTOMATACEAE  
*Tococa*



197 *Shaya* MELASTOMATACEAE  
*Tococa*



198 *Shaya* MELASTOMATACEAE  
*Tococa*



199 *Saba* MELIACEAE  
*Carapa guianensis*



200 *Saba* MELIACEAE  
*Carapa guianensis*

# Tropical Forest of the South Autonomous Atlantic Region TREES and SHRUBS of the RAAS, Nicaragua

WEB VERSION

Ray Garth, Robin Foster, Iñigo de la Cerda, John Vandermeer

Photos by: R. B. Foster, Iñigo de la Cerda, & J. Vandermeer. Produced by: R. B. Foster, T. Theim, H. Betz, M. R. Metz, with support from the Andrew Mellon Foundation.  
© Univ. of Michigan; Environmental & Conservation Programs, The Field Museum, Chicago, IL 60605 USA. [RRCC@fmnh.org] Rapid Color Guide # 74 version 1.2



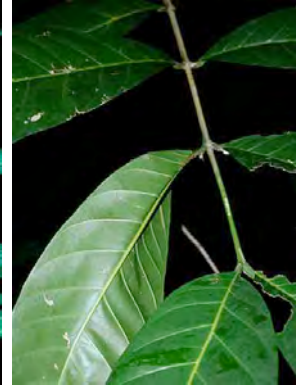
201 MELIACEAE  
*Guarea bullata*



202 MELIACEAE  
*Guarea kunthiana*



203 MELIACEAE  
*Guarea grandifolia*



204 MELIACEAE  
*Guarea grandifolia*



205 *Wing leaf* MELIACEAE  
*Guarea pterorhachis*



206 *Mahogany* MELIACEAE  
*Swietenia macrophylla*



207 *Mahogany* MELIACEAE  
*Swietenia macrophylla*



208 MELIACEAE  
*Trichilia pallida*



209 MELIACEAE  
*Trichilia pallida*



210 *Snake bush* MONIMIACEAE  
*Siparuna*



211 *Snake bush* MONIMIACEAE  
*Siparuna*



212 *Snake bush* MONIMIACEAE  
*Siparuna*



213 *Breadfruit* MORACEAE  
*Artocarpus altilis*



214 *Ojoche* MORACEAE  
*Brosimum guianense*



215 *Ojoche* MORACEAE  
*Brosimum lactescens*



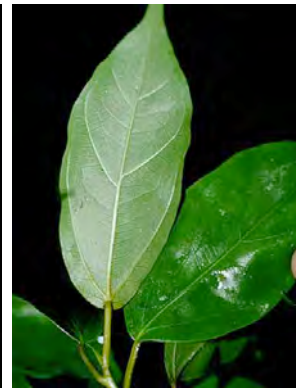
216 *Rubber tree* MORACEAE  
*Castilla elastica*



217 *Rubber tree* MORACEAE  
*Castilla elastica*



218 MORACEAE  
*Clarisia biflora*



219 *Fig* MORACEAE  
*Ficus colubrinae*



220 *Fig* MORACEAE  
*Ficus glabrata*

Ray Garth, Robin Foster, Iñigo de la Cerda, John Vandermeer

Photos by: R. B. Foster, Iñigo de la Cerda, & J. Vandermeer. Produced by: R. B. Foster, T. Theim, H. Betz, M. R. Metz, with support from the Andrew Mellon Foundation.  
© Univ. of Michigan; Environmental & Conservation Programs, The Field Museum, Chicago, IL 60605 USA. [RRC@fmnh.org] Rapid Color Guide # 74 version 1.2



221 Fig MORACEAE  
*Ficus pertusa*



222 Fig MORACEAE  
*Ficus*



223 Fig MORACEAE  
*Ficus*



224 Fig MORACEAE  
*Ficus*



225 MORACEAE  
*Maquira costaricana*



226 MORACEAE  
*Maquira costaricana*



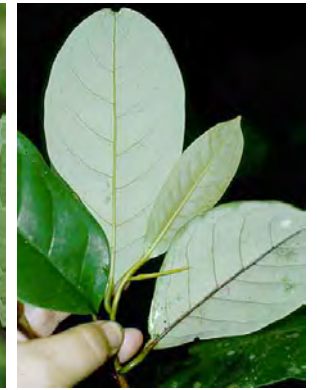
227 Ojoche MORACEAE  
*Pseudolmedia spuria*



228 Ojoche MORACEAE  
*Pseudolmedia spuria*



229 MORACEAE  
*Trophis racemosa*



230 Banak MYRISTICACEAE  
*Otoba novogranatensis*



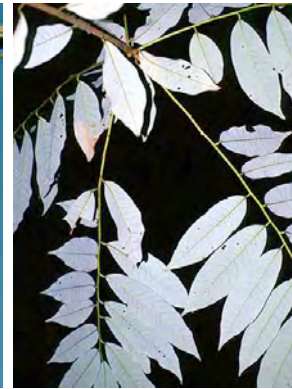
231 Banak MYRISTICACEAE  
*Otoba novogranatensis*



232 Banak MYRISTICACEAE  
*Virola koschnyi*



233 Banak MYRISTICACEAE  
*Virola koschnyi*



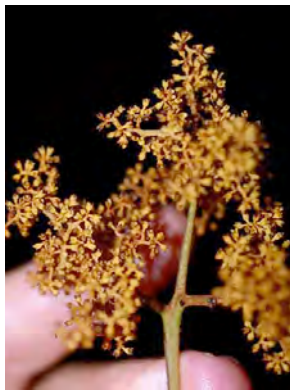
234 Banak MYRISTICACEAE  
*Virola multiflora*



235 Banak MYRISTICACEAE  
*Virola multiflora*



236 MYRISTICACEAE  
*Virola sebifera*



237 Banak MYRISTICACEAE  
*Virola sebifera*



238 Banak MYRISTICACEAE  
*Virola sebifera*



239 NYCTAGINACEAE  
*Guapira costaricana*



240 NYCTAGINACEAE  
*Guapira costaricana*

# Tropical Forest of the South Autonomous Atlantic Region TREES and SHRUBS of the RAAS, Nicaragua

WEB VERSION

Ray Garth, Robin Foster, Iñigo de la Cerda, John Vandermeer

Photos by: R. B. Foster, Iñigo de la Cerda, & J. Vandermeer. Produced by: R. B. Foster, T. Theim, H. Betz, M. R. Metz, with support from the Andrew Mellon Foundation.  
© Univ. of Michigan; Environmental & Conservation Programs, The Field Museum, Chicago, IL 60605 USA. [RRCC@fmnh.org] Rapid Color Guide # 74 version 1.2



241 *Wild grape* MYRSINACEAE  
*Ardisia standleyana* cf.



242 *Wild grape* MYRSINACEAE  
*Ardisia*



243 *Wild guava* MYRTACEAE  
*Myrcia splendens*



244 *Yardbroom tree* MYRTACEAE  
*Myrciaria floribunda*



245 *Guava* MYRTACEAE  
*Psidium guajava*



246 *Paquita* NYCTAGINACEAE  
*Neea*



247 *Paquita* NYCTAGINACEAE  
*Neea*



248 *Tubaco* OCHNACEAE  
*Cespedesia macrophylla*



249 *Tubaco* OCHNACEAE  
*Cespedesia macrophylla*



250 *Tubaco* OCHNACEAE  
*Ouratea costaricensis*



251 OCHNACEAE  
*Ouratea nitida*



252 OLACACEAE  
*Heisteria concinna*



253 OLACACEAE  
*Minquartia guianensis*



254 *He cow foot* PIPERACEAE  
*Piper auritum*



255 *Cow foot tea* PIPERACEAE  
*Piper peltatum*



256 *Cow foot* PIPERACEAE  
*Piper peltatum*



257 *Cow foot* PIPERACEAE  
*Piper*



158 *Cow foot* PIPERACEAE  
*Piper*



259 *Cow foot* PIPERACEAE  
*Piper*



260 *Cow foot* PIPERACEAE  
*Piper*

## Tropical Forest of the South Autonomous Atlantic Region TREES and SHRUBS of the RAAS, Nicaragua

WEB VERSION

Ray Garth, Robin Foster, Iñigo de la Cerda, John Vandermeer

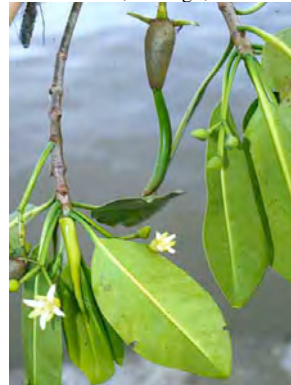
Photos by: R. B. Foster, Iñigo de la Cerda, & J. Vandermeer. Produced by: R. B. Foster, T. Theim, H. Betz, M. R. Metz, with support from the Andrew Mellon Foundation.  
© Univ. of Michigan; Environmental & Conservation Programs, The Field Museum, Chicago, IL 60605 USA. [RRC@fmnh.org] Rapid Color Guide # 74 version 1.2



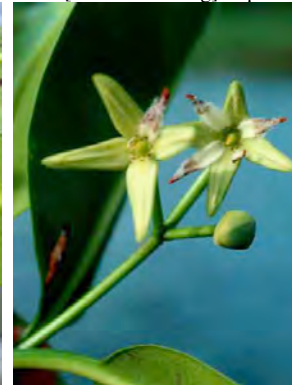
261 *Tubaco* POLYGONACEAE  
*Cocoloba tuerckheimii?*



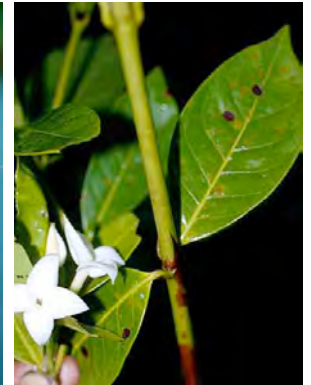
262 RHIZOPHORACEAE  
*Cassipourea elliptica*



263 *Red mangrove* RHIZOPHORACEAE  
*Rhizophora mangle*



264 *Red mangrove* RHIZOPHORACEAE  
*Rhizophora mangle*



265 *Sulul* RUBIACEAE  
*Alibertia edulis*



266 *Sulacra* RUBIACEAE  
*Amaioua corymbosa*



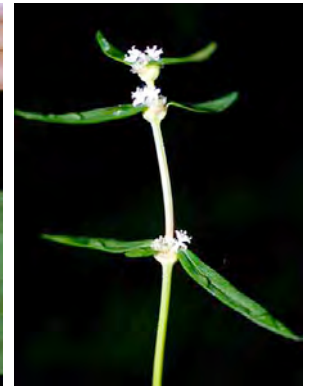
267 *Sulacra* RUBIACEAE  
*Amaioua corymbosa*



268 *Sulacra* RUBIACEAE  
*Amaioua corymbosa*



269 RUBIACEAE  
*Chione sylvicola*



270 RUBIACEAE  
*Crusea?*



271 RUBIACEAE  
*Fareaea occidentalis*



272 RUBIACEAE  
*Ferdinandusa panamensis*



273 RUBIACEAE  
*Genipa americana*



279 RUBIACEAE  
*Genipa americana*



280 *Swamp stick* RUBIACEAE  
*Guettarda combsii*



276 *Yellow red garfy* RUBIACEAE  
*Isertia haenkeana*



277 RUBIACEAE  
*Palicourea crocea*



278 *Monkey apple* RUBIACEAE  
*Posoqueria latifolia*



279 *Monkey apple* RUBIACEAE  
*Posoqueria latifolia*



280 RUBIACEAE  
*Psychotria acuminata*

# Tropical Forest of the South Autonomous Atlantic Region TREES and SHRUBS of the RAAS, Nicaragua

WEB VERSION

Ray Garth, Robin Foster, Iñigo de la Cerda, John Vandermeer

Photos by: R. B. Foster, Iñigo de la Cerda, & J. Vandermeer. Produced by: R. B. Foster, T. Theim, H. Betz, M. R. Metz, with support from the Andrew Mellon Foundation. © Univ. of Michigan; Environmental & Conservation Programs, The Field Museum, Chicago, IL 60605 USA. [RRC@fmnh.org] Rapid Color Guide # 74 version 1.2



281 RUBIACEAE  
*Psychotria acuminata*



282 RUBIACEAE  
*Psychotria berteriana*



283 RUBIACEAE  
*Psychotria brachiata*



284 RUBIACEAE  
*Psychotria brachiata*



285 RUBIACEAE  
*Psychotria capitata*



286 RUBIACEAE  
*Psychotria deflexa*



287 RUBIACEAE  
*Psychotria deflexa*



288 RUBIACEAE  
*Psychotria emetica*



289 *Blue beets* RUBIACEAE  
*Psychotria emetica*



290 *Wild coffee* RUBIACEAE  
*Psychotria glomerulata*



291 RUBIACEAE  
*Psychotria glomerulata*



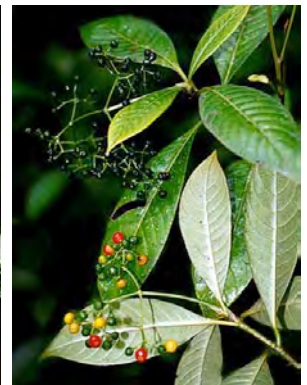
292 RUBIACEAE  
*Psychotria gracilentia*



293 RUBIACEAE  
*Psychotria gracilentia*



294 RUBIACEAE  
*Psychotria marginata*



295 RUBIACEAE  
*Psychotria marginata*



296 RUBIACEAE  
*Psychotria racemosa*



297 RUBIACEAE  
*Psychotria suerrensii*



198 RUBIACEAE  
*Psychotria*



299 RUBIACEAE  
*Randia*



300 RUBIACEAE  
*Rudgea cornifolia*

Ray Garth, Robin Foster, Iñigo de la Cerda, John Vandermeer

Photos by: R. B. Foster, Iñigo de la Cerda, & J. Vandermeer. Produced by: R. B. Foster, T. Theim, H. Betz, M. R. Metz, with support from the Andrew Mellon Foundation.  
© Univ. of Michigan; Environmental & Conservation Programs, The Field Museum, Chicago, IL 60605 USA. [RRC@fmnh.org] Rapid Color Guide # 74 version 1.2



301 *Sore toe* RUTACEAE  
*Galipea granulosa*



302 *Prickly yellow* RUTACEAE  
*Zanthoxylum ekmanii*



303 *Prickly yellow* RUTACEAE  
*Zanthoxylum ekmanii*



304 RUTACEAE  
*Zanthoxylum juniperinum*



305 RUTACEAE  
*Zanthoxylum juniperinum*



306 RUTACEAE  
*Zanthoxylum panamense*



307 RUTACEAE  
*Zanthoxylum panamense*



308 RUTACEAE  
*Zanthoxylum*



309 *Bila bila* SAPINDACEAE  
*Cupania*



310 *Bila bila* SAPINDACEAE  
*Cupania*



311 *Bila bila* SAPINDACEAE  
*Cupania*



312 SAPINDACEAE  
*Matayba oppositifolia*



313 SAPINDACEAE  
*Talisia nervosa*



314 SAPINDACEAE  
*Talisia nervosa*



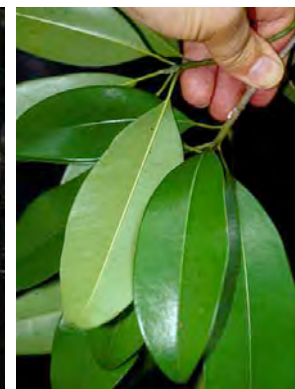
315 SAPINDACEAE  
*Talisia princeps*



316 *Star apple* SAPOTACEAE  
*Chrysophyllum cainito*



317 *Sapadilla* SAPOTACEAE  
*Manilkara zapota*



318 *Sapadilla* SAPOTACEAE  
*Manilkara zapota*



319 SAPOTACEAE  
*Pouteria campechiana*



320 SAPOTACEAE  
*Pouteria reticulata*



# Tropical Forest of the South Autonomous Atlantic Region TREES and SHRUBS of the RAAS, Nicaragua

WEB VERSION

Ray Garth, Robin Foster, Iñigo de la Cerda, John Vandermeer

Photos by: R. B. Foster, Iñigo de la Cerda, & J. Vandermeer. Produced by: R. B. Foster, T. Theim, H. Betz, M. R. Metz, with support from the Andrew Mellon Foundation.  
© Univ. of Michigan; Environmental & Conservation Programs, The Field Museum, Chicago, IL 60605 USA. [RRC@fmnh.org] Rapid Color Guide # 74 version 1.2



321 SAPOTACEAE  
*Pouteria reticulata*



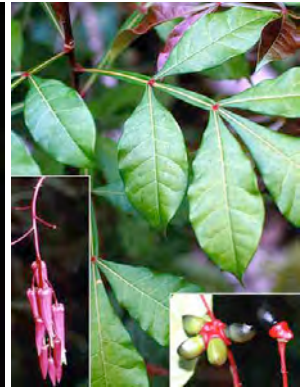
322 *Mami* SAPOTACEAE  
*Pouteria*



323 *Mami* SAPOTACEAE  
*Pouteria*



324 SAPOTACEAE  
*Pouteria*



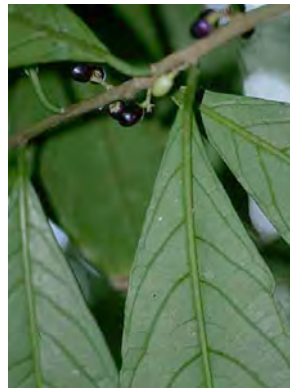
325 *Bitter wood* SIMAROUBACEAE  
*Quassia amara*



326 *School* SIMAROUBACEAE  
*Simarouba amara*



327 *School* SIMAROUBACEAE  
*Simarouba amara*



328 *Guana food* SOLANACEAE  
*Cestrum megalophyllum*



329 *Savanna tomatoes* SOLANACEAE  
*Solanum*



330 SOLANACEAE  
*Solanum*



331 *Plate leaf* SOLANACEAE  
*Solanum*



332 SOLANACEAE



333 STAPHYLEACEAE  
*Turpinia occidentalis*



334 SYMPLOCACEAE  
*Symplocos*



335 *Monkey comb* TILIACEAE  
*Apeiba membranacea*



336 *Wasimo* TILIACEAE  
*Luehea seemanii*



337 *Wasimo* TILIACEAE  
*Luehea seemanii*



338 *Wasimo* TILIACEAE  
*Luehea seemanii*



339 TILIACEAE  
*Trichospermum galeottii*



340 ULMACEAE  
*Ampelocera macrocarpa*

## Tropical Forest of the South Autonomous Atlantic Region TREES and SHRUBS of the RAAS, Nicaragua

WEB VERSION

Ray Garth, Robin Foster, Iñigo de la Cerda, John Vandermeer

Photos by: R. B. Foster, Iñigo de la Cerda, & J. Vandermeer. Produced by: R. B. Foster, T. Theim, H. Betz, M. R. Metz, with support from the Andrew Mellon Foundation.  
© Univ. of Michigan; Environmental & Conservation Programs, The Field Museum, Chicago, IL 60605 USA. [RRC@fmnh.org] Rapid Color Guide # 74 version 1.2



341 ULMACEAE  
*Celtis schippii*



342 *Sany* ULMACEAE  
*Trema micrantha*



343 *Sany* ULMACEAE  
*Trema micrantha*



344 VERBENACEAE  
*Callicarpa acuminata*



345 VERBENACEAE  
*Callicarpa acuminata*



346 VERBENACEAE  
*Citharexylum*



347 VERBENACEAE  
*Lantana trifolia*



348 *Teek* VERBENACEAE  
*Tectona grandis*



349 *Binbayan* VERBENACEAE  
*Vitex cooperi*



350 *Binbayan* VERBENACEAE  
*Vitex cooperi*



351 VIOLACEAE  
*Rinorea squamata*



352 *Bone tree* VIOLACEAE  
*Rinorea squamata*



353 *Areno* VOCHYSIACEAE  
*Qualea paraensis*



354 *May pole* VOCHYSIACEAE  
*Vochysia ferruginea*



355 *May pole* VOCHYSIACEAE  
*Vochysia ferruginea*



356 *May pole* VOCHYSIACEAE  
*Vochysia ferruginea*



357 *Yamari* VOCHYSIACEAE  
*Vochysia hondurensis*



358 ?



359 ?



360 ?